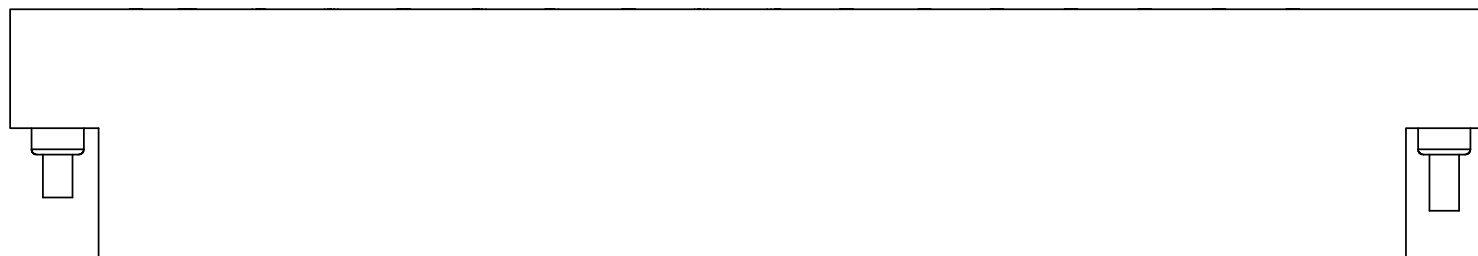
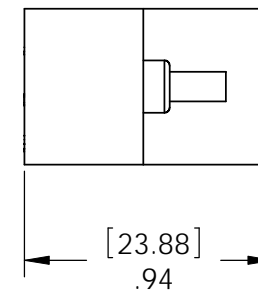
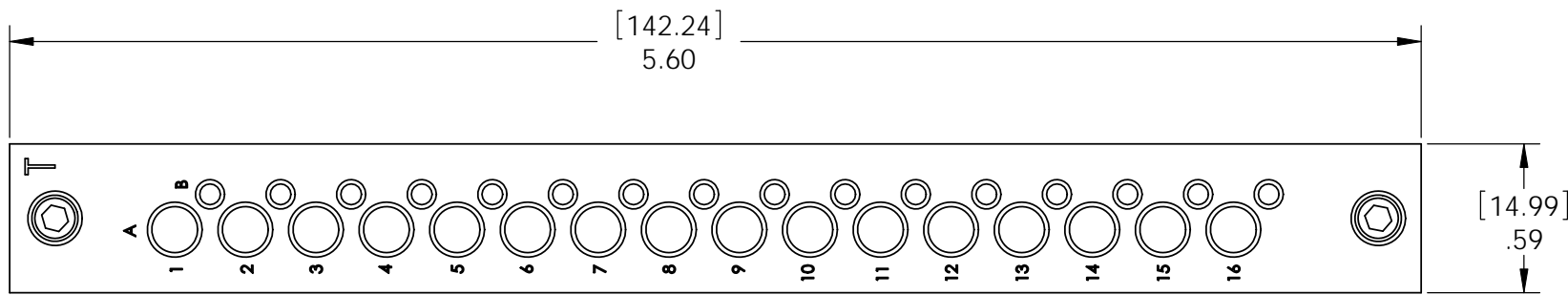
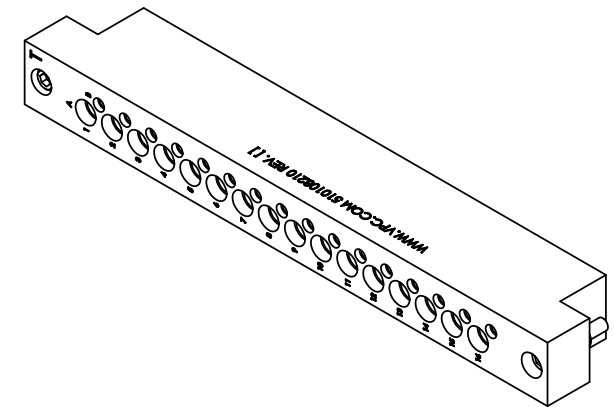


DO NOT SCALE DRAWING

THE INFORMATION CONTAINED HEREIN IS THE EXCLUSIVE PROPERTY OF VIRGINIA PANEL CORP. AND IS SUBMITTED FOR USE BY THE CUSTOMER ONLY. THE DATA SHALL NOT BE DUPLICATED, USED, OR DISCLOSED IN WHOLE OR IN PART FOR ANY PURPOSE OTHER THAN TO MAINTAIN THE EQUIPMENT PROVIDED. CONSULT WITH VIRGINIA PANEL CORPORATION ENGINEERING IF MORE DETAIL IS REQUIRED.

REVISIONS				
ZONE	REV	DESCRIPTION	DATE	APPROVED
	D	ECN # 07-510-0097	5/15/07	DMA



- 2 MATING RECEIVER MODULE VPC PART # 510 104 243
 1 FOR APPLICATION, USE & CARE INFORMATION
 CONSULT VPC USERS GUIDE @WWW.VPC.COM

NOTES:

CUSTOMER DRAWING - CUSTOMER DRAWING									
SOLIDWORKS DRAWING FILE	DIMENSIONS ARE SHOWN AS:		SIGNATURES		DATE	VIRGINIA PANEL CORPORATION WWW.VPC.COM			
	[millimeters] [INCHES]		DR	R.GARMAN	9/26/97				
	REMOVE BURRS. BREAK SHARP EDGES		CHK			TRIPADDLE SIGNAL/MINI COAXIAL MODULE ITA, 16/16 POSITION			
	MATERIAL		ENG						
	FINISH		PROD			SIZE	CAGE CODE	DWG. NO.	REV
		ASSY			C	18117	510108210	D	
		APPD			SCALE: NONE	9/26/97	510108210	SHEET	1 OF 1