

4

3

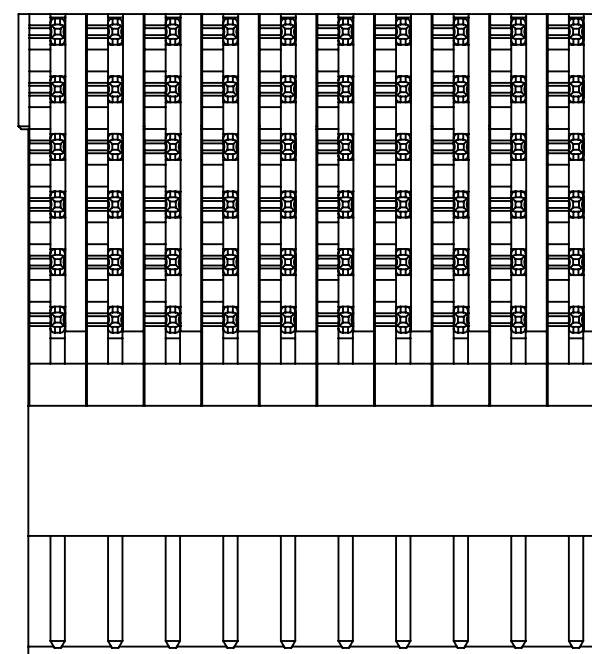
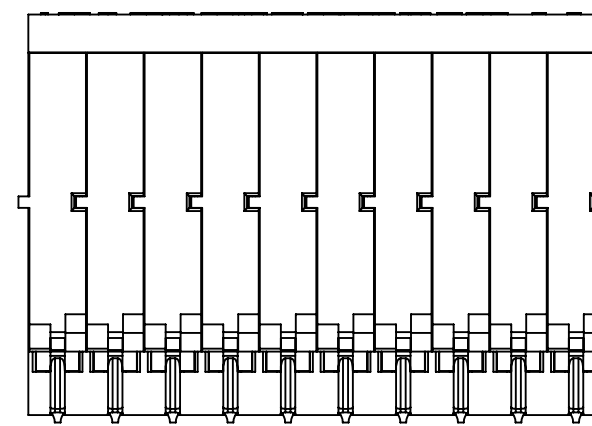
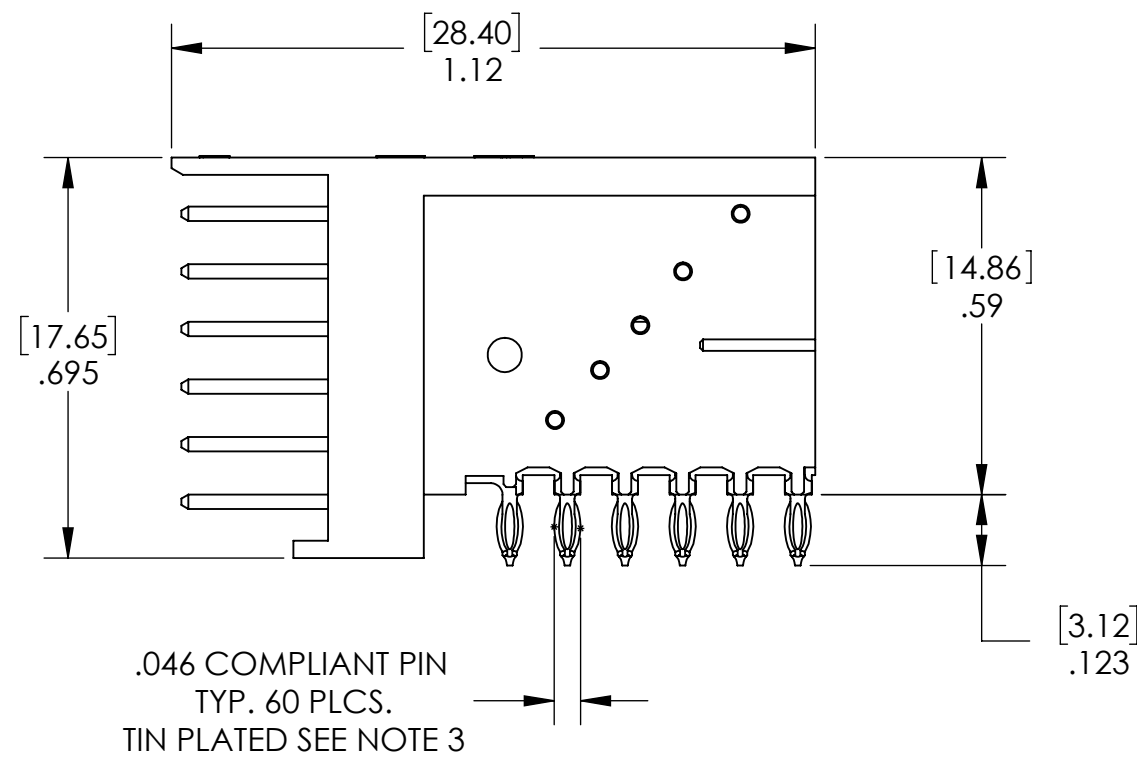
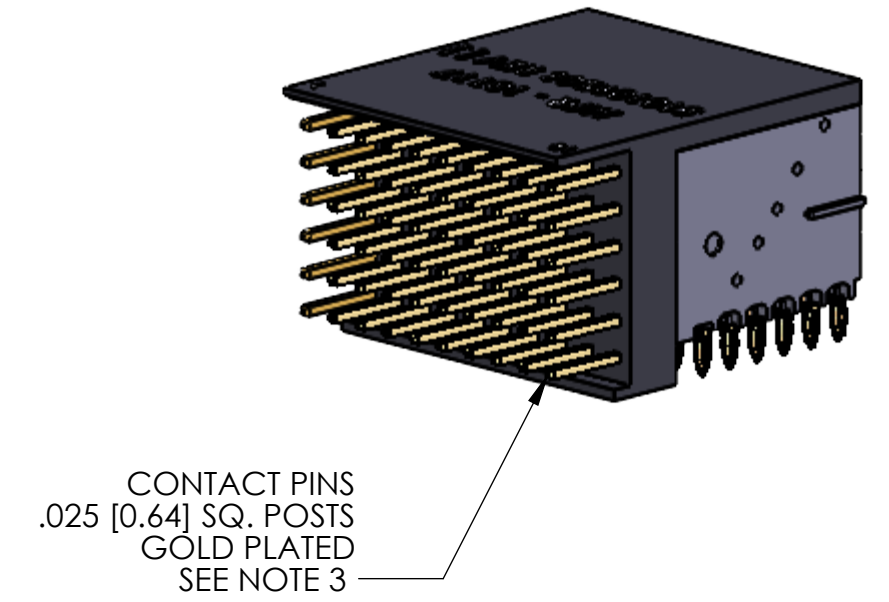
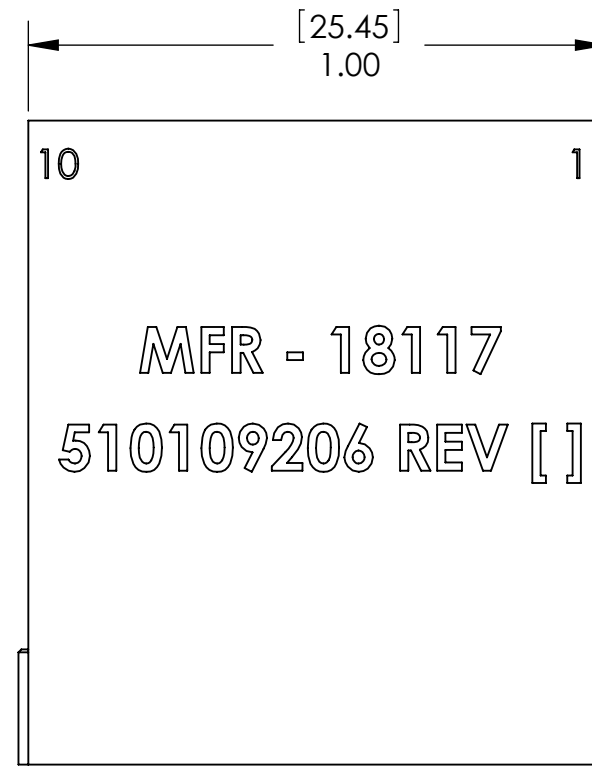
2

1

DO NOT SCALE DRAWING

THE INFORMATION CONTAINED HEREIN IS THE EXCLUSIVE PROPERTY OF VPC AND IS PERMITTED FOR USE BY THE CUSTOMER ONLY. THE DATA SHALL NOT BE DUPLICATED, USED, OR DISCLOSED IN WHOLE OR IN PART FOR ANY PURPOSE OTHER THAN TO MAINTAIN THE EQUIPMENT PROVIDED. CONSULT WITH VPC ENGINEERING IF MORE DETAIL IS REQUIRED.

REVISIONS			
REV	DESCRIPTION	DATE	ENGR
C	ECN #13042	12/28/22	J HARDIGREE



- NOTES:
- 1. FOR MORE INFORMATION, VISIT VPC.COM.
 - 2. BAG (1) M2 X 8 PAN HEAD PHILLIPS SCREW TO BE INCLUDED WITH HEADER
 - 3. HEADER CONTACT PINS PLATED 30 MIN. MICROINCHES OF GOLD OVER 100 MIN. MICROINCHES OF NICKEL. THE COMPLIANT PINS PLATED 100-200 MICROINCHES OF TIN OVER 50 MIN. MICROINCHES OF NICKEL
 - 4. CONTINUOUS MAX. CARRY CURRENT 5 AMPS
 - 5. SEE SHEET 2 FOR NOTE.
 - 6. SEE SHEET 2 FOR NOTE.

CUSTOMER DRAWING			
VIRGINIA PANEL CORPORATION WWW.VPC.COM			
HEADER, i2 MCR iCON, RCVR, 60 PIN, FOR PCB MOUNTING			
DIMENSIONS ARE SHOWN AS:	SIZE	CAGE CODE	DWG. NO.
[MILLIMETERS] INCHES	C	18117	510109206
	SCALE: NONE	510109206	7/12/11 SHEET 1 OF 2

4

3

2

1

D

C

B

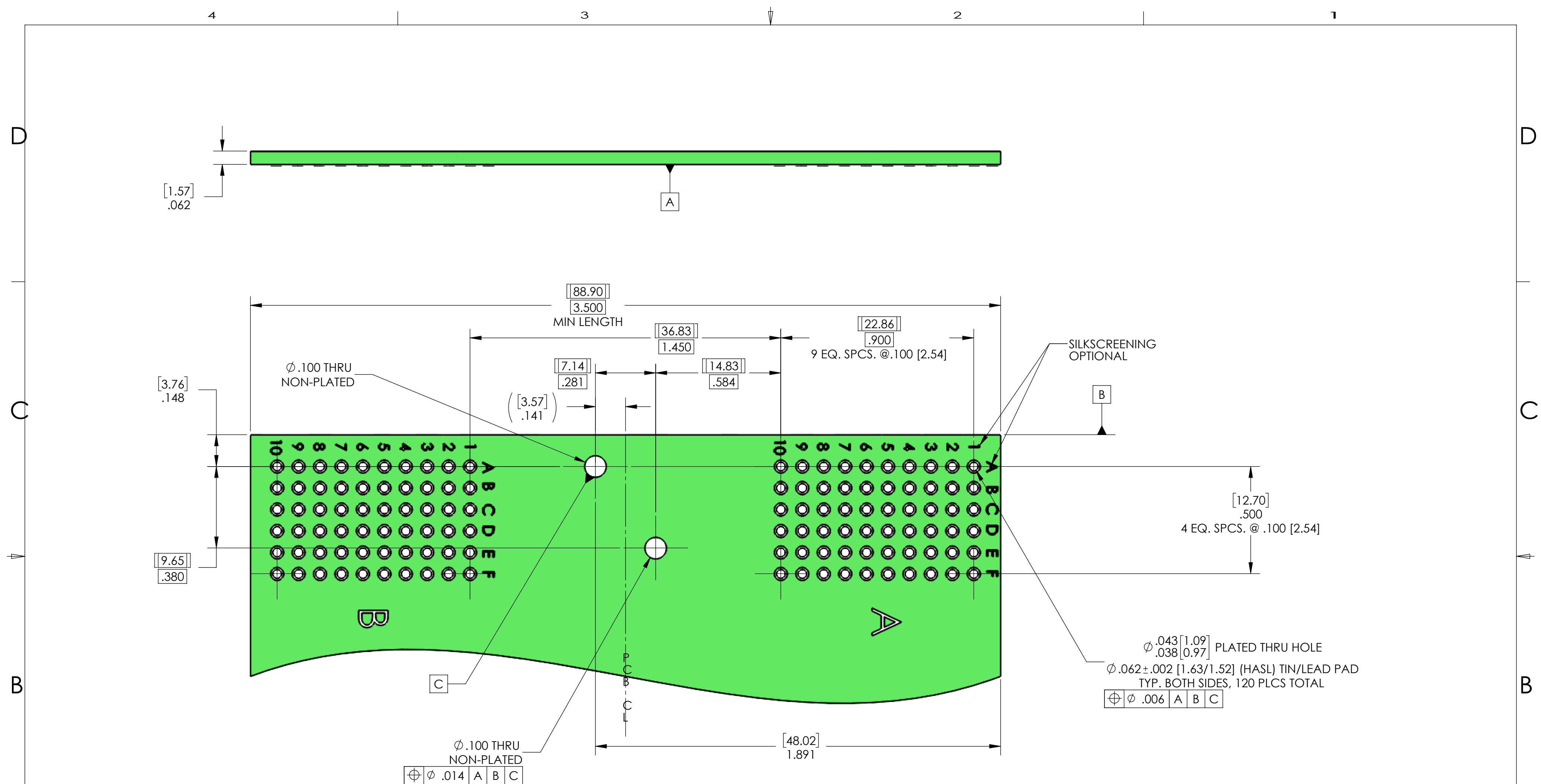
A

D

C

B

A



**PCB LAYOUT FOR
310130104 RECEIVER
COMPONENT SIDE SHOWN**

6. RECOMMENDED PCB LAYOUT
CONNECTOR MOUNTS THIS SIDE
BOARD THICKNESS = [1.57] .062 OR [2.29] .090
DIMENSION TOLERANCE = ±.[.13].005 UNLESS OTHERWISE SPECIFIED

5. FOR MORE INFORMATION, VISIT VPC.COM.

NOTES:

DO NOT SCALE DRAWING

CUSTOMER DRAWING - CUSTOMER DRAWING - CUSTOMER DRAWING

THE INFORMATION CONTAINED HEREIN IS THE EXCLUSIVE PROPERTY OF VPC AND IS PERMITTED FOR USE BY THE CUSTOMER ONLY. THE DATA SHALL NOT BE DUPLICATED, USED, OR DISCLOSED IN WHOLE OR IN PART FOR ANY PURPOSE OTHER THAN TO MAINTAIN THE EQUIPMENT PROVIDED.

SIZE C	CAGE CODE 18117	DWG.NO. 510109206	REV C
SCALE:NONE		510109206	SHEET 2 OF 2