

4

3

2

1

DO NOT SCALE DRAWING

THE INFORMATION CONTAINED HEREIN IS THE EXCLUSIVE PROPERTY OF VIRGINIA PANEL CORPORATION AND IS SUBMITTED FOR USE BY THE CUSTOMER ONLY. THE DATA SHALL NOT BE DUPLICATED, USED, OR DISCLOSED IN WHOLE OR IN PART FOR ANY PURPOSE OTHER THAN TO MAINTAIN THE EQUIPMENT PROVIDED. CONSULT WITH VIRGINIA PANEL CORPORATION ENGINEERING IF MORE DETAIL IS REQUIRED.

| REVISIONS | | | |
|-----------|-------------|---------|-------------|
| REV | DESCRIPTION | DATE | ENGR |
| K | ECN #4618 | 5/10/13 | L LOCKRIDGE |

D

D

C

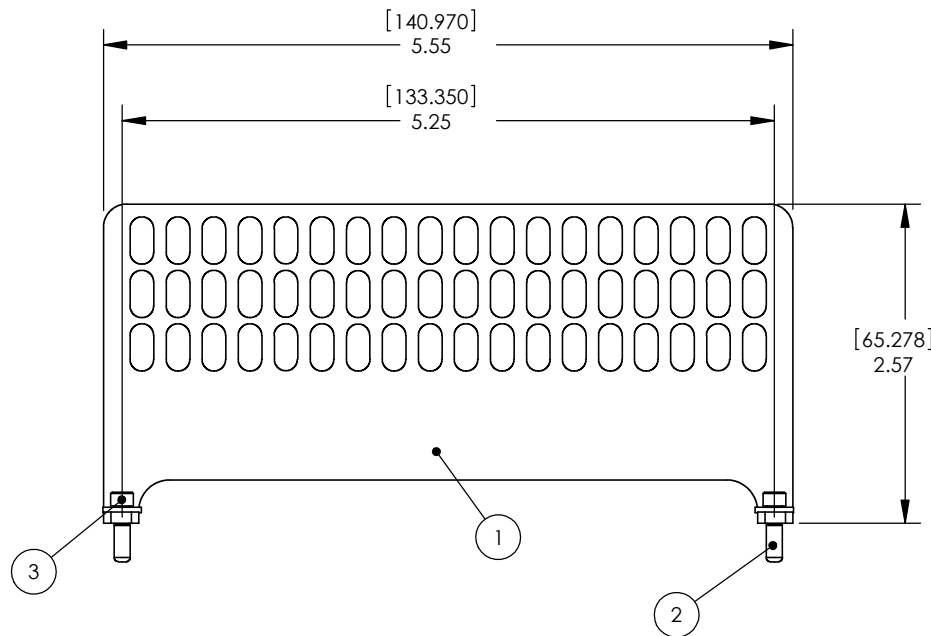
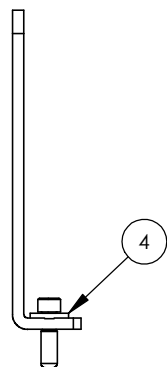
C

B

B

A

A



| 7 | 6 | CBL TIE 6" CLR MS3367-5-9! |
|----------|------|-------------------------------|
| 6 | 2 | NT HX 4-40 SST ! |
| 5 | 2 | SCR SH CP 4-40 1.00 SST ! |
| 4 | 2 | WSH FL #4 92141A005 ! |
| 3 | 2 | SCR SH CP 4-40 .250 SST ! |
| 2 | 2 | CAP VC .08 X .25 LG VNL RED ! |
| 1 | 1 | MOD AC STRN RLF 90SRS CL CMAT |
| ITEM NO. | QTY. | DESCRIPTION |

3 ADDITIONAL MOUNTING SCREWS SHIPPED WITH EACH MODULE SEPARATELY.

2 ITEMS 5, 6 & 7 SHIPPED LOOSE IN SEPERATE BAG.

1. FOR APPLICATION USE & CARE INFORMATION CONSULT VPC USERS GUIDE @WWW.VPC.COM
NOTES:

RELATIVE CONNECTOR POSITIONS AND WIRE ROUTING ARE GENERIC AND MAY VARY WITH PRODUCT
DIMENSIONS ARE SHOWN AS:
[MILLIMETERS]
INCHES

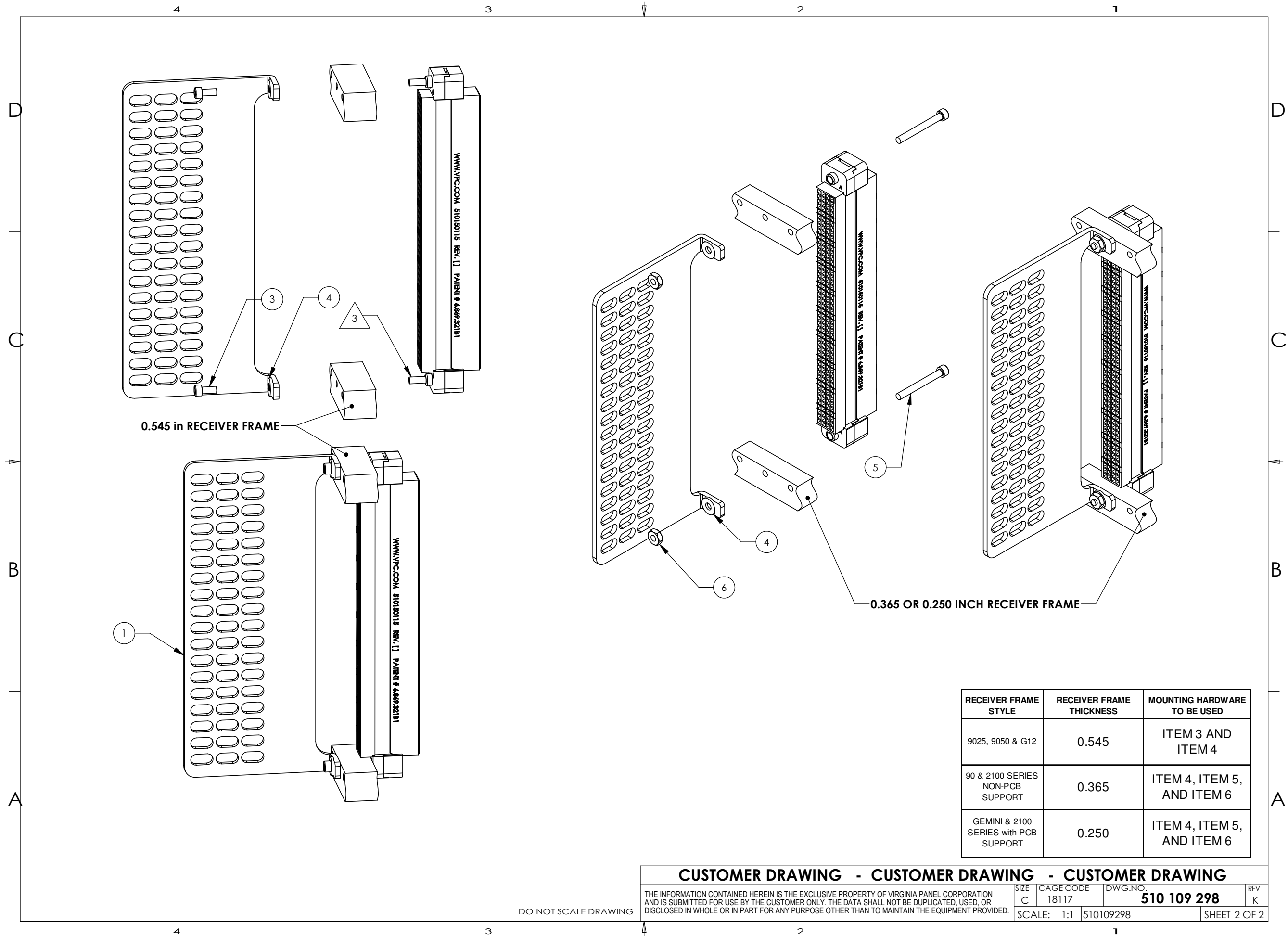
| CUSTOMER DRAWING | | | |
|-------------------------------------|-----------|-------------|--------------|
| VIRGINIA PANEL CORPORATION | | | |
| WWW.VPC.COM | | | |
| STRAIN RELIEF PLATE 90SRS RCVR MOD. | | | |
| SIZE | CAGE CODE | DWG. NO. | REV |
| C | 18117 | 510 109 298 | K |
| SCALE: | 510109298 | 12/12/01 | SHEET 1 OF 2 |

4

3

2

1



0.545 in RECEIVER FRAME

0.365 OR 0.250 INCH RECEIVER FRAME

| RECEIVER FRAME STYLE | RECEIVER FRAME THICKNESS | MOUNTING HARDWARE TO BE USED |
|---------------------------------------|--------------------------|------------------------------|
| 9025, 9050 & G12 | 0.545 | ITEM 3 AND ITEM 4 |
| 90 & 2100 SERIES NON-PCB SUPPORT | 0.365 | ITEM 4, ITEM 5, AND ITEM 6 |
| GEMINI & 2100 SERIES with PCB SUPPORT | 0.250 | ITEM 4, ITEM 5, AND ITEM 6 |

CUSTOMER DRAWING - CUSTOMER DRAWING - CUSTOMER DRAWING

THE INFORMATION CONTAINED HEREIN IS THE EXCLUSIVE PROPERTY OF VIRGINIA PANEL CORPORATION AND IS SUBMITTED FOR USE BY THE CUSTOMER ONLY. THE DATA SHALL NOT BE DUPLICATED, USED, OR DISCLOSED IN WHOLE OR IN PART FOR ANY PURPOSE OTHER THAN TO MAINTAIN THE EQUIPMENT PROVIDED.

| | | | |
|------------|--------------------|-------------------------------|--------------|
| SIZE C | CAGE CODE 18117 | DWG.NO. 510 109 298 | REV K |
| SCALE: 1:1 | | 510109298 | SHEET 2 OF 2 |

DO NOT SCALE DRAWING