

4

3

2

1

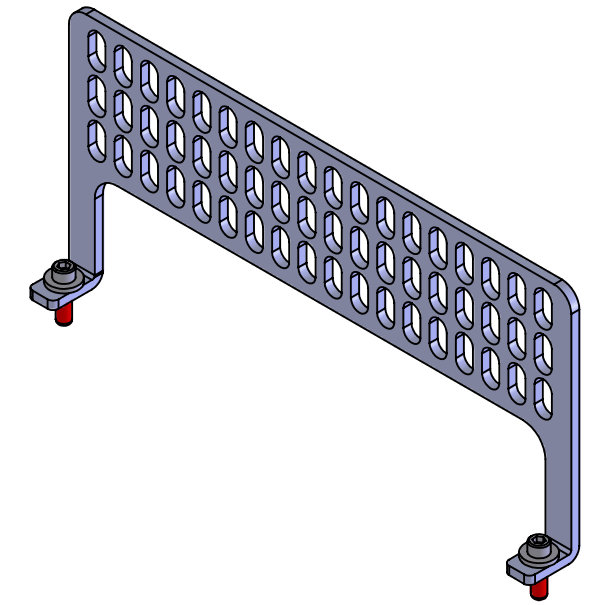
DO NOT SCALE DRAWING

THE INFORMATION CONTAINED HEREIN IS THE EXCLUSIVE PROPERTY OF VIRGINIA PANEL CORPORATION AND IS SUBMITTED FOR USE BY THE CUSTOMER ONLY. THE DATA SHALL NOT BE DUPLICATED, USED, OR DISCLOSED IN WHOLE OR IN PART FOR ANY PURPOSE OTHER THAN TO MAINTAIN THE EQUIPMENT PROVIDED. CONSULT WITH VIRGINIA PANEL CORPORATION ENGINEERING IF MORE DETAIL IS REQUIRED.

REVISIONS			
REV	DESCRIPTION	DATE	ENGR
B	ECN #3539	9/20/11	R HERRON

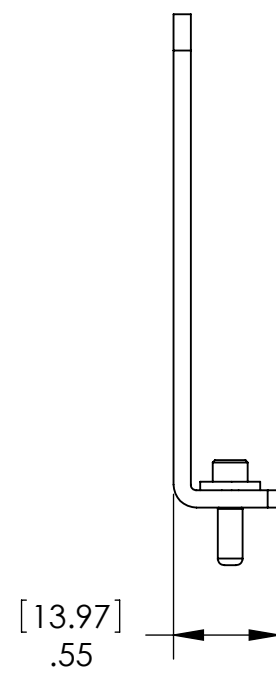
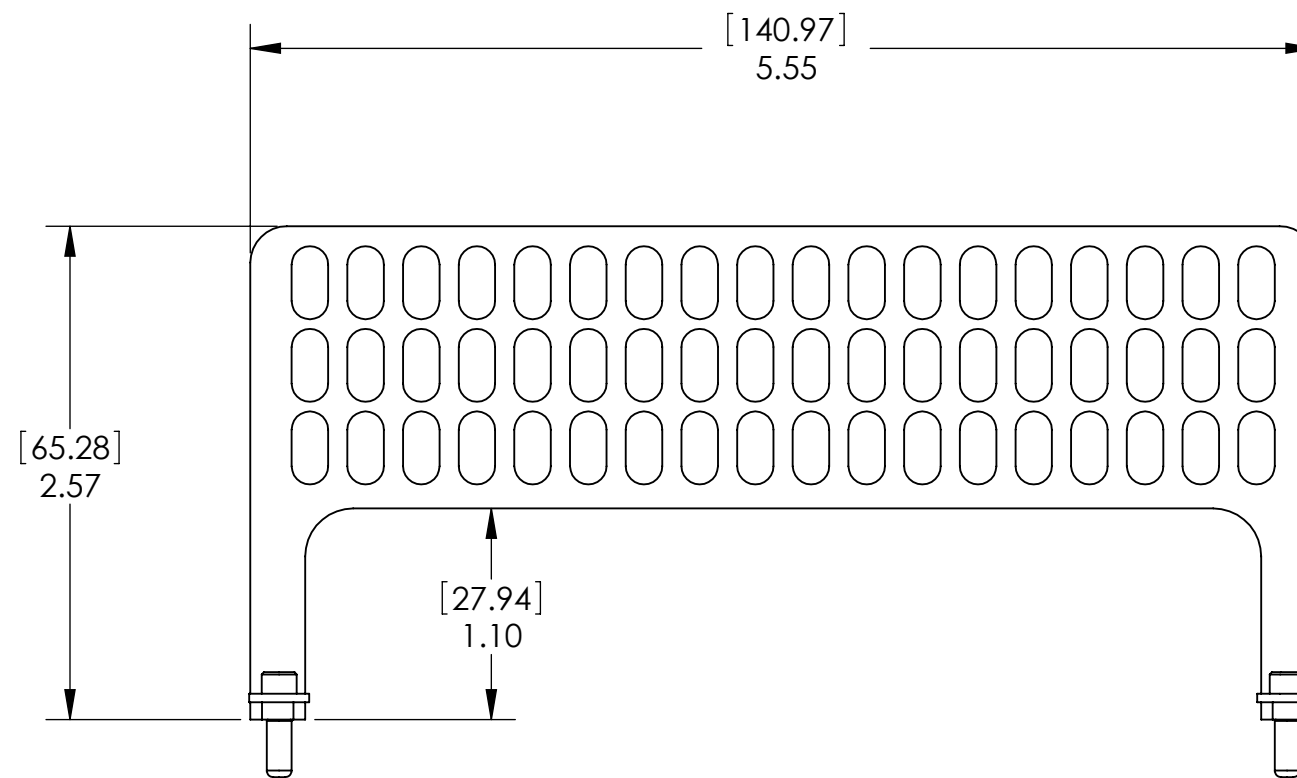
D

D



C

C



B

B



A

A

3. STRAIN RELIEF PLATE INCLUDES (6) 4" WIRE TIES.

2. STRAIN RELIEF PLATE INCLUDES MOUNTING HARDWARE:

- (2) 4-40 X .25" SOCKET HEAD CAP SCREWS
- (2) 4-40 X 1.00" SOCKET HEAD CAP SCREWS
- (2) #4 WASHERS
- (2) #4 HEX NUTS

SEE PAGE TWO FOR DETAILS ABOUT WHICH SCREWS DIFFERENT APPLICATIONS REQUIRE.

1. FOR APPLICATION USE & CARE INFORMATION CONSULT VPC USERS GUIDE @WWW.VPC.COM

NOTES:

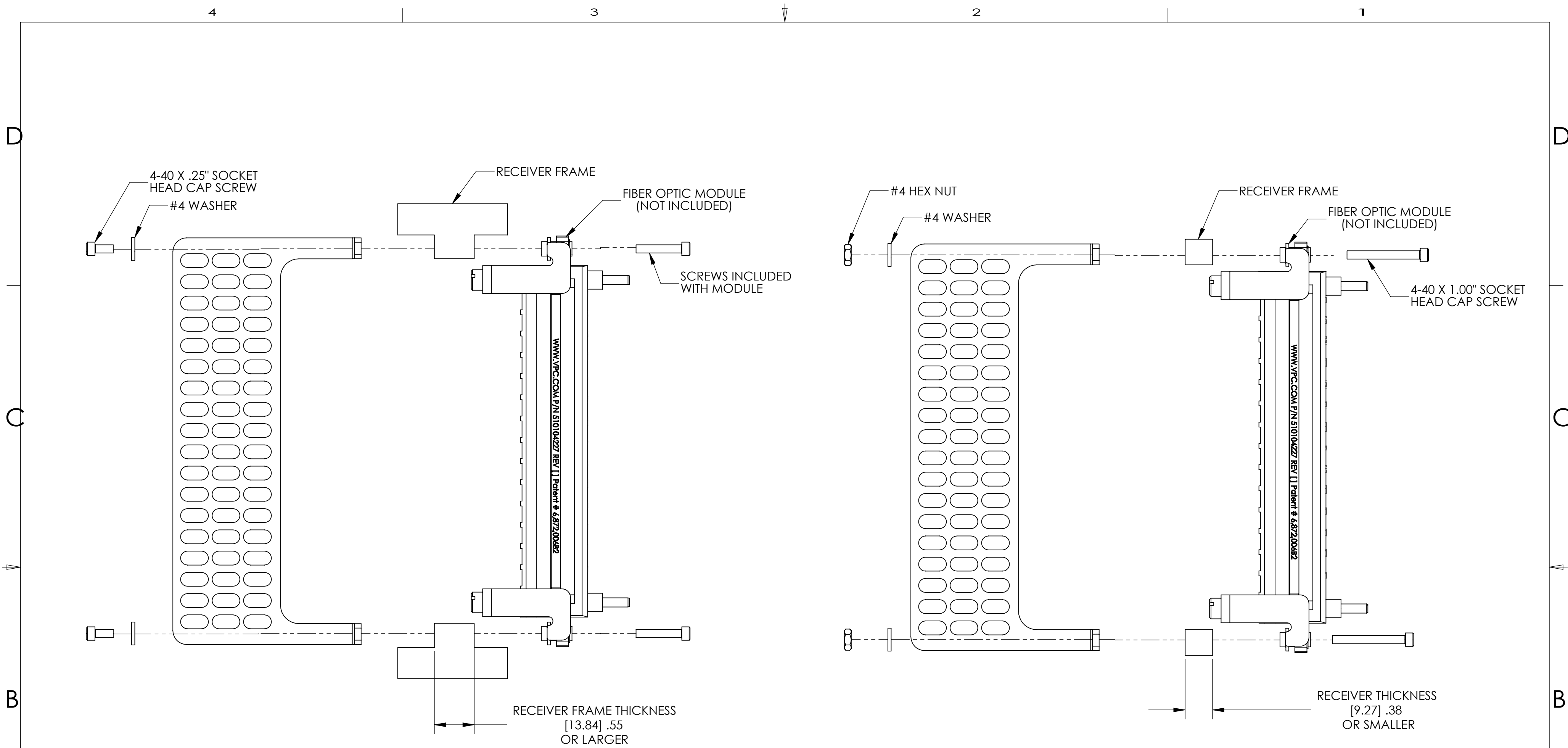
CUSTOMER DRAWING			
VIRGINIA PANEL CORPORATION WWW.VPC.COM			
STRAIN RELIEF PLATE 90 SRS FIB OPT			
DIMENSIONS ARE SHOWN AS:	SIZE	CAGE CODE	DWG. NO.
[MILLIMETERS]	C	18117	510109311
INCHES			REV B
SCALE: 1:1		510109311	5/19/09 SHEET 1 OF 2

4

3

2

1



MOUNTING METHOD 1

MOUNTING METHOD 2

RECEIVER FRAME STYLE	RECEIVER FRAME THICKNESS	STRAIN RELIEF MOUNTING METHOD
9025, 9050, 9075, S6, G12 & G12X	[13.84] .55	1
SMALL 90 SERIES (3, 6, 10) G2, G6, G10 & G18 (NON-PCB)	[9.27] .37	2
G10 (PCB) & G18 (PCB)	[6.35] .25	2

CUSTOMER DRAWING - CUSTOMER DRAWING - CUSTOMER DRAWING

THE INFORMATION CONTAINED HEREIN IS THE EXCLUSIVE PROPERTY OF VIRGINIA PANEL CORPORATION AND IS SUBMITTED FOR USE BY THE CUSTOMER ONLY. THE DATA SHALL NOT BE DUPLICATED, USED, OR DISCLOSED IN WHOLE OR IN PART FOR ANY PURPOSE OTHER THAN TO MAINTAIN THE EQUIPMENT PROVIDED.

SIZE C	CAGE CODE 18117	DWG.NO. 510109311	REV B
SCALE: 1:1		510109311	5/19/09 SHEET 2 OF 2

DO NOT SCALE DRAWING