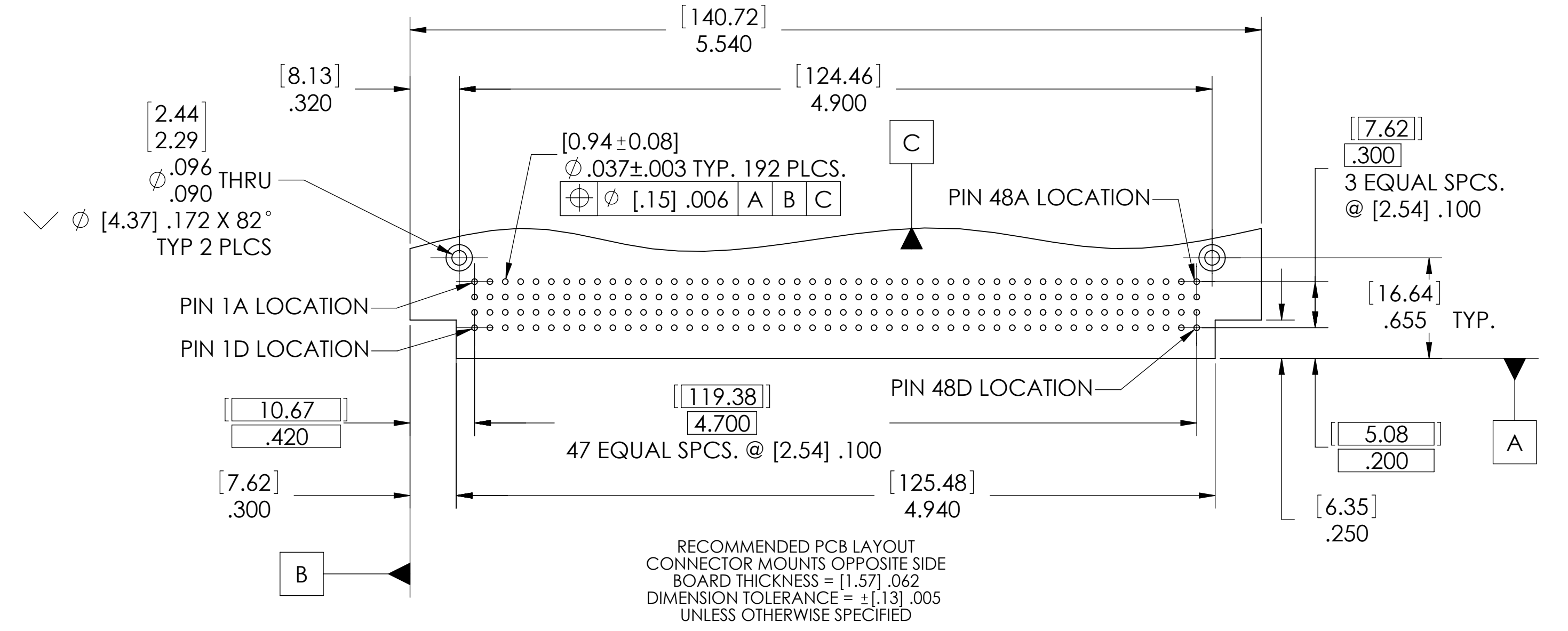
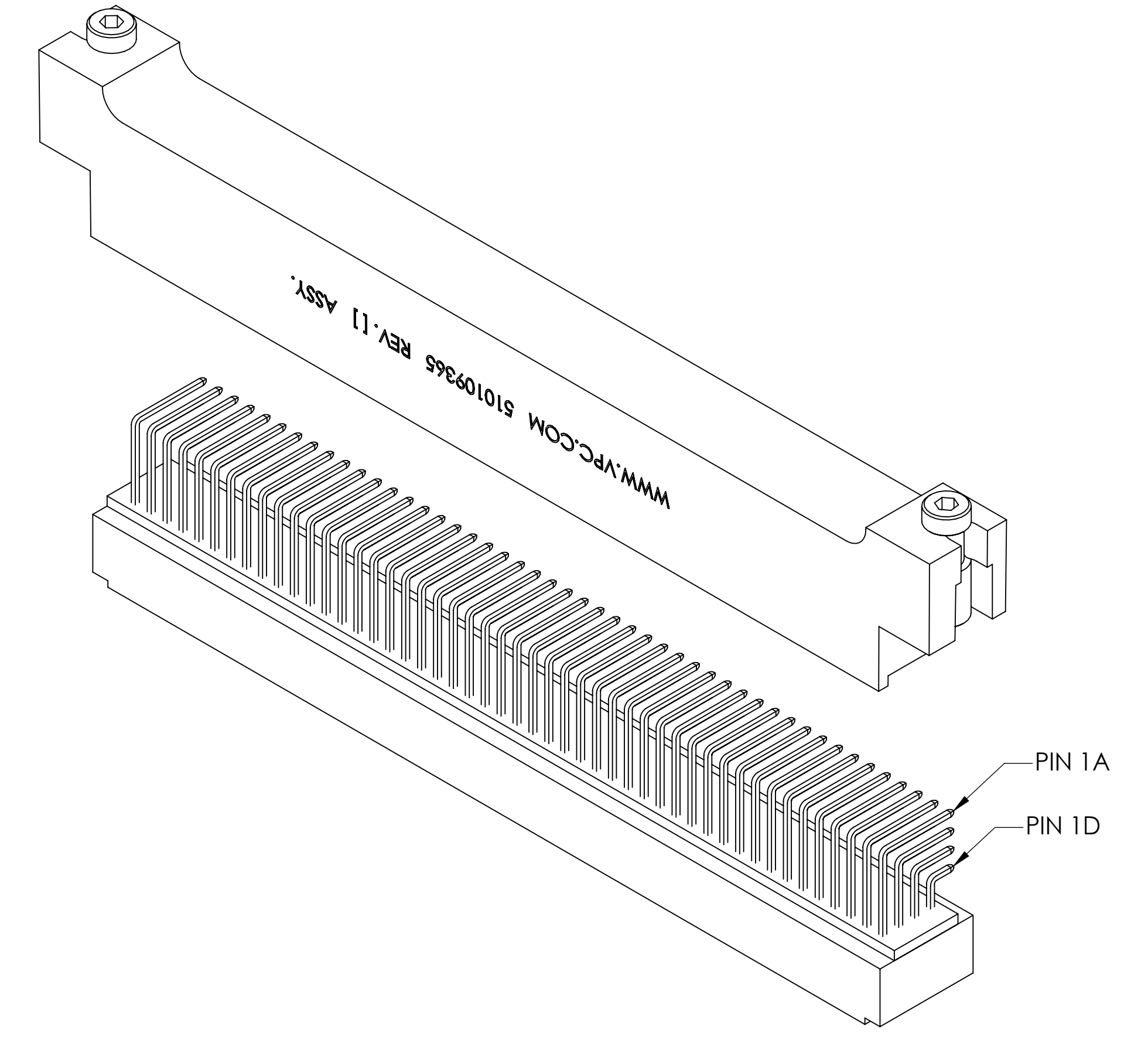
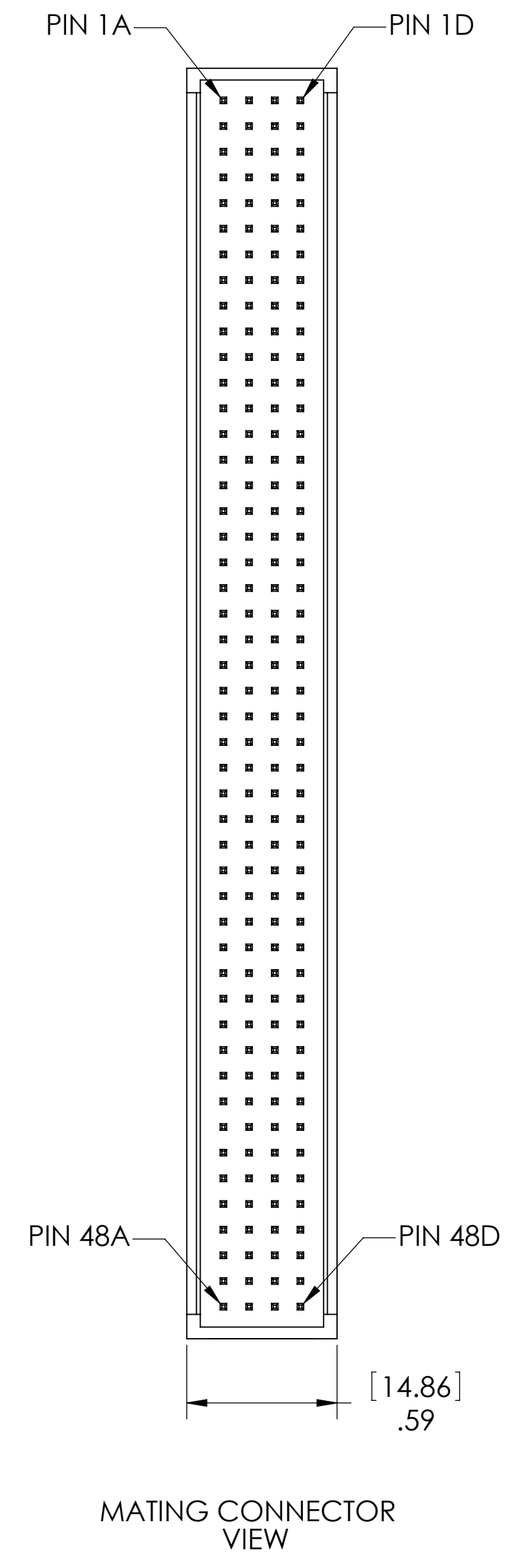
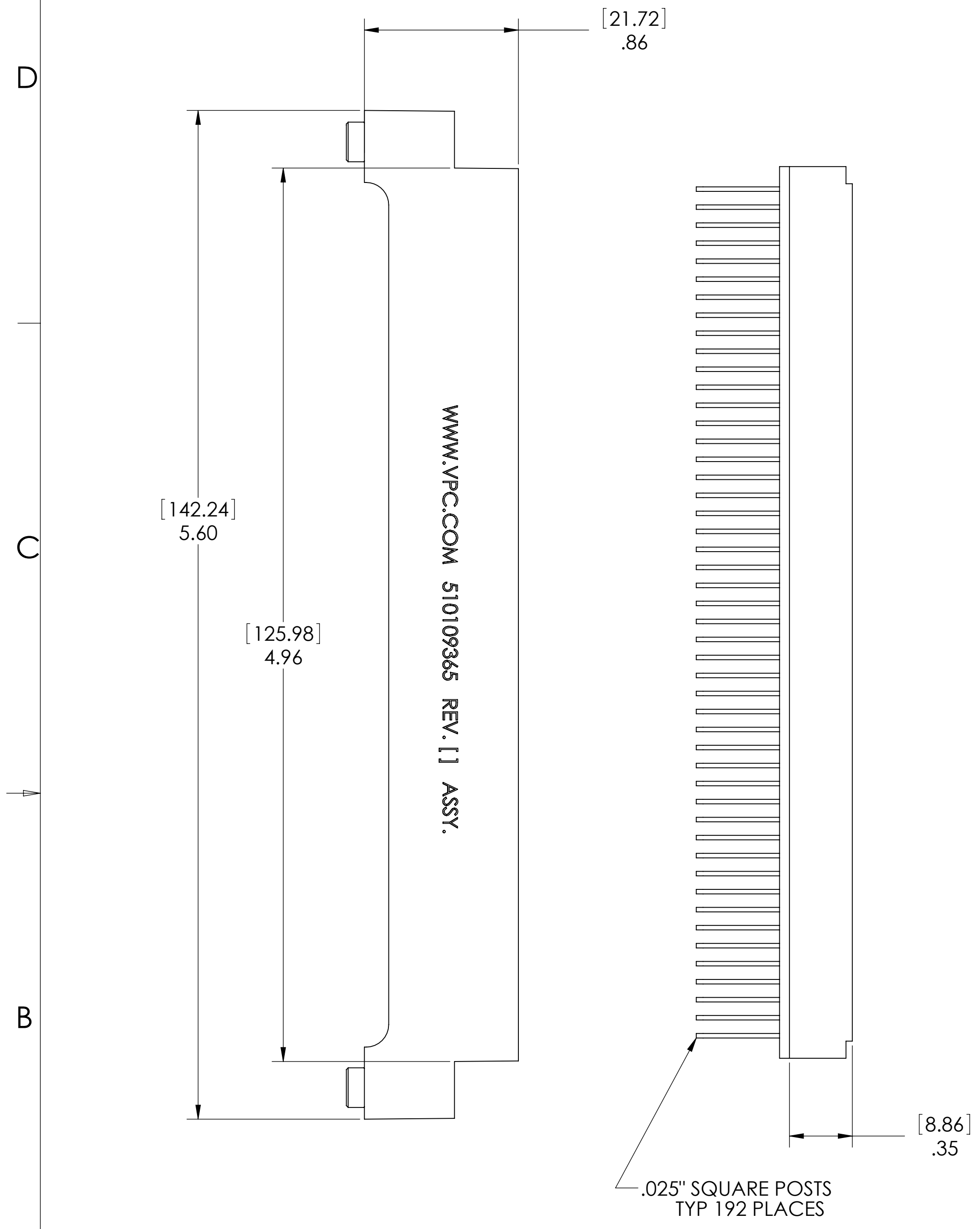


8 7 6 5 4 3 2 1

DO NOT SCALE DRAWING

THE INFORMATION CONTAINED HEREIN IS THE EXCLUSIVE PROPERTY OF VIRGINIA PANEL CORPORATION AND IS SUBMITTED FOR USE BY THE CUSTOMER ONLY. THE DATA SHALL NOT BE DUPLICATED, USED, OR DISCLOSED IN WHOLE OR IN PART FOR ANY PURPOSE OTHER THAN TO MAINTAIN THE EQUIPMENT PROVIDED. CONSULT WITH VIRGINIA PANEL CORPORATION ENGINEERING IF MORE DETAIL IS REQUIRED.

REVISIONS			
REV	DESCRIPTION	DATE	ENGR
A	DRAWING ORIGINATION - ECN#9247	7/9/19	R HERRON



- 6 USE WITH RECEIVER MODULE 510150130
 5 ALL NECESSARY HARDWARE FOR ASSEMBLY SUPPLIED IN KIT
 4 CUSTOMER PCB MUST BE MANUFACTURED WITH (HEADER) INSTALLATION AREA COMPLYING TO RECOMMENDED PCB LAYOUT
 3 MATERIALS:
 HARDWARE: STAINLESS STEEL SCREWS
 BRASS ALLOY STANDOFFS NI PLATED
 SHROUD: BLACK PEI THERMOPLASTIC
 HEADER - INSULATOR: GLASS FILLED PET BLACK THERMOPLASTIC
 CONTACT: PHOSPHOR BRONZE ALLOY
 CONTACT PLATING IN MATING AREA: .00003 in. Au OVER .00005 in. Ni
 2 FOR DETAILED ASSEMBLY INSTRUCTIONS REFER TO SECTION ABOVE
 1 FOR APPLICATION USE AND CARE INFORMATION CONSULT VPC USERS GUIDE @ WWW.VPC.COM
- NOTES:

CUSTOMER DRAWING			
VIRGINIA PANEL CORPORATION WWW.VPC.COM			
RIGHT ANGLE HEADER / SHROUD KIT F/ iDOCK RECEVR, 192 QUAD-PADDLE W/ CUSTOMER SUPPLIED PCB			
DIMENSIONS ARE SHOWN AS:	SIZE	CAGE CODE	DWG. NO.
[MILLIMETERS]	D	18117	510109365
[INCHES]	SCALE: NONE	510109365	7/8/19 SHEET 1 OF 1

8 7 6 5 4 3 2 1

ASSEMBLY INSTRUCTIONS

1. ASSEMBLE - SOLDER (HEADER - ITEM #3) TO YOUR PCB (RECOMMENDED IPC-A-610 STANDARD) (SEE FIG. 1)
2. FASTEN THE (SHROUD ASM - ITEMS #1 & #2) TO YOUR PCB USING THE 2 (2-56 x .25 FH PHL SCREWS - ITEM #5) (SEE FIG. 2)
3. USING A 3/32" HEX WRENCH REPLACE THE TWO 4-40 RECEIVER MODULE MOUNTING SCREWS WITH THE 2 (4-40 x 1-1/4" SCREWS - ITEM #4) (SEE FIG. 3)
4. ACCESSING THE BACKSIDE OF VPC'S RECEIVER, INSTALL STAND OFFS (SEE FIG. 4)
5. USING A 3/32" HEX WRENCH CAREFULLY INSTALL THE PCB ASSEMBLY ONTO THE BACKSIDE OF VPC'S RECEIVER MODULE ENSURING THAT PIN 1A OF THE MODULE AND PIN 1A OF THE PCB ASSEMBLY COINCIDE. FOR BEST RESULTS ONLY TURN SCREWS 1-1/2 TO 2 TURNS EACH ALTERNATELY UNTIL ASSEMBLY IS COMPLETE. ***DO NOT OVERTIGHTEN*** (SEE FIG. 5)
6. TO UNMATE THE PCB ASSEMBLY FROM THE ITA MODULE USE THE SAME ALTERNATING PATTERN OF 1-1/2 TO 2 TURNS UNTIL PCB ASSEMBLY IS FULLY DISENGAGED

D

D

C

C

B

B

A

A

FIG 1

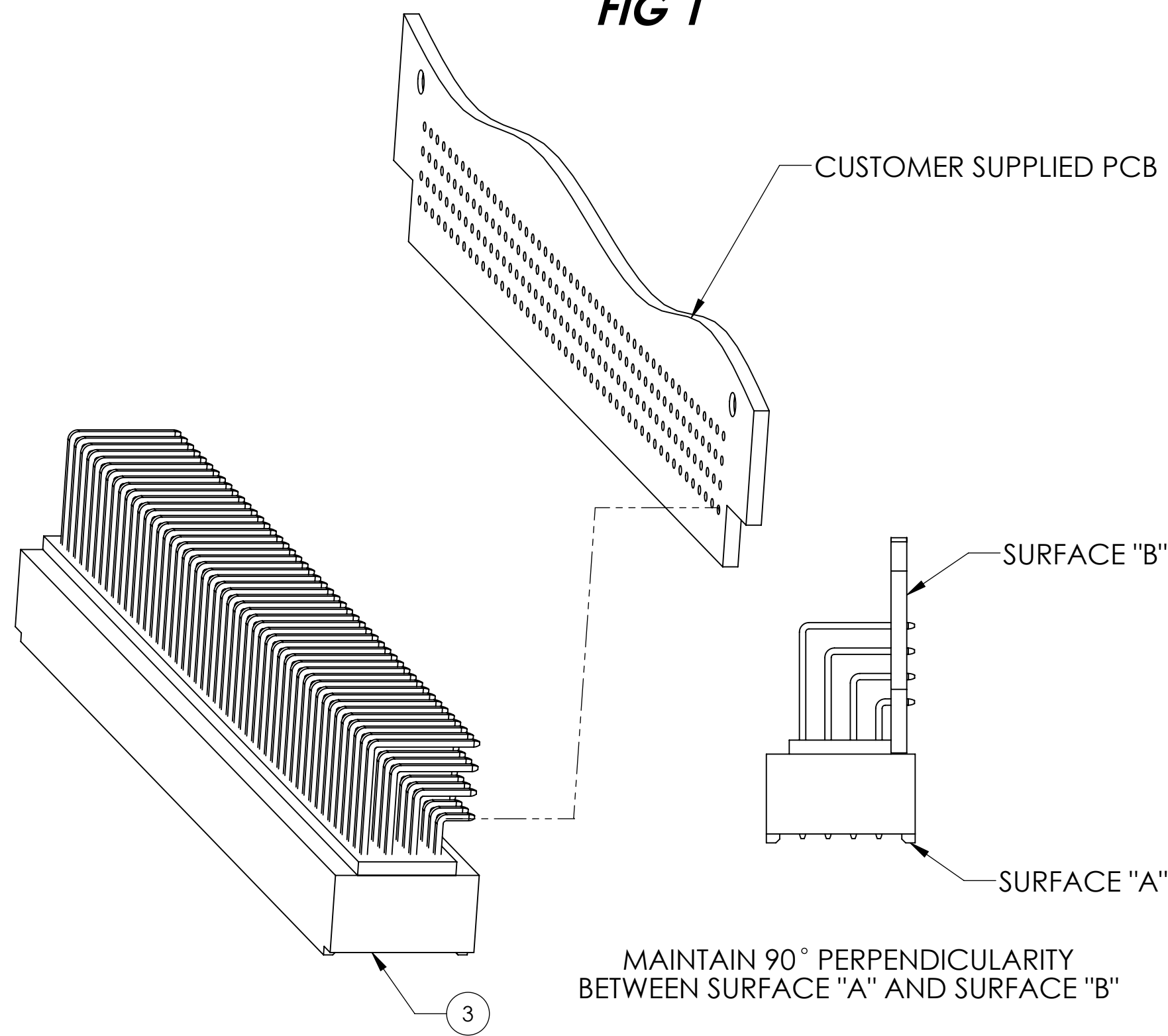


FIG 3

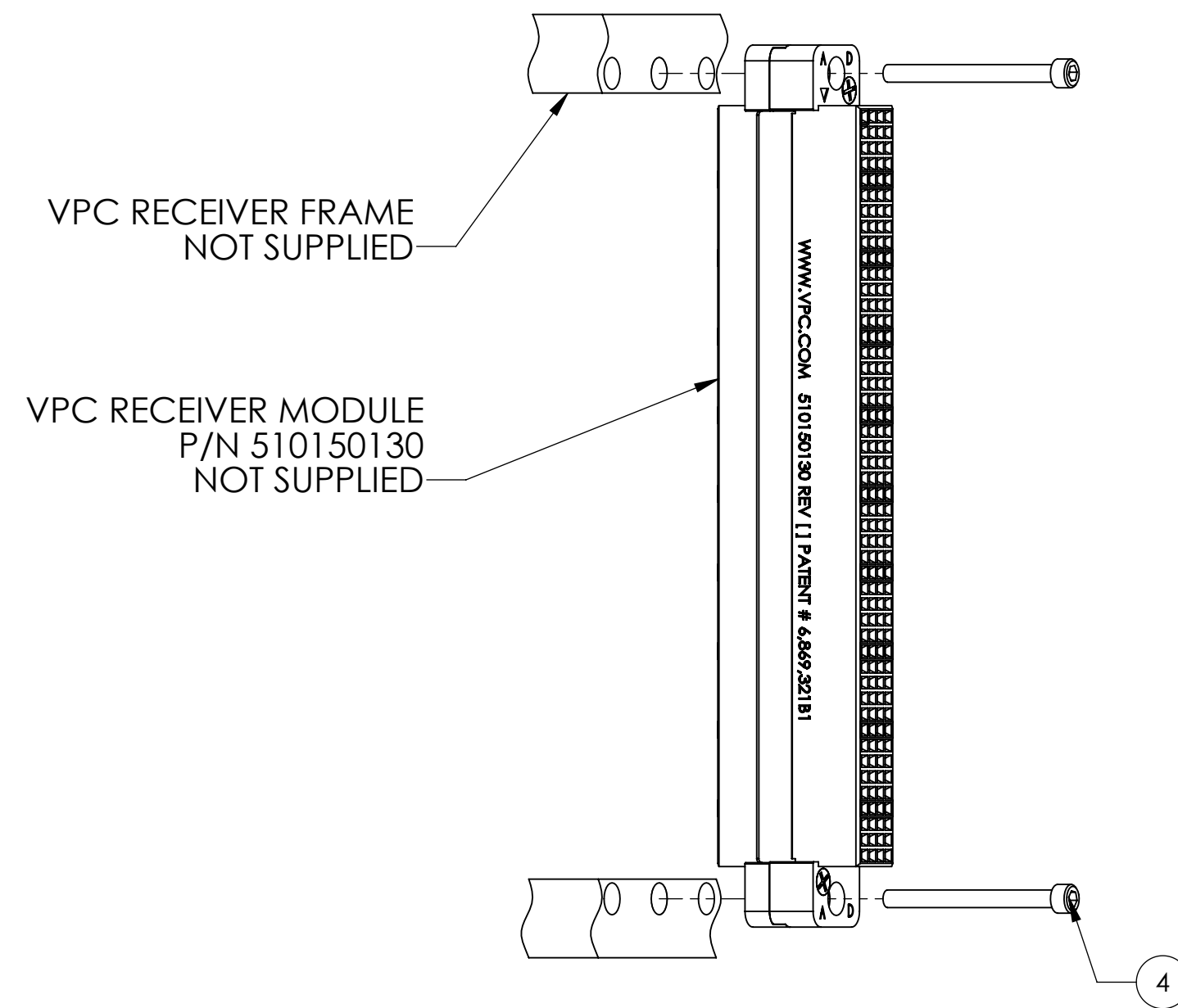


FIG 4

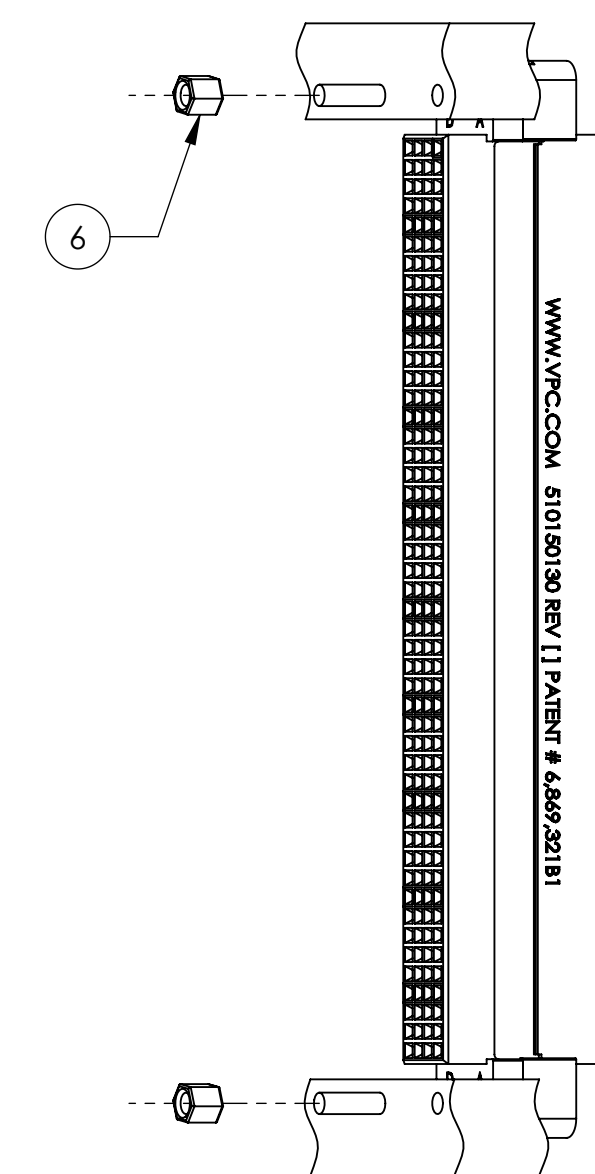


FIG 5

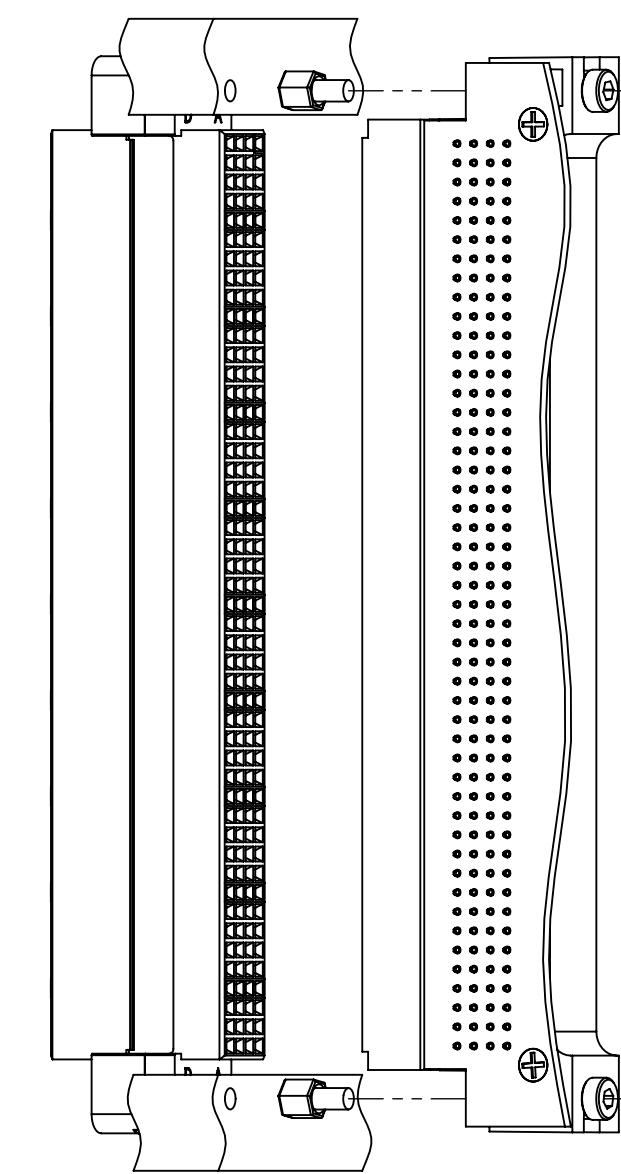
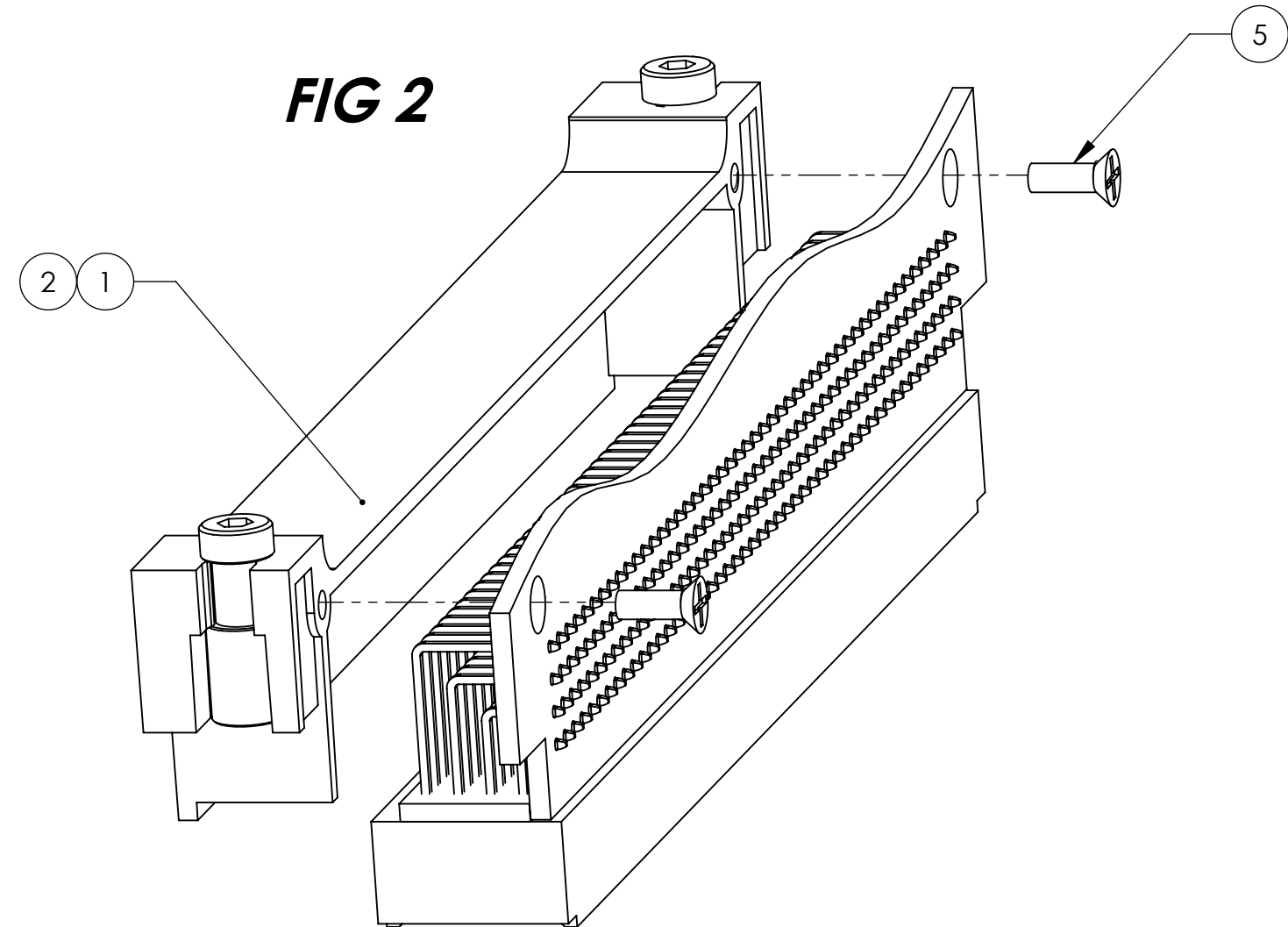


FIG 2



USERS MANUAL SKETCHES

KIT PARTS LIST

ITEM NO.	QTY.	DESCRIPTION
6	2	4-40 x .187 THREADED STAND OFF
5	2	SCR FH PHL 2-56 x .31 SST
4	2	Scr Sh Cp 4-40 x 1.25 SST
3	1	192 PIN RT ANG ML HDR
2	2	SPCL SDR SCR SOCKET HEAD
1	1	NEXT GEN PCB ASM SHROUD

SIZE	CAGE CODE	DWG. NO.	REV
D	18117	510109365	A

SCALE: 1:1 510109365 7/8/19 SHEET 1 OF 1

DO NOT SCALE DRAWING

THE INFORMATION CONTAINED HEREIN IS THE EXCLUSIVE PROPERTY OF VIRGINIA PANEL CORPORATION AND IS SUBMITTED FOR USE BY THE CUSTOMER ONLY. THE DATA SHALL NOT BE DUPLICATED, USED, OR DISCLOSED IN WHOLE OR IN PART FOR ANY PURPOSE OTHER THAN TO MAINTAIN THE EQUIPMENT PROVIDED.