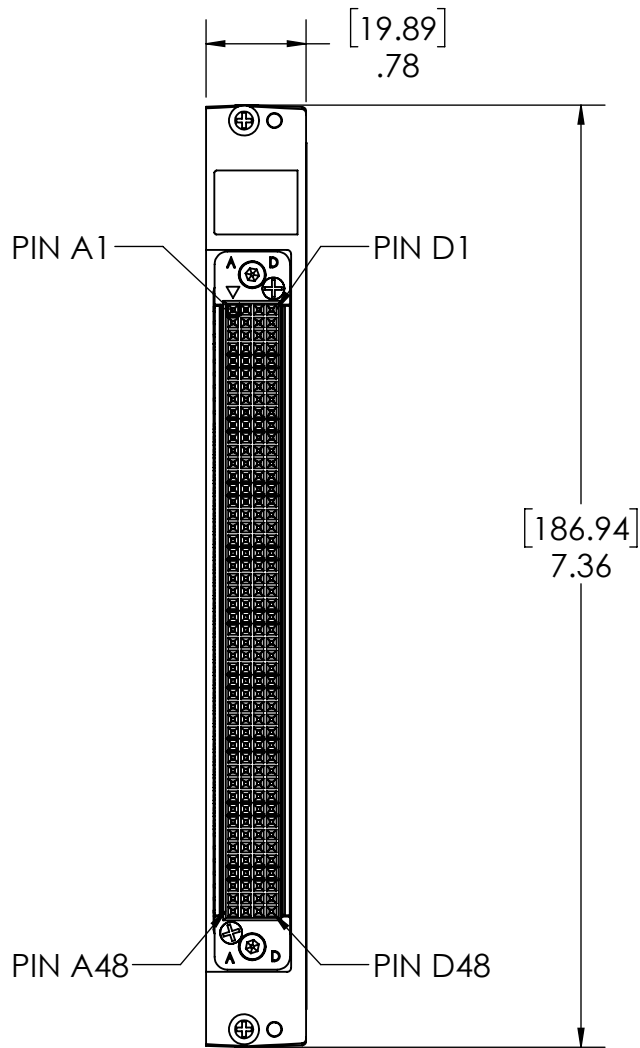
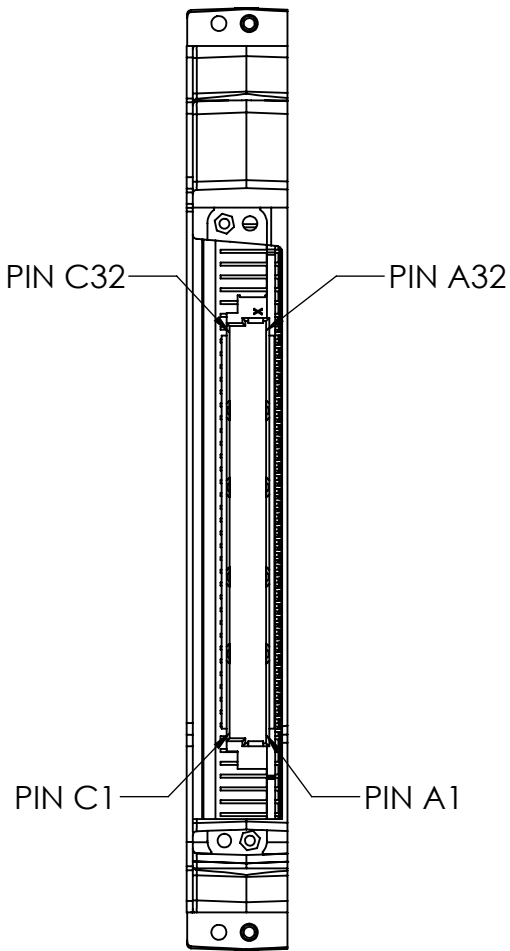
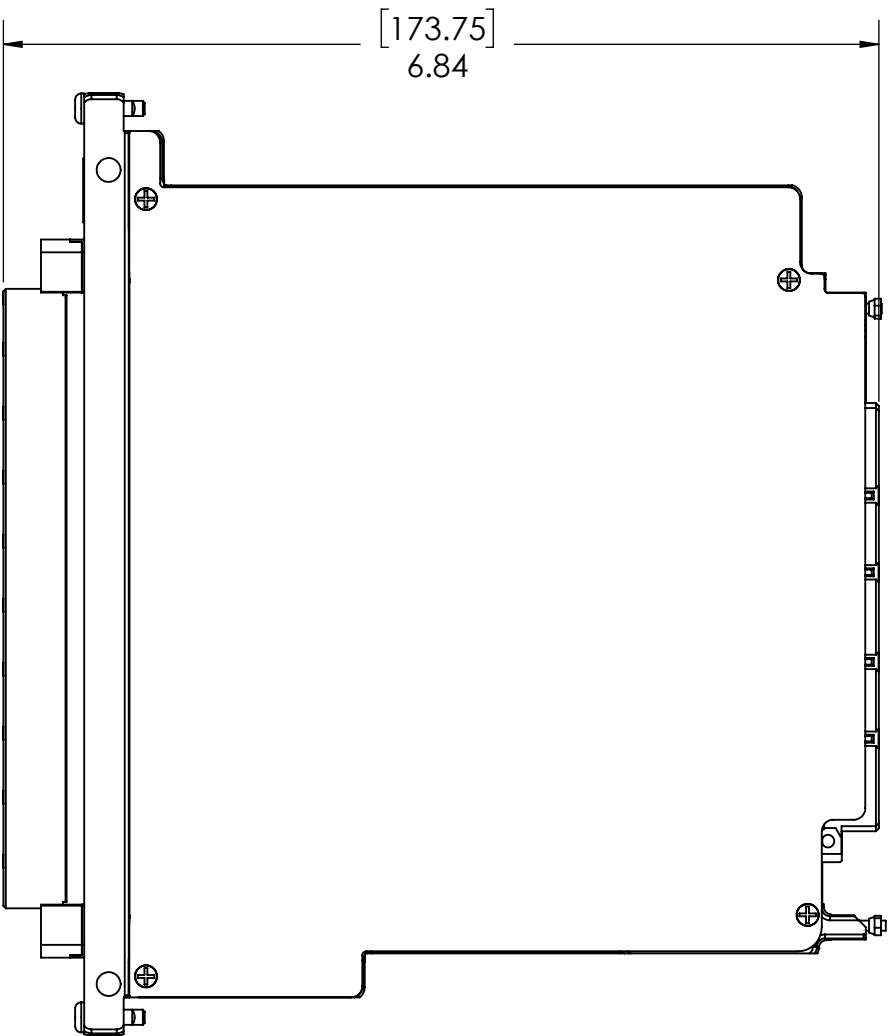


THE INFORMATION CONTAINED HEREIN IS THE EXCLUSIVE PROPERTY OF VIRGINIA PANEL CORPORATION AND IS SUBMITTED FOR USE BY THE CUSTOMER ONLY. THE DATA SHALL NOT BE DUPLICATED, USED, OR DISCLOSED IN WHOLE OR IN PART FOR ANY PURPOSE OTHER THAN TO MAINTAIN THE EQUIPMENT PROVIDED.

REV	DESCRIPTION	DATE	ENGINEER
C	ECN #12638	6/17/22	R HERRON



192 PIN QUADRAPADDLE RECEIVER  
MATING FACE  
J1

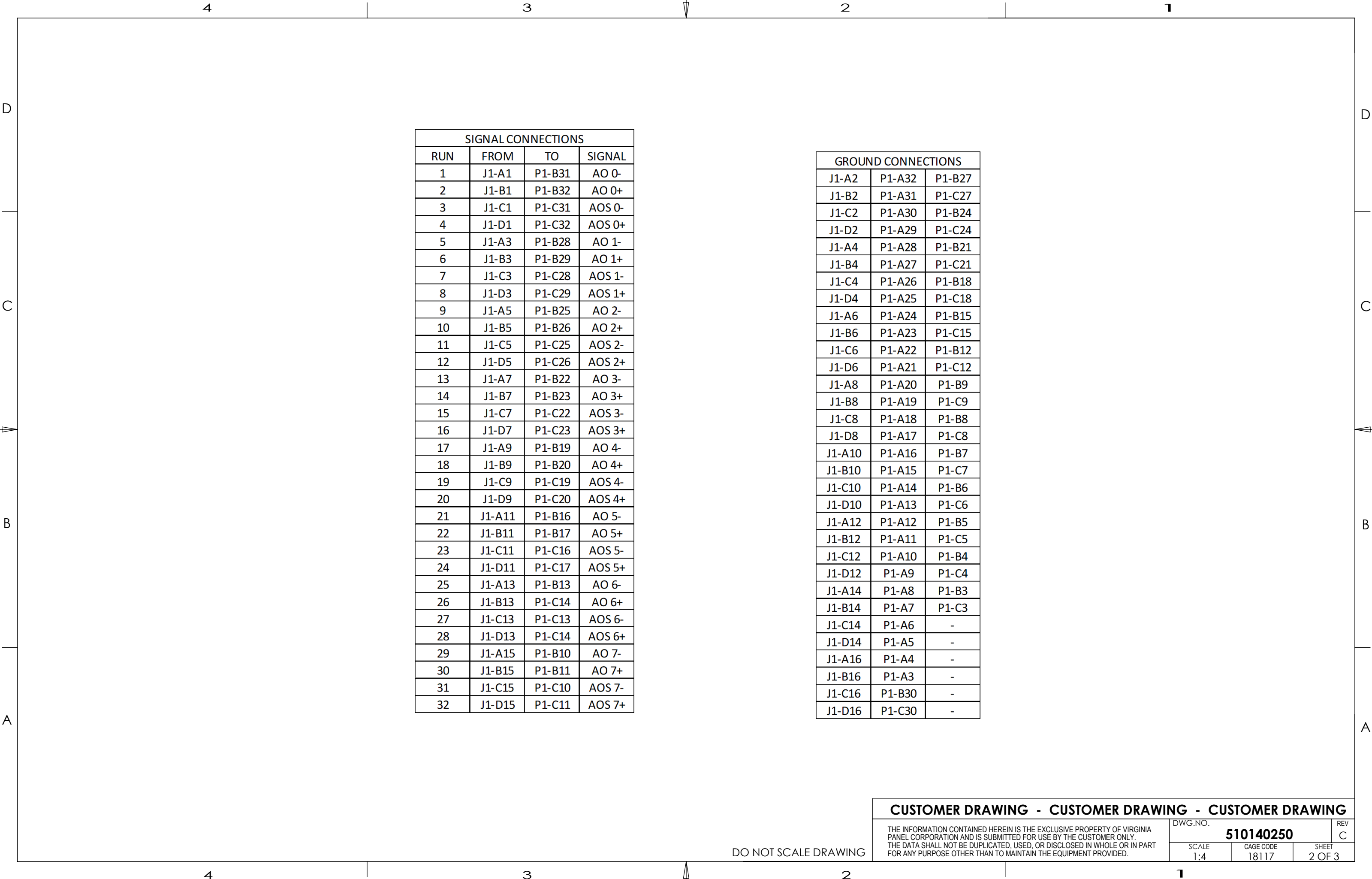


160 PIN FEMALE DIN  
MATING FACE  
P1

6. SEE SHEET 3 FOR NOTE 6.  
5. SEE SHEET 3 FOR NOTE 5.  
4. SEE SHEET 3 FOR INSTALLATION INSTRUCTIONS.  
3. SEE SHEET 2 FOR TRACE LIST.  
2. MATING ITA MODULE: 510151105 (1)  
MATING ITA PATCHCORDS: 7-121425000-036 (16)

NOTES:

CUSTOMER DRAWING			
VPC			
PTA, QP, f/ NI PXIe-4322			
RELATIVE CONNECTOR POSITIONS AND WIRE ROUTING ARE GENERIC AND MAY VARY WITH PINOUT		DWG.NO.	REV
DIMENSIONS ARE SHOWN AS: [MILLIMETERS] INCHES		510140250	C
SCALE 1:4	CAGE CODE 18117	SHEET 1 OF 3	



SIGNAL CONNECTIONS			
RUN	FROM	TO	SIGNAL
1	J1-A1	P1-B31	AO 0-
2	J1-B1	P1-B32	AO 0+
3	J1-C1	P1-C31	AOS 0-
4	J1-D1	P1-C32	AOS 0+
5	J1-A3	P1-B28	AO 1-
6	J1-B3	P1-B29	AO 1+
7	J1-C3	P1-C28	AOS 1-
8	J1-D3	P1-C29	AOS 1+
9	J1-A5	P1-B25	AO 2-
10	J1-B5	P1-B26	AO 2+
11	J1-C5	P1-C25	AOS 2-
12	J1-D5	P1-C26	AOS 2+
13	J1-A7	P1-B22	AO 3-
14	J1-B7	P1-B23	AO 3+
15	J1-C7	P1-C22	AOS 3-
16	J1-D7	P1-C23	AOS 3+
17	J1-A9	P1-B19	AO 4-
18	J1-B9	P1-B20	AO 4+
19	J1-C9	P1-C19	AOS 4-
20	J1-D9	P1-C20	AOS 4+
21	J1-A11	P1-B16	AO 5-
22	J1-B11	P1-B17	AO 5+
23	J1-C11	P1-C16	AOS 5-
24	J1-D11	P1-C17	AOS 5+
25	J1-A13	P1-B13	AO 6-
26	J1-B13	P1-C14	AO 6+
27	J1-C13	P1-C13	AOS 6-
28	J1-D13	P1-C14	AOS 6+
29	J1-A15	P1-B10	AO 7-
30	J1-B15	P1-B11	AO 7+
31	J1-C15	P1-C10	AOS 7-
32	J1-D15	P1-C11	AOS 7+

GROUND CONNECTIONS		
J1-A2	P1-A32	P1-B27
J1-B2	P1-A31	P1-C27
J1-C2	P1-A30	P1-B24
J1-D2	P1-A29	P1-C24
J1-A4	P1-A28	P1-B21
J1-B4	P1-A27	P1-C21
J1-C4	P1-A26	P1-B18
J1-D4	P1-A25	P1-C18
J1-A6	P1-A24	P1-B15
J1-B6	P1-A23	P1-C15
J1-C6	P1-A22	P1-B12
J1-D6	P1-A21	P1-C12
J1-A8	P1-A20	P1-B9
J1-B8	P1-A19	P1-C9
J1-C8	P1-A18	P1-B8
J1-D8	P1-A17	P1-C8
J1-A10	P1-A16	P1-B7
J1-B10	P1-A15	P1-C7
J1-C10	P1-A14	P1-B6
J1-D10	P1-A13	P1-C6
J1-A12	P1-A12	P1-B5
J1-B12	P1-A11	P1-C5
J1-C12	P1-A10	P1-B4
J1-D12	P1-A9	P1-C4
J1-A14	P1-A8	P1-B3
J1-B14	P1-A7	P1-C3
J1-C14	P1-A6	-
J1-D14	P1-A5	-
J1-A16	P1-A4	-
J1-B16	P1-A3	-
J1-C16	P1-B30	-
J1-D16	P1-C30	-

CUSTOMER DRAWING - CUSTOMER DRAWING - CUSTOMER DRAWING

THE INFORMATION CONTAINED HEREIN IS THE EXCLUSIVE PROPERTY OF VIRGINIA PANEL CORPORATION AND IS SUBMITTED FOR USE BY THE CUSTOMER ONLY.  
THE DATA SHALL NOT BE DUPLICATED, USED, OR DISCLOSED IN WHOLE OR IN PART FOR ANY PURPOSE OTHER THAN TO MAINTAIN THE EQUIPMENT PROVIDED.

DWG.NO.

510140250

REV

C

SCALE

1:4

CAGE CODE

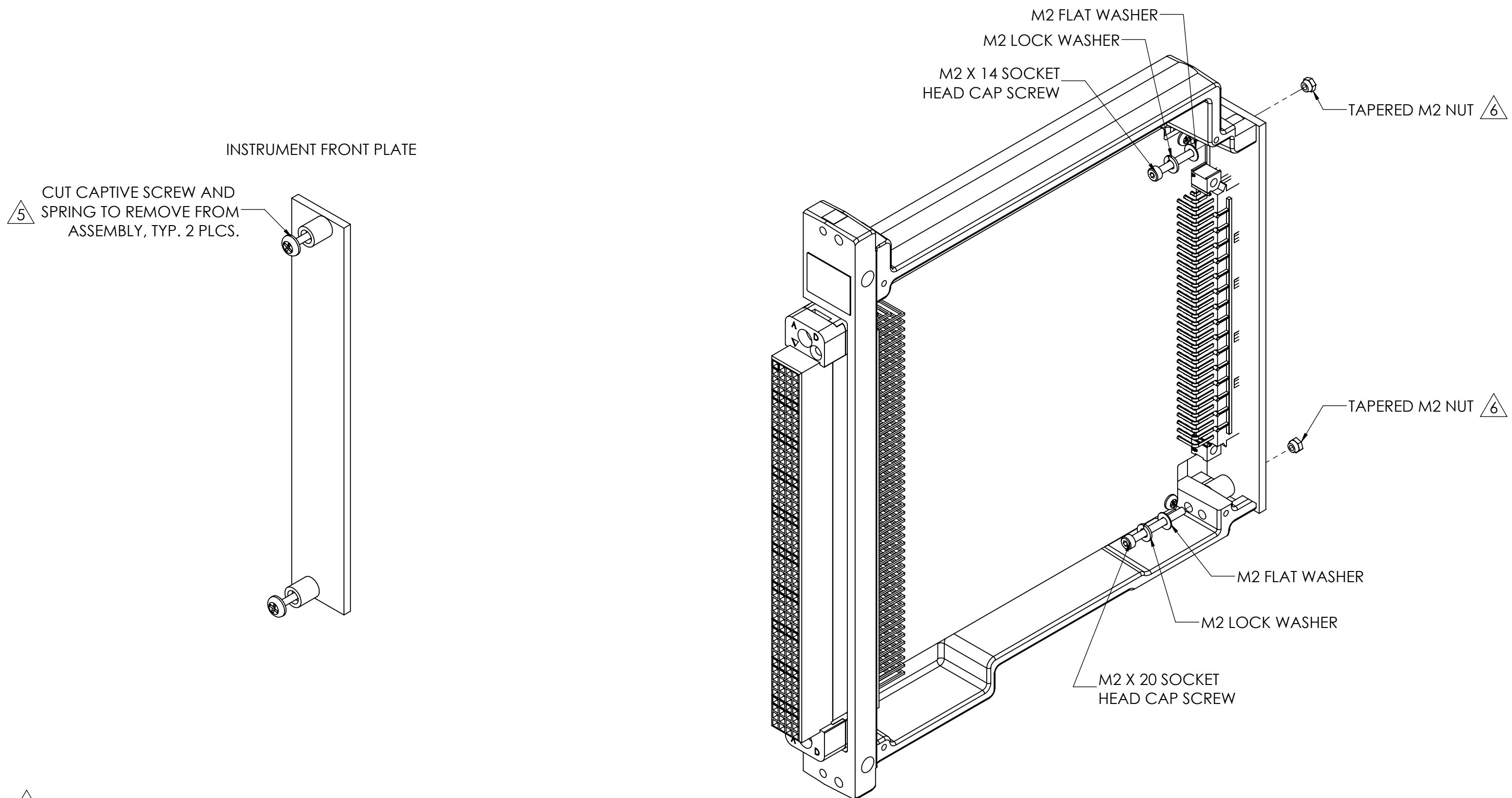
18117

SHEET

2 OF 3

DO NOT SCALE DRAWING

ASSEMBLY INSTRUCTIONS



6 MOUNT M2 SCREWS THROUGH CAPTIVE HARDWARE RECEPTACLE.

5 SPRING NOT SHOWN

NOTES:

DO NOT SCALE DRAWING

CUSTOMER DRAWING - CUSTOMER DRAWING - CUSTOMER DRAWING

THE INFORMATION CONTAINED HEREIN IS THE EXCLUSIVE PROPERTY OF VIRGINIA PANEL CORPORATION AND IS SUBMITTED FOR USE BY THE CUSTOMER ONLY. THE DATA SHALL NOT BE DUPLICATED, USED, OR DISCLOSED IN WHOLE OR IN PART FOR ANY PURPOSE OTHER THAN TO MAINTAIN THE EQUIPMENT PROVIDED.

DWG.NO.	510140250	REV	C
SCALE	1:4	CAGE CODE	18117
SHEET	3 OF 3		