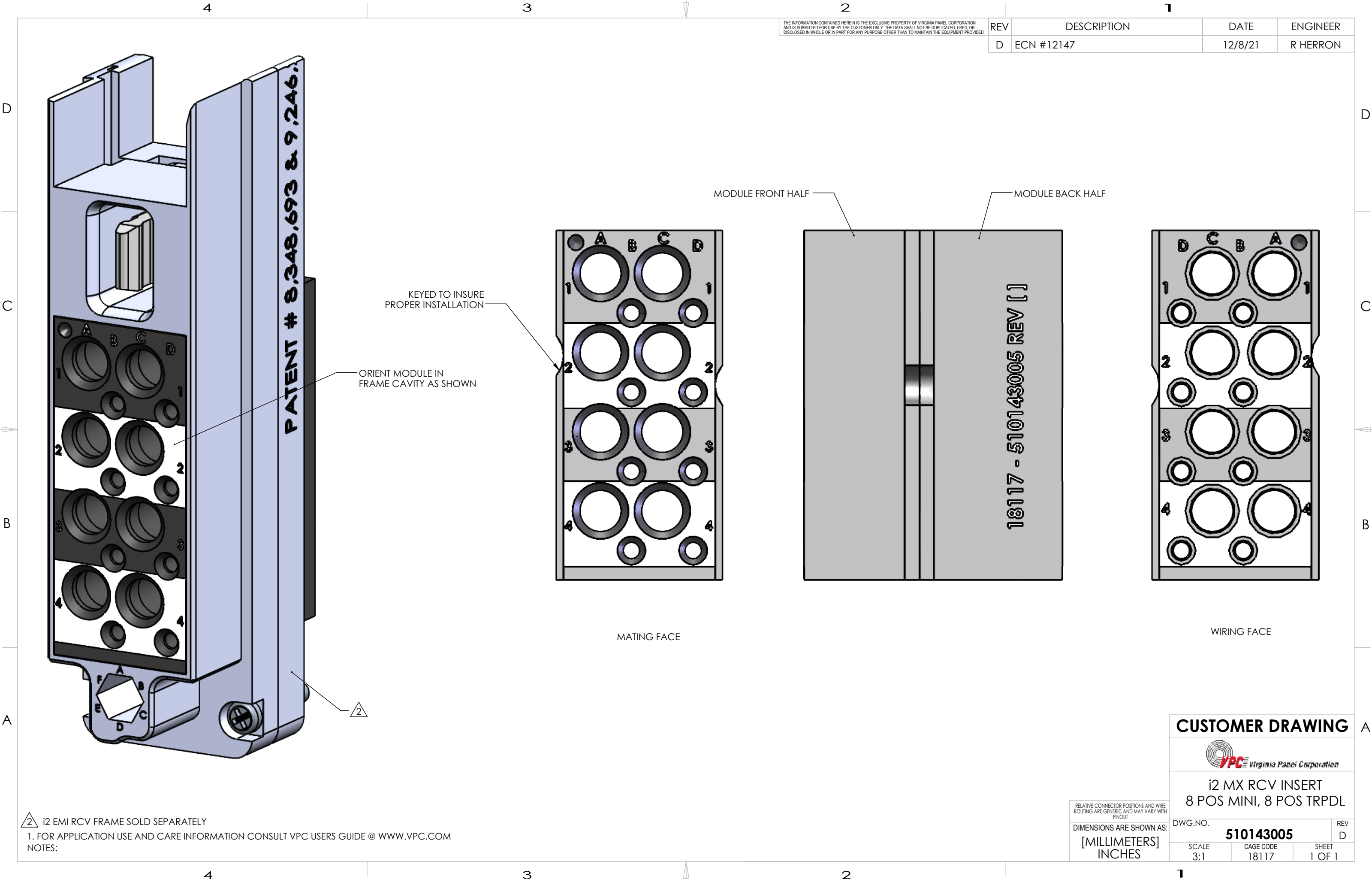


THE INFORMATION CONTAINED HEREIN IS THE EXCLUSIVE PROPERTY OF VIRGINIA PANEL CORPORATION AND IS SUBMITTED FOR USE BY THE CUSTOMER ONLY. THE DATA SHALL NOT BE DUPLICATED, USED, OR DISCLOSED IN WHOLE OR IN PART FOR ANY PURPOSE OTHER THAN TO MAINTAIN THE EQUIPMENT PROVIDED.

| REV | DESCRIPTION | DATE    | ENGINEER |
|-----|-------------|---------|----------|
| D   | ECN #12147  | 12/8/21 | R HERRON |



△ i2 EMI RCV FRAME SOLD SEPARATELY  
 1. FOR APPLICATION USE AND CARE INFORMATION CONSULT VPC USERS GUIDE @ WWW.VPC.COM  
 NOTES:

RELATIVE CONNECTOR POSITIONS AND WIRE ROUTING ARE GENERIC AND MAY VARY WITH PINOUT  
 DIMENSIONS ARE SHOWN AS:  
 [MILLIMETERS]  
 INCHES

**CUSTOMER DRAWING**

**VPC** Virginia Panel Corporation

i2 MX RCV INSERT  
 8 POS MINI, 8 POS TRPDL

|                  |           |        |
|------------------|-----------|--------|
| DWG.NO.          | REV       |        |
| <b>510143005</b> | D         |        |
| SCALE            | CAGE CODE | SHEET  |
| 3:1              | 18117     | 1 OF 1 |