

4

3

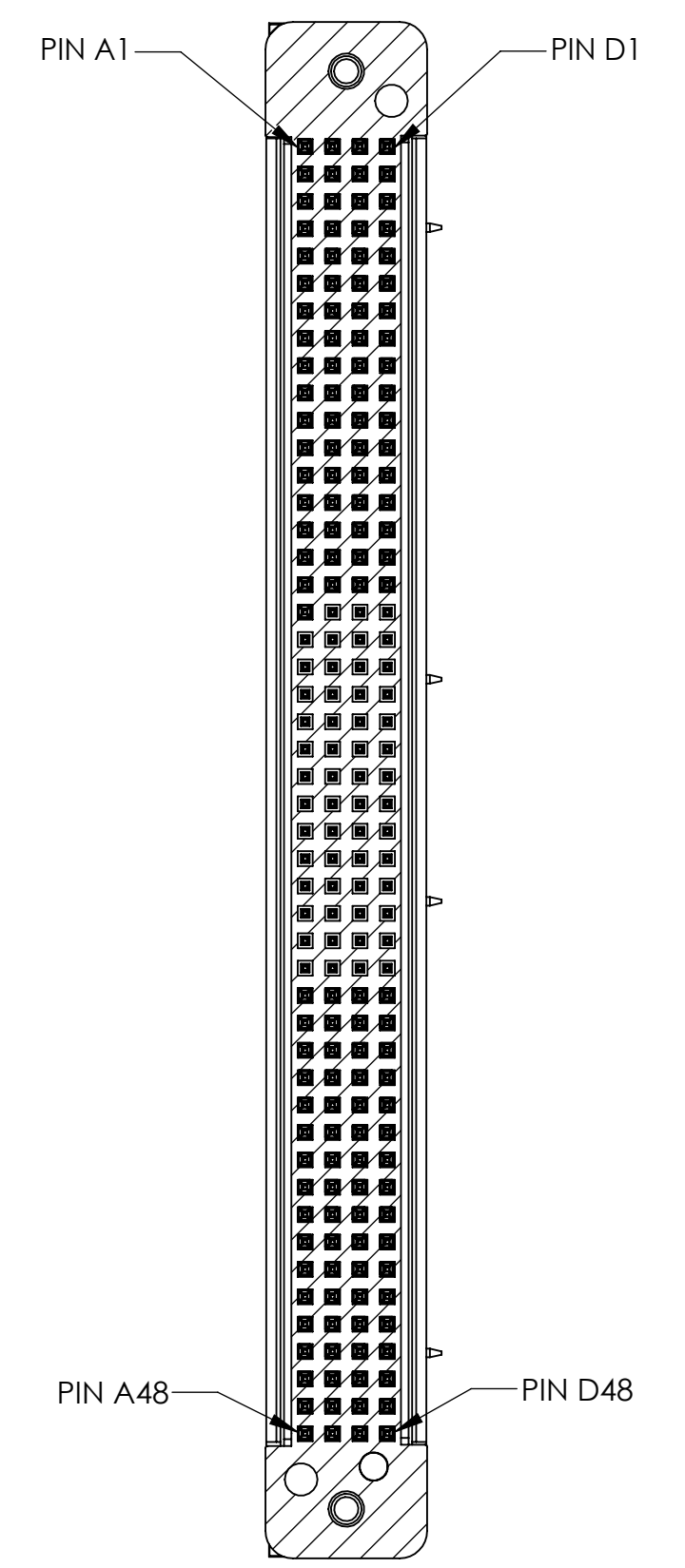
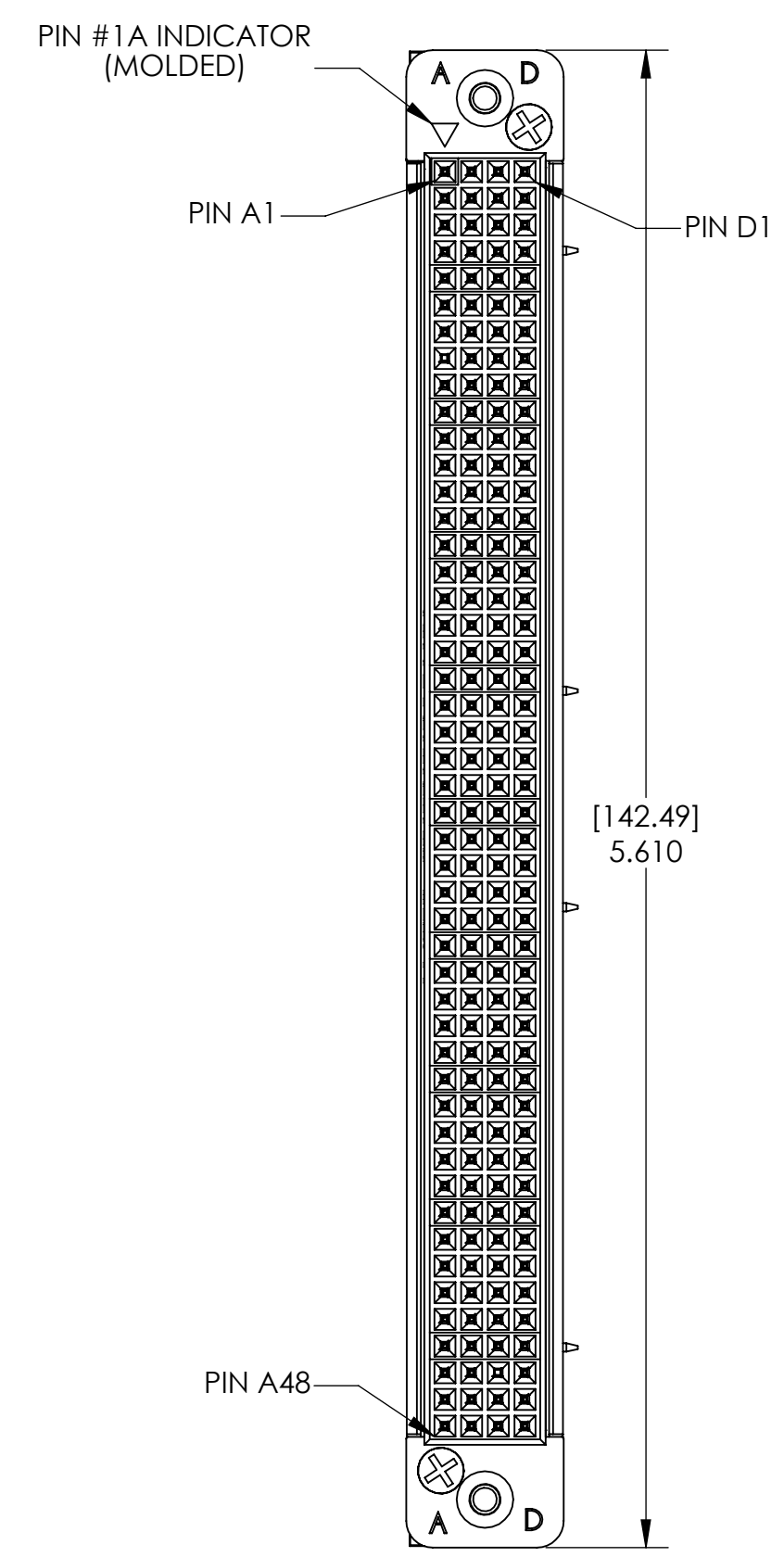
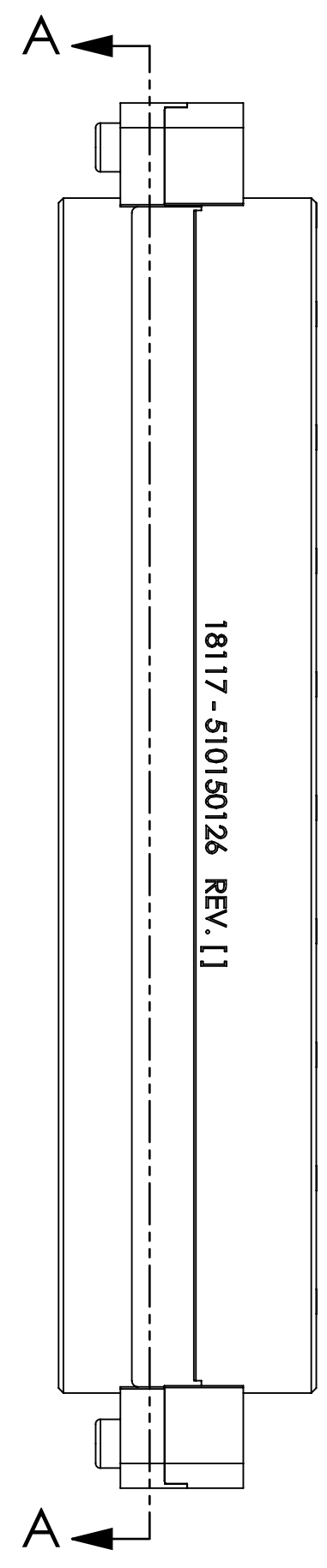
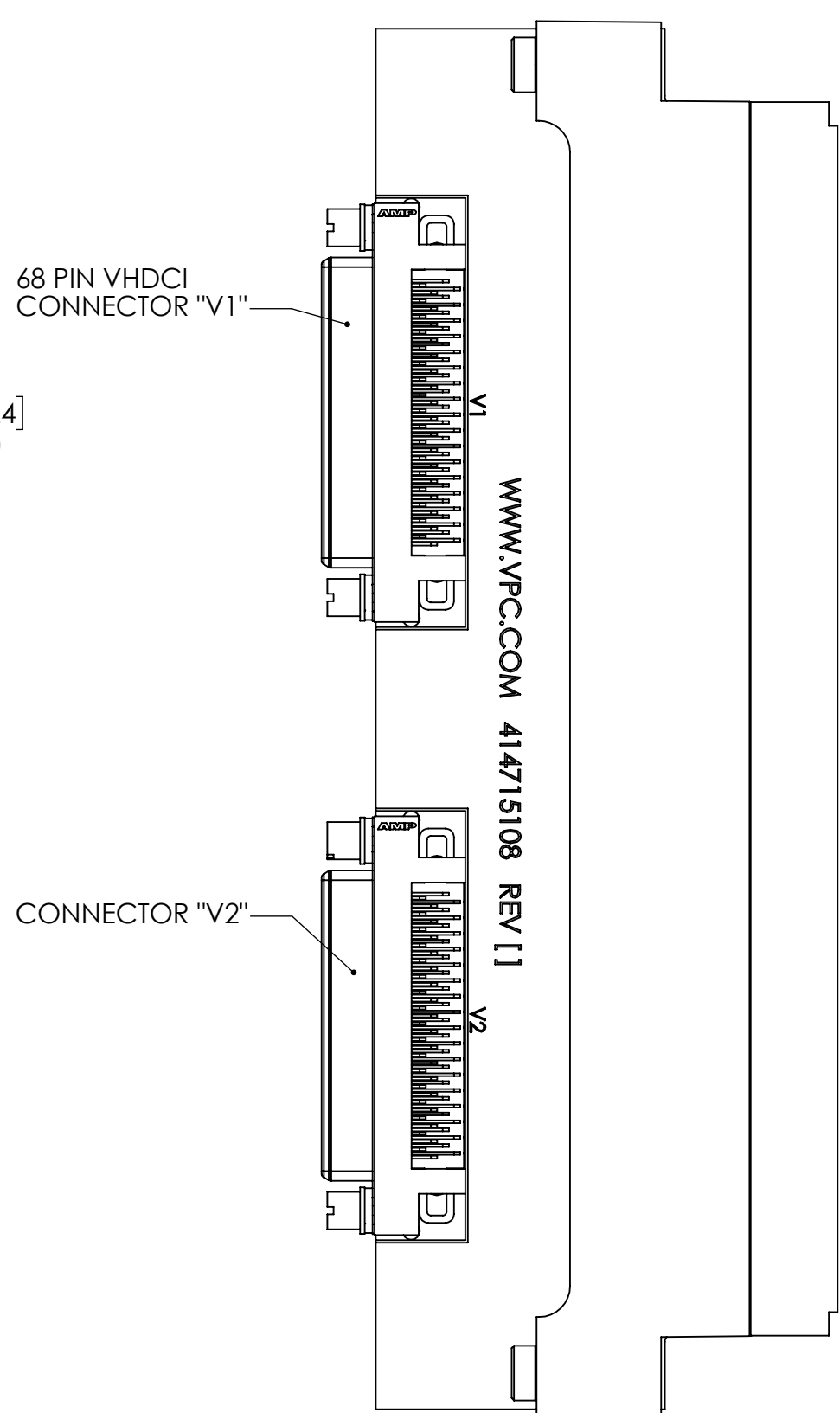
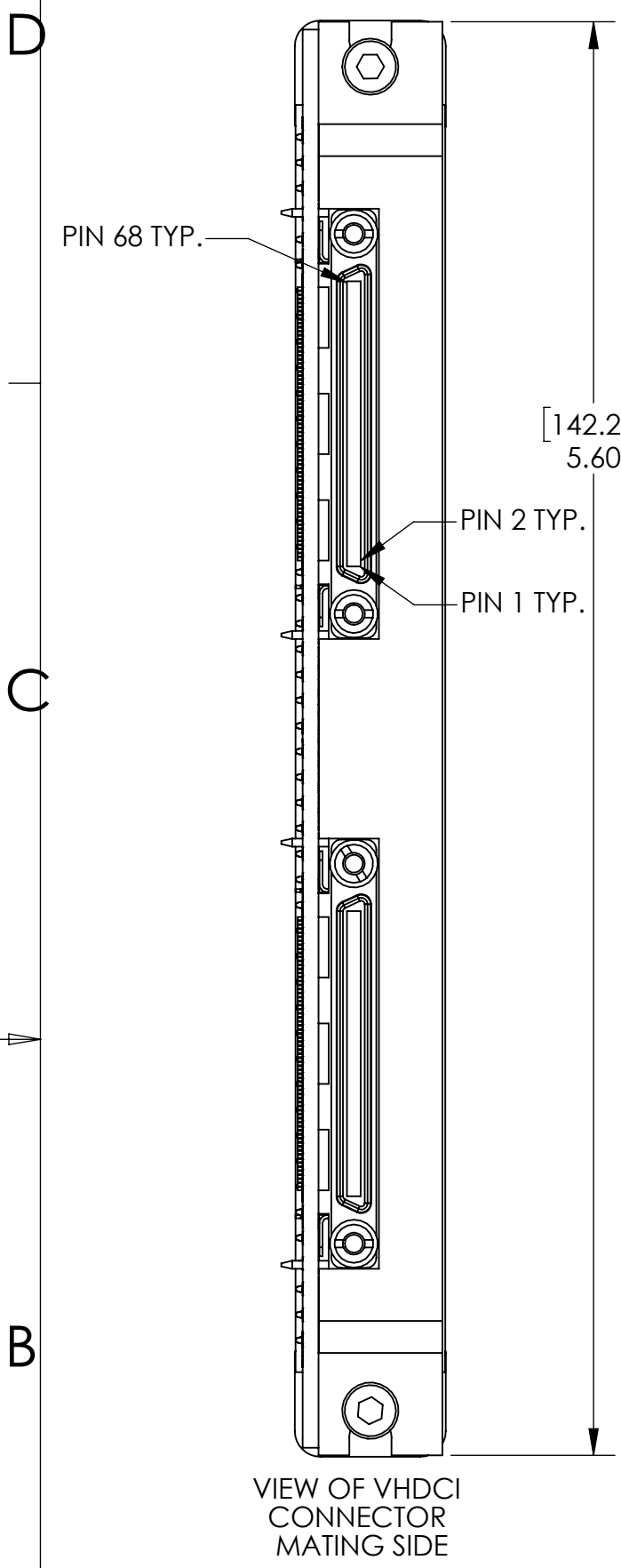
2

1

DO NOT SCALE DRAWING

THE INFORMATION CONTAINED HEREIN IS THE EXCLUSIVE PROPERTY OF VIRGINIA PANEL CORP. AND IS SUBMITTED FOR USE BY THE CUSTOMER ONLY. THE DATA SHALL NOT BE DUPLICATED, USED, OR DISCLOSED IN WHOLE OR IN PART FOR ANY PURPOSE OTHER THAN TO MAINTAIN THE EQUIPMENT PROVIDED. CONSULT WITH VIRGINIA PANEL CORPORATION ENGINEERING IF MORE DETAIL IS REQUIRED.

REVISIONS				
ZONE	REV	DESCRIPTION	DATE	APPROVED
	M	ECN #12808	8/29/22	R HERRON



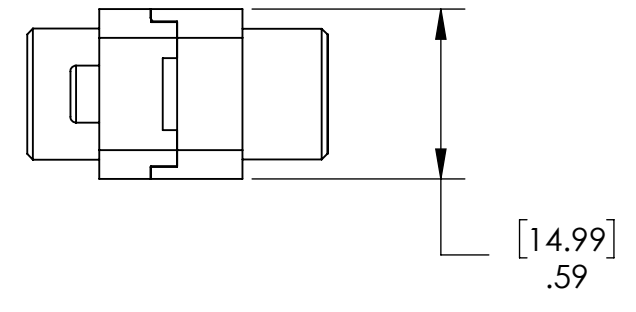
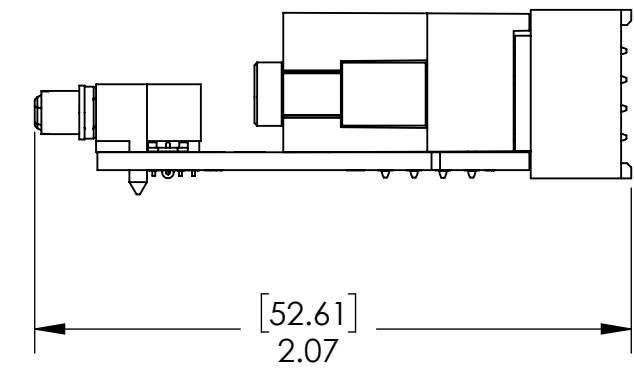
4.. WHEN LOADING PCBs SIDE-BY-SIDE SOLDER TAILS COULD INTERFERE WITH ADJACENT PCBs

3 TECHNICAL DATA:
 CONNECTOR:
 CURRENT = .5 AMP @ 30 VAC
 TEMP = -55° to 85° C
 TERMINATION RESISTANCE = 10 MILLIOHMS
 ISULATION RESISTANCE = 500 MEGAOHMS
 DWV = 250 VAC
 BOARD:
 CURRENT = .5 AMP @ 30 VAC
 MATERIALS:
 CONNECTOR:
 SHELL = STEEL Ni PLATE OVER COPPER
 INSULATOR = BLACK LCP
 CONTACT = PHOS. BRONZE
 CONTACT PLATING = MATING AREA - .00076 MIN GOLD
 SOLDER POST - TIN LEAD. LEAD < 0.1% BY WEIGHT
 OVER ENTIRE Ni UNDERPLATE

BOARD: FR-4/21 w/ SOLDERMASK

1 FOR APPLICATION, USE & CARE INFORMATION CONSULT VPC USERS GUIDE @WWW.VPC.COM

NOTES:



CUSTOMER DRAWING - CUSTOMER DRAWING

SOLIDWORKS DRAWING FILE	DIMENSIONS ARE SHOWN AS: (millimeters) INCHES		SIGNATURES		DATE	VIRGINIA PANEL CORPORATION WWW.VPC.COM		
			DR	R. HERRON	5/19/03			
	REMOVE BURRS. BREAK SHARP EDGES		CHK			192 RCV MOD RT ANG PCB W/ 2-68 VHDCI ASM		
	MATERIAL		ENG					
	FINISH		PROD					
		ASSY			SIZE	FSCM NO.	DWG. NO.	REV
		QA			C	18117	510150126	M
		APPD			SCALE: NONE	5/19/03	510150126	SHEET 1 OF 2

4

3

2

1

4

3

2

1

DO NOT SCALE DRAWING

SIGNAL TRACES

A1-V1,68	B1-V1,67	C1-V1,34	D1-V1,33	A48-V2,36	B48-V2,35	C48-V2,2	D48-V2,1
A2-V1,66	B2-V1,65	C2-V1,32	D2-V1,31	A47-V2,38	B47-V2,37	C47-V2,4	D47-V2,3
A3-V1,64	B3-V1,63	C3-V1,30	D3-V1,29	A46-V2,40	B46-V2,39	C46-V2,6	D46-V2,5
A4-V1,62	B4-V1,61	C4-V1,28	D4-V1,27	A45-V2,42	B45-V2,41	C45-V2,8	D45-V2,7
A5-V1,60	B5-V1,59	C5-V1,26	D5-V1,25	A44-V2,44	B44-V2,43	C44-V2,10	D44-V2,9
A6-V1,58	B6-V1,57	C6-V1,24	D6-V1,23	A43-V2,46	B43-V2,45	C43-V2,12	D43-V2,11
A7-V1,56	B7-V1,55	C7-V1,22	D7-V1,21	A42-V2,48	B42-V2,47	C42-V2,14	D42-V2,13
A8-V1,54	B8-V1,53	C8-V1,20	D8-V1,19	A41-V2,50	B41-V2,49	C41-V2,16	D41-V2,15
A9-V1,52	B9-V1,51	C9-V1,18	D9-V1,17	A40-V2,52	B40-V2,51	C40-V2,18	D40-V2,17
A10-V1,50	B10-V1,49	C10-V1,16	D10-V1,15	A39-V2,54	B39-V2,53	C39-V2,20	D39-V2,19
A11-V1,48	B11-V1,47	C11-V1,14	D11-V1,13	A38-V2,56	B38-V2,55	C38-V2,22	D38-V2,21
A12-V1,46	B12-V1,45	C12-V1,12	D12-V1,11	A37-V2,58	B37-V2,57	C37-V2,24	D37-V2,23
A13-V1,44	B13-V1,43	C13-V1,10	D13-V1,9	A36-V2,60	B36-V2,59	C36-V2,26	D36-V2,25
A14-V1,42	B14-V1,41	C14-V1,8	D14-V1,7	A35-V2,62	B35-V2,61	C35-V2,28	D35-V2,27
A15-V1,40	B15-V1,39	C15-V1,6	D15-V1,5	A34-V2,64	B34-V2,63	C34-V2,30	D34-V2,29
A16-V1,38	B16-V1,37	C16-V1,4	D16-V1,3	A33-V2,66	B33-V2,65	C33-V2,32	D33-V2,31
A17-V1,36	B17-V1,35	C17-V1,2	D17-V1,1	A32-V2,68	B32-V2,67	C32-V2,34	D32-V2,33

NOTES:

1. AVAILABLE GROUNDING / SHIELDING POINT IS: A18 ONLY

CUSTOMER DRAWING				
DIMENSIONS ARE SHOWN AS:	SIZE	CAGE CODE	DWG. NO.	REV
[MILLIMETERS]	C	18117	510150126	M
INCHES	SCALE: 1:1	510150126	5/19/03	SHEET 2 OF 2

4

3

2

1