

4

3

2

1

DO NOT SCALE DRAWING

THE INFORMATION CONTAINED HEREIN IS THE EXCLUSIVE PROPERTY OF VIRGINIA PANEL CORP. AND IS SUBMITTED FOR USE BY THE CUSTOMER ONLY. THE DATA SHALL NOT BE DUPLICATED, USED, OR DISCLOSED IN WHOLE OR IN PART FOR ANY PURPOSE OTHER THAN TO MAINTAIN THE EQUIPMENT PROVIDED. CONSULT WITH VIRGINIA PANEL CORPORATION ENGINEERING IF MORE DETAIL IS REQUIRED.

REVISIONS				
ZONE	REV	DESCRIPTION	DATE	APPROVED
	N	ECN #12808	8/29/22	R HERRON

D

C

B

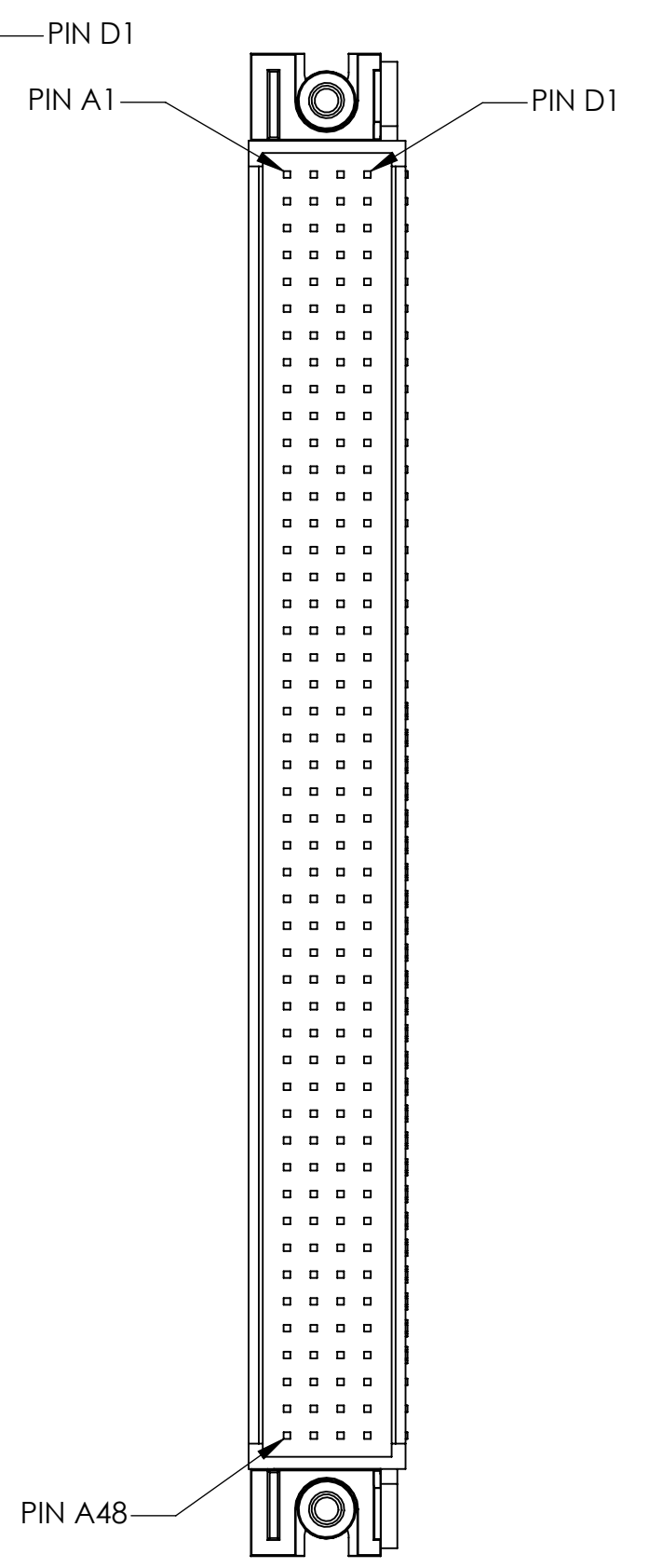
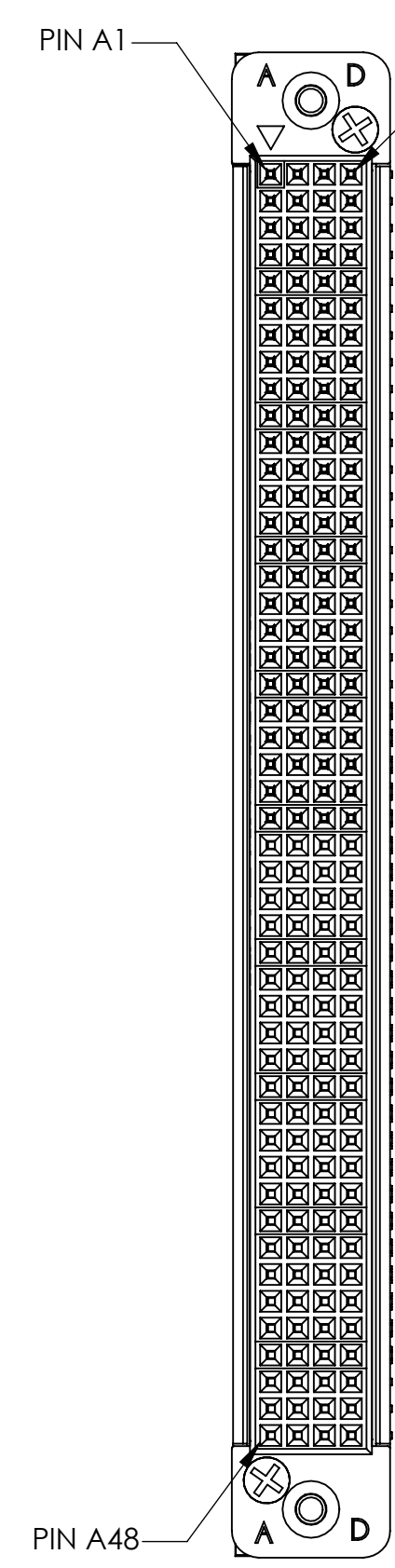
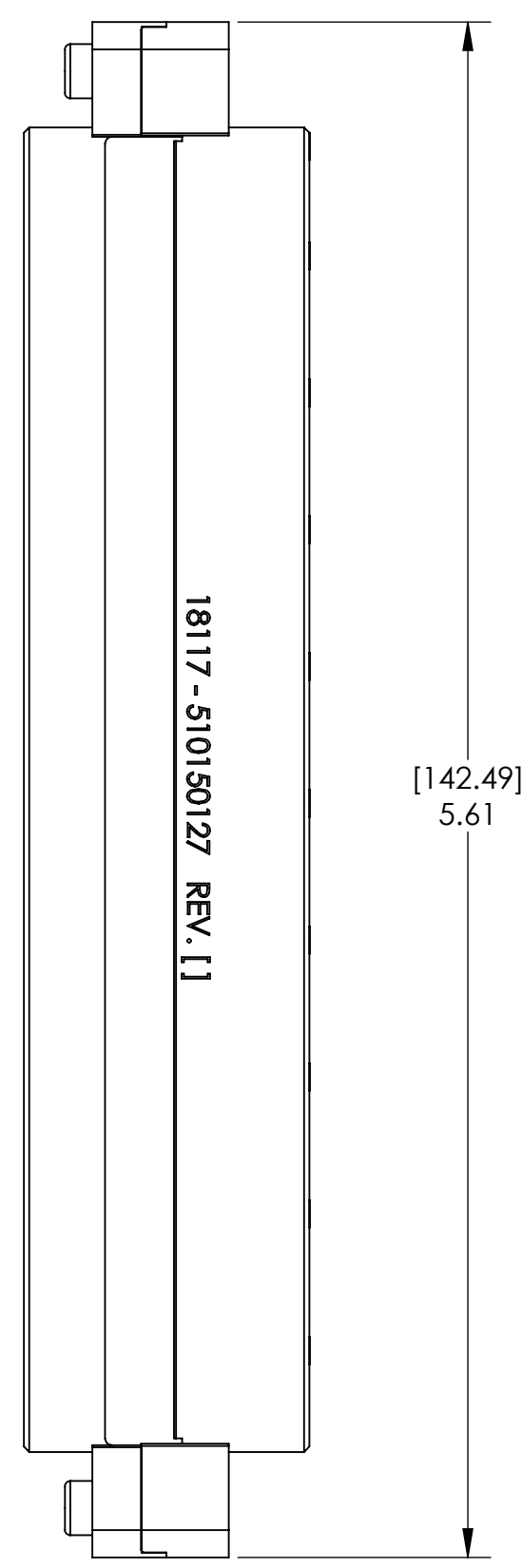
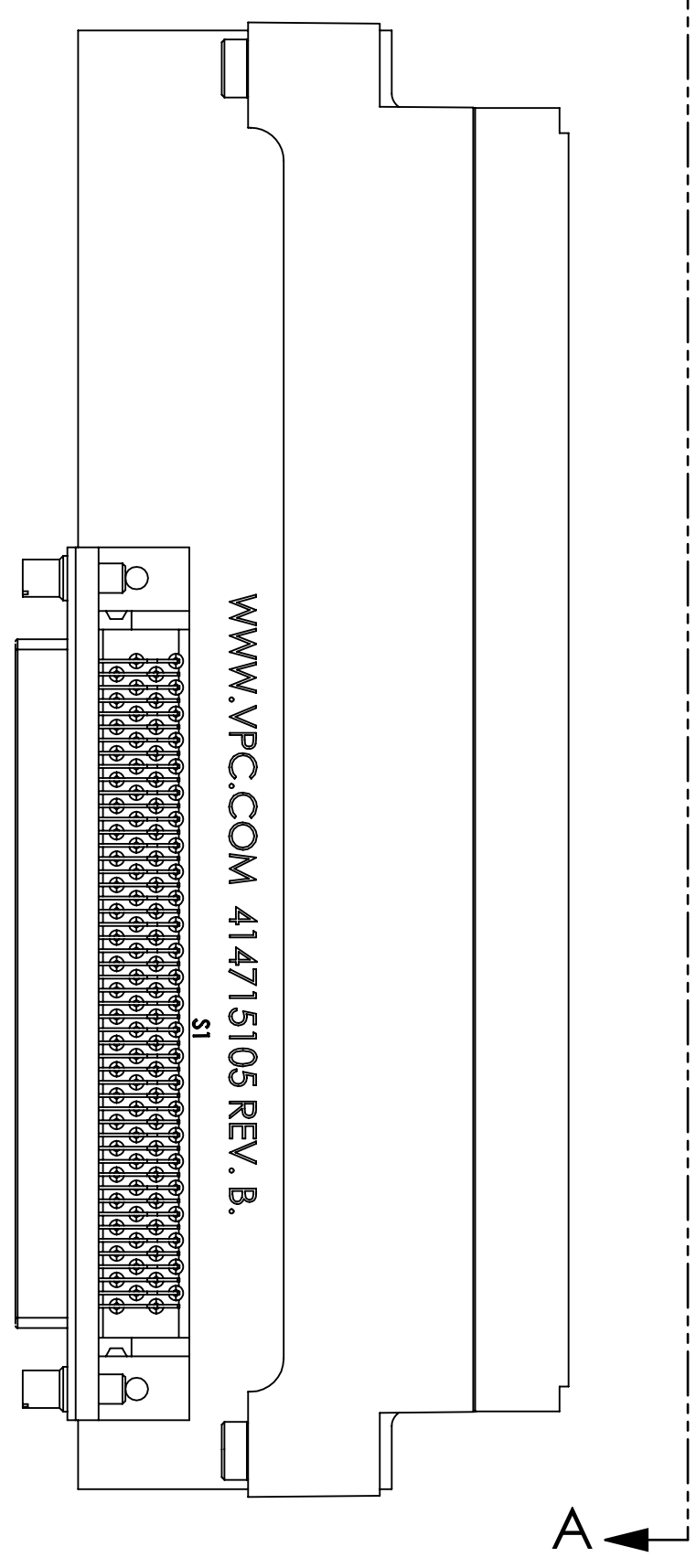
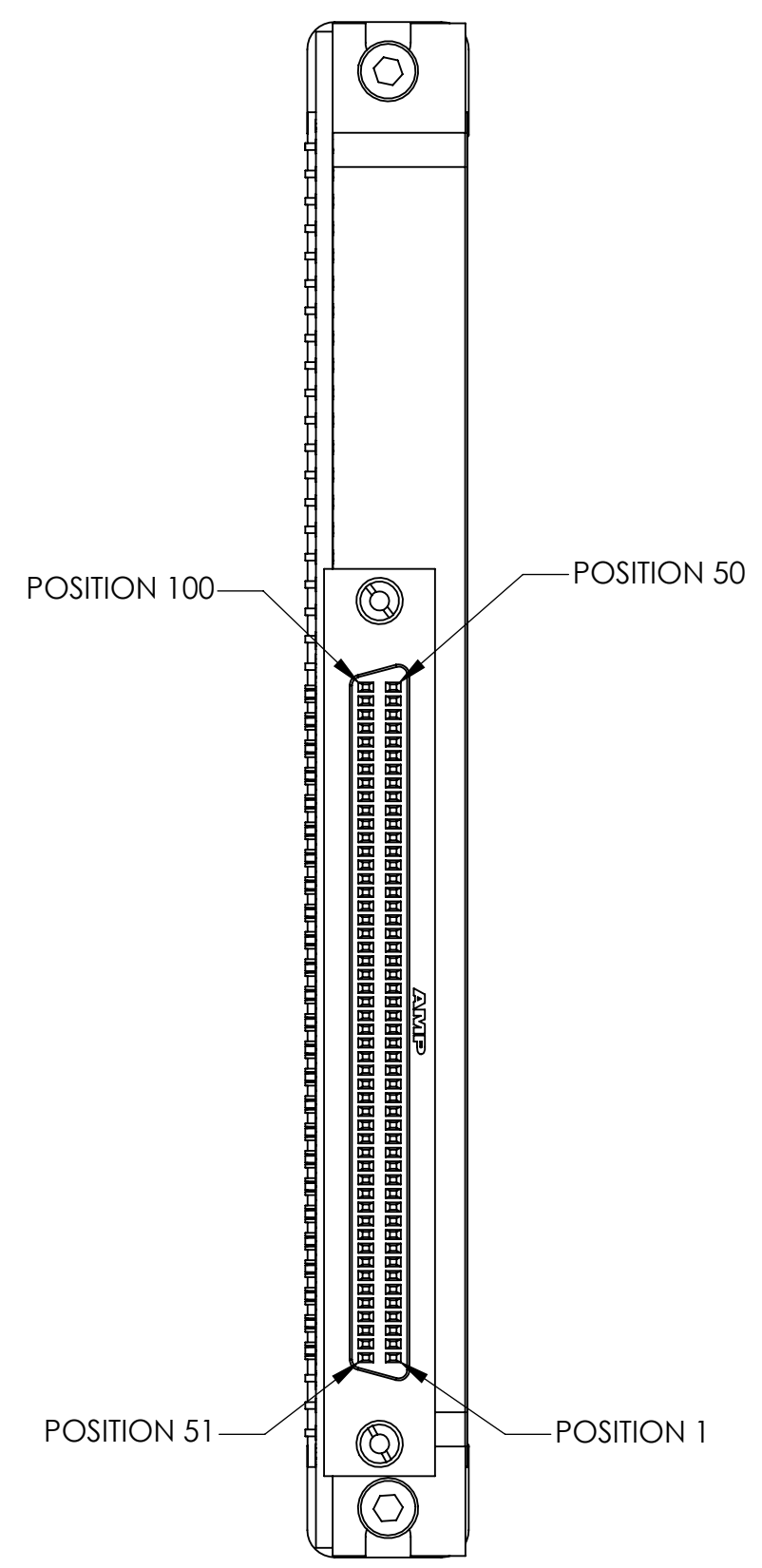
A

D

C

B

A



2. WHEN LOADING PCBs SIDE-BY-SIDE SOLDER TAILS COULD INTERFERE WITH ADJACENT PCBs.

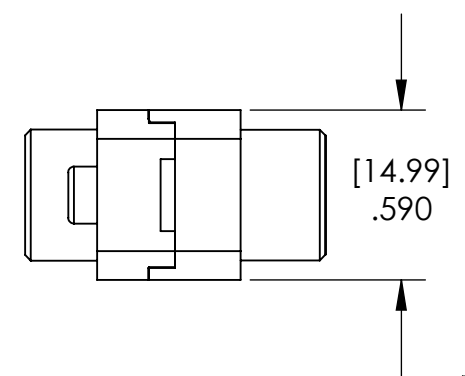
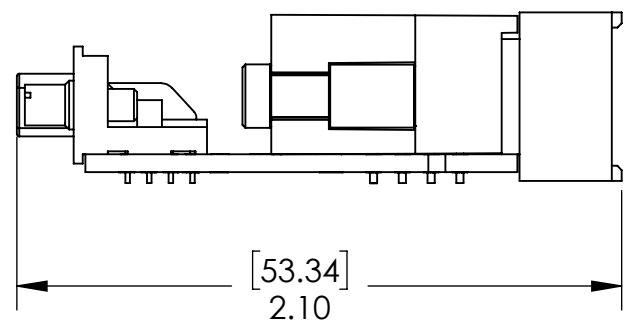
TECHNICAL DATA:
CONNECTOR:
CURRENT = 1 AMP @ 30 VAC
TEMP = -55° to 105° C
TERMINATION RESISTANCE = 25 MILLIOHMS
ISULATION RESISTANCE = 1000 MEGAOHMS
DWV = 500 VAC
BOARD:
CURRENT = 1 AMP @ 30 VAC

MATERIALS:
CONNECTOR:
BRACKET = DIE CAST ZINC Ni PLATE OVER COPPER
INSULATOR = BLACK LCP
CONTACT = PHOS. BRONZE
CONTACT PLATING = MATING AREA - .00076 MIN GOLD
SOLDER POST - TIN LEAD. LEAD < 0.1% BY WEIGHT
OVER ENTIRE Ni UNDERPLATE

BOARD: FR-4/21 w/ SOLDERMASK

1 FOR APPLICATION, USE & CARE INFORMATION CONSULT VPC USERS GUIDE @WWW.VPC.COM

NOTES:



VIEW OF VPC FRONT MATING (ITA) CONNECTOR SIDE. P/N 510150130.

SECTION A-A
VIEW OF BOARD MOUNTED RIGHT ANGLE HEADER MATING SIDE.

CUSTOMER DRAWING - CUSTOMER DRAWING

SOLIDWORKS DRAWING FILE	DIMENSIONS ARE SHOWN AS: (millimeters) INCHES		SIGNATURES		DATE	VIRGINIA PANEL CORPORATION WWW.VPC.COM		
	DR	E. HUBBARD	4/1/04					
	CHK	R. TAYLOR	4/2/04			192 QP TO 100 SCSI ADAPTER PCB		
	ENG							
	PROD							
MATERIAL	ASSY				SIZE	FSCM NO.	DWG. NO.	REV
FINISH	Q A				C	18117	510150127	N
	APPD				SCALE: NONE		510150127	SHEET 1 OF 2

4

3

2

1

DO NOT SCALE DRAWING

D
C
B
A

D
C
B
A

SIGNAL TRACES 1-100 SCSI TO 192 MODULE				
A1-S1,99	A7-S1,87	A13-S1,75	A19-S1,63	A25-S1,51
B1-S1,100	B7-S1,88	B13-S1,76	B19-S1,64	B25-S1,52
C1-S1,49	C7-S1,37	C13-S1,25	C19-S1,13	C25-S1,1
D1-S1,50	D7-S1,38	D13-S1,26	D19-S1,14	D25-S1,2
A2-S1,97	A8-S1,85	A14-S1,73	A20-S1,61	
B2-S1,98	B8-S1,86	B14-S1,74	B20-S1,62	
C2-S1,47	C8-S1,35	C14-S1,23	C20-S1,11	
D2-S1,48	D8-S1,36	D14-S1,24	D20-S1,12	
A3-S1,95	A9-S1,83	A15-S1,71	A21-S1,59	
B3-S1,96	B9-S1,84	B15-S1,72	B21-S1,60	
C3-S1,45	C9-S1,33	C15-S1,21	C21-S1,9	
D3-S1,46	D9-S1,34	D15-S1,22	D21-S1,10	
A4-S1,93	A10-S1,81	A16-S1,69	A22-S1,57	
B4-S1,94	B10-S1,82	B16-S1,70	B22-S1,58	
C4-S1,43	C10-S1,31	C16-S1,19	C22-S1,7	
D4-S1,44	D10-S1,32	D16-S1,20	D22-S1,8	
A5-S1,91	A11-S1,79	A17-S1,67	A23-S1,55	
B5-S1,92	B11-S1,80	B17-S1,68	B23-S1,56	
C5-S1,41	C11-S1,29	C17-S1,17	C23-S1,5	
D5-S1,42	D11-S1,30	D17-S1,18	D23-S1,6	
A6-S1,89	A12-S1,77	A18-S1,65	A24-S1,53	
B6-S1,90	B12-S1,78	B18-S1,66	B24-S1,54	
C6-S1,39	C12-S1,27	C18-S1,15	C24-S1,3	
D6-S1,40	D12-S1,28	D18-S1,16	D24-S1,4	

NOTES:

CUSTOMER DRAWING			
DIMENSIONS ARE SHOWN AS:	SIZE	CAGE CODE	DWG. NO.
[MILLIMETERS]	D	18117	510150127
INCHES	SCALE: 2:1	510150127	SHEET 2 OF 2