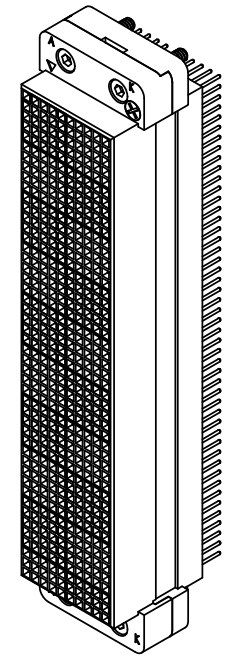
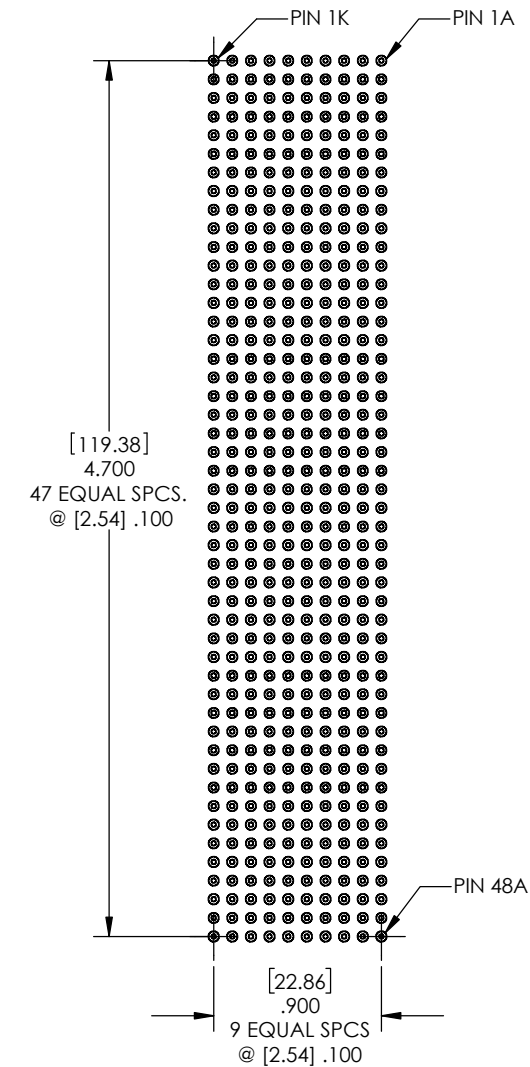
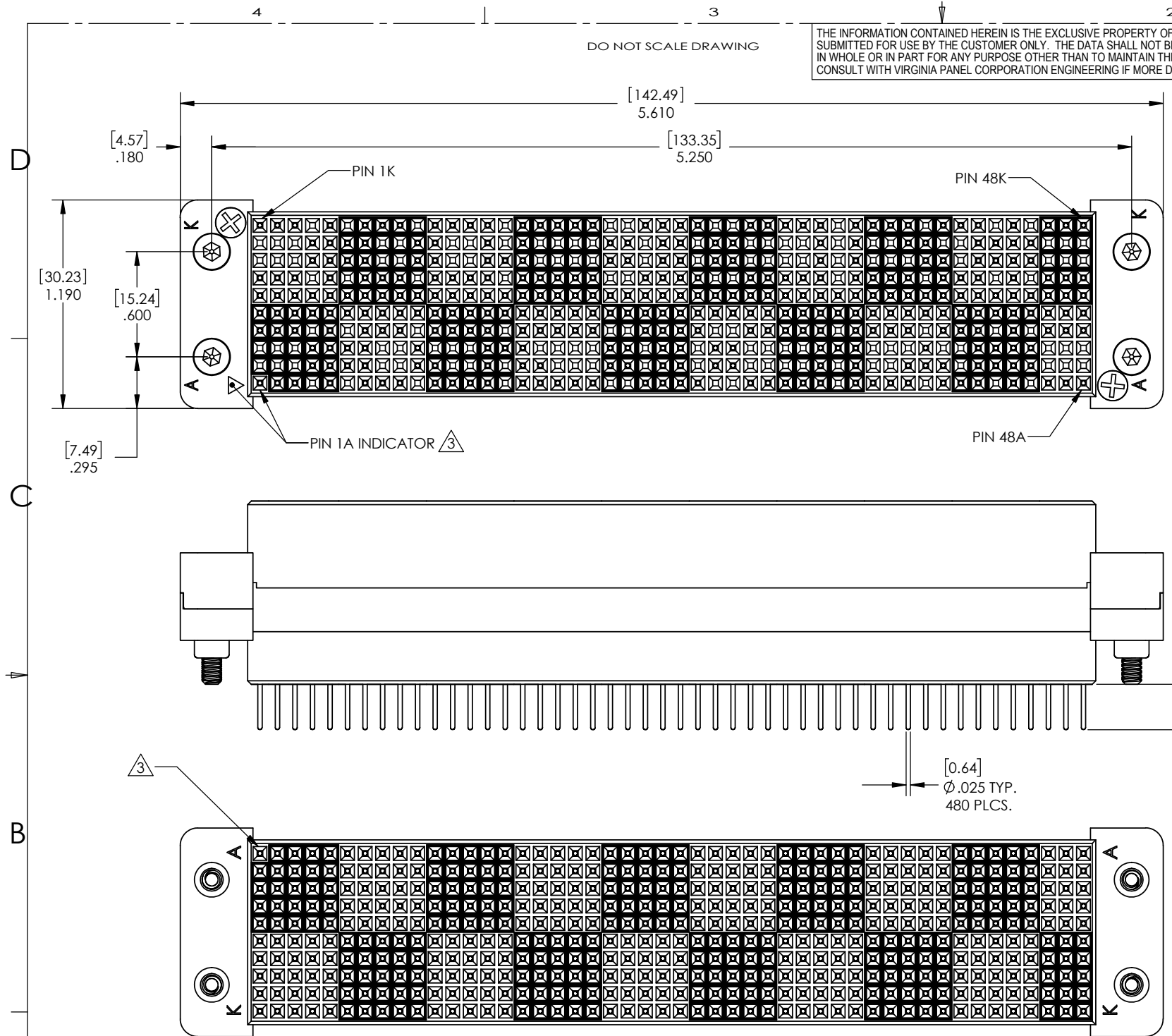


DO NOT SCALE DRAWING

THE INFORMATION CONTAINED HEREIN IS THE EXCLUSIVE PROPERTY OF VIRGINIA PANEL CORP. AND IS SUBMITTED FOR USE BY THE CUSTOMER ONLY. THE DATA SHALL NOT BE DUPLICATED, USED, OR DISCLOSED IN WHOLE OR IN PART FOR ANY PURPOSE OTHER THAN TO MAINTAIN THE EQUIPMENT PROVIDED. CONSULT WITH VIRGINIA PANEL CORPORATION ENGINEERING IF MORE DETAIL IS REQUIRED.

REVISIONS				
ZONE	REV	DESCRIPTION	DATE	APPROVED
	H	ECN # 15294	9/16/25	RF



③ PIN 1A DESIGNATED BY TRIANGULAR FEATURE ON FRONT AND BLACK CAVITY BORDER ON FRONT AND BACK

2 PHYSICAL CHARACTERISTICS:

WEIGHT: 4.8 OUNCES

MATERIAL:

MODULE BODY(TOP AND BOTTOM HALF): LIQUID CRYSTAL POLYMER (LCP)

MOUNTING HARDWARE: STAINLESS STEEL

INTERNAL FEMALE CONTACT:

BeCu ALLOY

PLATING - MATING SURFACES, 30 μ INCHES Au OVER 100 μ INCHES Ni

ALL OTHER AREAS WILL BE 5 μ INCHES Au OVER 100 μ INCHES Ni

EXTERNAL MALE CONTACT:

BRASS ALLOY

PLATING - ENTIRE SURFACE AREA 30 μ INCHES Au OVER 100 μ INCHES Ni

1 FOR APPLICATION, USE & CARE INFORMATION CONSULT VPC USERS GUIDE @WWW.VPC.COM

NOTES:

CUSTOMER DRAWING - CUSTOMER DRAWING

SOLIDWORKS DRAWING FILE	DIMENSIONS ARE SHOWN AS:		SIGNATURES		DATE	VIRGINIA PANEL CORPORATION			
	(millimeters)	INCHES	DR	R HERRON	9/24/03	WWW.VPC.COM			
REMOVE BURRS. BREAK SHARP EDGES			CHK	E HUBBARD	9/29/03	SIGNAL MODULE, RECEIVER, QUADRAPADDLE 480 POSITION, FULLY LOADED WITH ROUND POSTS			
MATERIAL			ENG			SIZE	FSCM NO.	DWG.NO.	REV
FINISH			PROD			C	18117	510150135	H
			ASSY			SCALE: NONE	9/24/03	510150135	SHEET 1 OF 1
			Q A						
			APPD						