

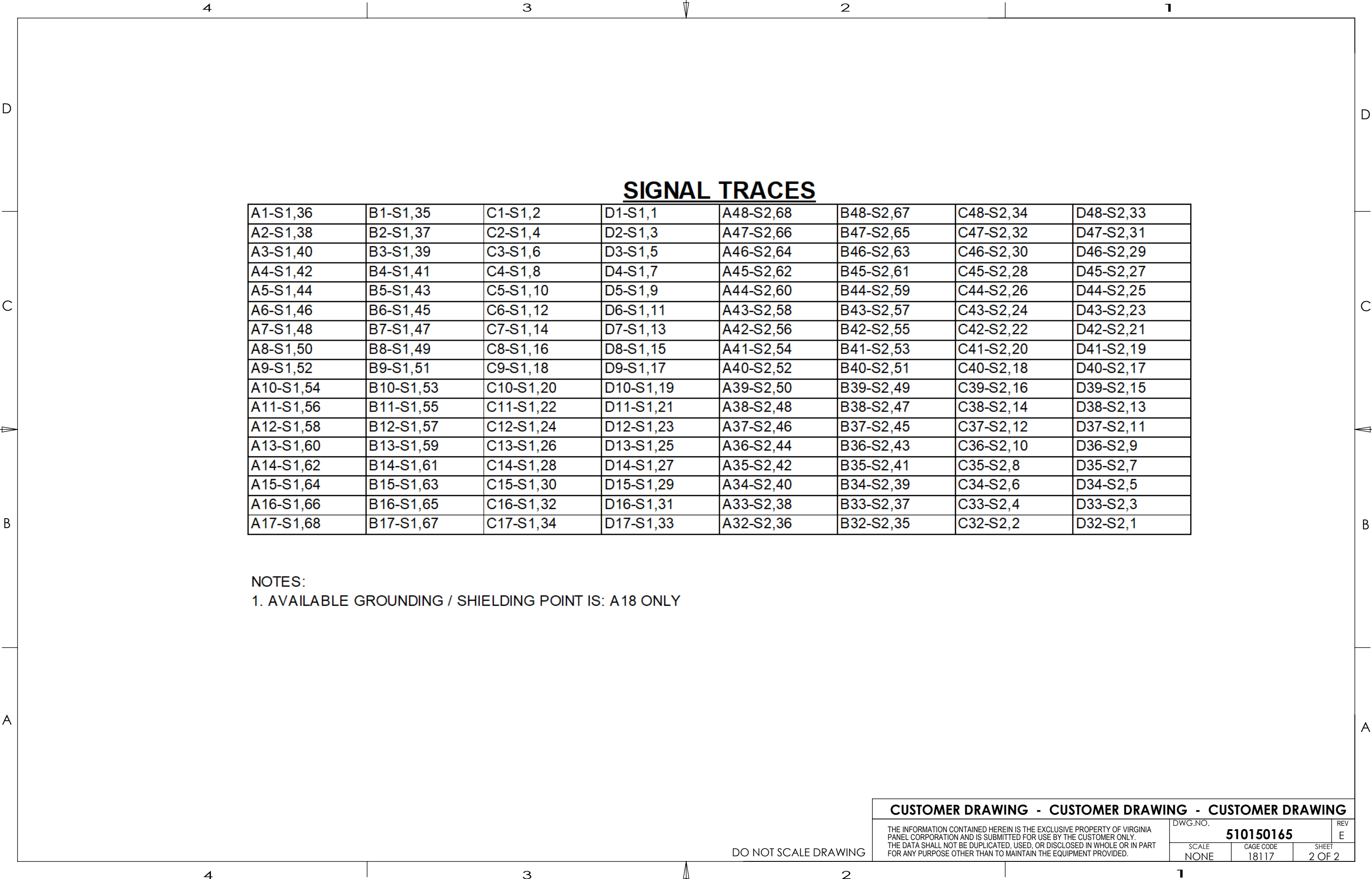
THE INFORMATION CONTAINED HEREIN IS THE EXCLUSIVE PROPERTY OF VIRGINIA PANEL CORPORATION AND IS SUBMITTED FOR USE BY THE CUSTOMER ONLY. THE DATA SHALL NOT BE DUPLICATED, USED, OR DISCLOSED IN WHOLE OR IN PART FOR ANY PURPOSE OTHER THAN TO MAINTAIN THE EQUIPMENT PROVIDED.

REV	DESCRIPTION	DATE	ENGINEER
E	ECN #12391	4/20/22	R HERRON

1. FOR APPLICATION USE AND CARE INFORMATION CONSULT VPC USERS GUIDE @ WWW.VPC.COM  
NOTES:

RELATIVE CONNECTOR POSITIONS AND WIRE ROUTING ARE GENERIC AND MAY VARY WITH PINOUT  
DIMENSIONS ARE SHOWN AS:  
[MILLIMETERS]  
INCHES

CUSTOMER DRAWING		
MOD ITA 192 (2)68 ML SCSI		
DWG.NO.	510150165	REV E
SCALE NONE	CAGE CODE 18117	SHEET 1 OF 2



SIGNAL TRACES

A1-S1,36	B1-S1,35	C1-S1,2	D1-S1,1	A48-S2,68	B48-S2,67	C48-S2,34	D48-S2,33
A2-S1,38	B2-S1,37	C2-S1,4	D2-S1,3	A47-S2,66	B47-S2,65	C47-S2,32	D47-S2,31
A3-S1,40	B3-S1,39	C3-S1,6	D3-S1,5	A46-S2,64	B46-S2,63	C46-S2,30	D46-S2,29
A4-S1,42	B4-S1,41	C4-S1,8	D4-S1,7	A45-S2,62	B45-S2,61	C45-S2,28	D45-S2,27
A5-S1,44	B5-S1,43	C5-S1,10	D5-S1,9	A44-S2,60	B44-S2,59	C44-S2,26	D44-S2,25
A6-S1,46	B6-S1,45	C6-S1,12	D6-S1,11	A43-S2,58	B43-S2,57	C43-S2,24	D43-S2,23
A7-S1,48	B7-S1,47	C7-S1,14	D7-S1,13	A42-S2,56	B42-S2,55	C42-S2,22	D42-S2,21
A8-S1,50	B8-S1,49	C8-S1,16	D8-S1,15	A41-S2,54	B41-S2,53	C41-S2,20	D41-S2,19
A9-S1,52	B9-S1,51	C9-S1,18	D9-S1,17	A40-S2,52	B40-S2,51	C40-S2,18	D40-S2,17
A10-S1,54	B10-S1,53	C10-S1,20	D10-S1,19	A39-S2,50	B39-S2,49	C39-S2,16	D39-S2,15
A11-S1,56	B11-S1,55	C11-S1,22	D11-S1,21	A38-S2,48	B38-S2,47	C38-S2,14	D38-S2,13
A12-S1,58	B12-S1,57	C12-S1,24	D12-S1,23	A37-S2,46	B37-S2,45	C37-S2,12	D37-S2,11
A13-S1,60	B13-S1,59	C13-S1,26	D13-S1,25	A36-S2,44	B36-S2,43	C36-S2,10	D36-S2,9
A14-S1,62	B14-S1,61	C14-S1,28	D14-S1,27	A35-S2,42	B35-S2,41	C35-S2,8	D35-S2,7
A15-S1,64	B15-S1,63	C15-S1,30	D15-S1,29	A34-S2,40	B34-S2,39	C34-S2,6	D34-S2,5
A16-S1,66	B16-S1,65	C16-S1,32	D16-S1,31	A33-S2,38	B33-S2,37	C33-S2,4	D33-S2,3
A17-S1,68	B17-S1,67	C17-S1,34	D17-S1,33	A32-S2,36	B32-S2,35	C32-S2,2	D32-S2,1

NOTES:  
1. AVAILABLE GROUNDING / SHIELDING POINT IS: A18 ONLY

DO NOT SCALE DRAWING

CUSTOMER DRAWING - CUSTOMER DRAWING - CUSTOMER DRAWING

THE INFORMATION CONTAINED HEREIN IS THE EXCLUSIVE PROPERTY OF VIRGINIA PANEL CORPORATION AND IS SUBMITTED FOR USE BY THE CUSTOMER ONLY.  
THE DATA SHALL NOT BE DUPLICATED, USED, OR DISCLOSED IN WHOLE OR IN PART FOR ANY PURPOSE OTHER THAN TO MAINTAIN THE EQUIPMENT PROVIDED.

DWG.NO.

510150165

REV

E

SCALE

NONE

CAGE CODE

18117

SHEET

2 OF 2