

4

3

2

1

DO NOT SCALE DRAWING

THE INFORMATION CONTAINED HEREIN IS THE EXCLUSIVE PROPERTY OF VIRGINIA PANEL CORPORATION AND IS SUBMITTED FOR USE BY THE CUSTOMER ONLY. THE DATA SHALL NOT BE DUPLICATED, USED, OR DISCLOSED IN WHOLE OR IN PART FOR ANY PURPOSE OTHER THAN TO MAINTAIN THE EQUIPMENT PROVIDED. CONSULT WITH VIRGINIA PANEL CORPORATION ENGINEERING IF MORE DETAIL IS REQUIRED.

REVISIONS

REV	DESCRIPTION	DATE	ENGR
J	ECN #12391	4/22/22	R HERRON

D

C

B

A

PIN 68 TYP.

CONNECTOR "V1"

PIN 2 TYP.

PIN 1 TYP.

CONNECTOR "V2"

VIEW OF VHDCI
CONNECTOR
MATING FACE

WWW.VPC.COM 414715307 REV. I

A

A

4. WHEN LOADING PCBs SIDE-BY-SIDE SOLDER TAILS COULD INTERFERE WITH ADJACENT PCBs.

3. TECHNICAL DATA:

CONNECTOR:

CURRENT = .5 AMP @ 30 VAC
TEMP = -55° to 85° C
TERMINATION RESISTANCE = 10 MILLIOHMS
ISULATION RESISTANCE = 500 MEGAOHMS
DWV = 250 VAC

BOARD:

CURRENT = .5 AMP @ 30 VAC

2. MATERIALS:

CONNECTOR:

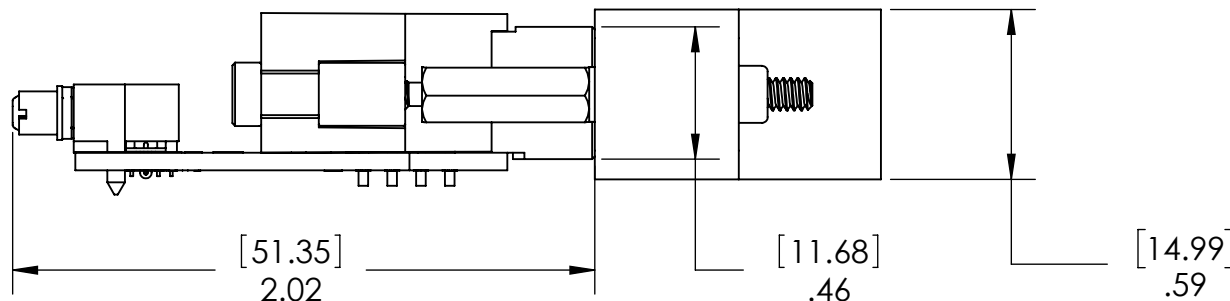
SHELL = STEEL Ni PLATE OVER COPPER
INSULATOR = BLACK LCP
CONTACT = PHOS. BRONZE
CONTACT PLATING = MATING AREA - .00076 MIN GOLD
SOLDER POST - TIN LEAD. LEAD < 0.1% BY WEIGHT
OVER ENTIRE Ni UNDERPLATE

BOARD:

FR-4/21 w/ SOLDERMASK

1. FOR APPLICATION USE & CARE INFORMATION CONSULT VPC USERS GUIDE @WWW.VPC.COM

NOTES:



PIN D1

PIN A1

[142.49]
5.61

PIN D48

PIN A48

VIEW OF VPC ITA MODULE
FRONT (RECEIVER) MATING FACE
P/N 510151117

PIN D1

PIN A1

PIN D48

PIN A48

SECTION A-A
SCALE 3 : 2

VIEW OF BOARD MOUNTED
RIGHT ANGLE HEADER
MATING FACE

CUSTOMER DRAWING

VIRGINIA PANEL CORPORATION
WWW.VPC.COM

MOD ITA 192 CNT
PCB 2-68 PIN VHDCI

DIMENSIONS ARE SHOWN AS:
[MILLIMETERS]
INCHES

SIZE	CAGE CODE	DWG.NO.	REV
C	18117	510151123	J
SCALE: NONE	510151123	12/05/07	SHEET 1 OF 2

4

3

2

1

4

3

2

1

D

C

B

A

SIGNAL TRACES

A1-V1,68	B1-V1,67	C1-V1,34	D1-V1,33	A48-V2,36	B48-V2,35	C48-V2,2	D48-V2,1
A2-V1,66	B2-V1,65	C2-V1,32	D2-V1,31	A47-V2,38	B47-V2,37	C47-V2,4	D47-V2,3
A3-V1,64	B3-V1,63	C3-V1,30	D3-V1,29	A46-V2,40	B46-V2,39	C46-V2,6	D46-V2,5
A4-V1,62	B4-V1,61	C4-V1,28	D4-V1,27	A45-V2,42	B45-V2,41	C45-V2,8	D45-V2,7
A5-V1,60	B5-V1,59	C5-V1,26	D5-V1,25	A44-V2,44	B44-V2,43	C44-V2,10	D44-V2,9
A6-V1,58	B6-V1,57	C6-V1,24	D6-V1,23	A43-V2,46	B43-V2,45	C43-V2,12	D43-V2,11
A7-V1,56	B7-V1,55	C7-V1,22	D7-V1,21	A42-V2,48	B42-V2,47	C42-V2,14	D42-V2,13
A8-V1,54	B8-V1,53	C8-V1,20	D8-V1,19	A41-V2,50	B41-V2,49	C41-V2,16	D41-V2,15
A9-V1,52	B9-V1,51	C9-V1,18	D9-V1,17	A40-V2,52	B40-V2,51	C40-V2,18	D40-V2,17
A10-V1,50	B10-V1,49	C10-V1,16	D10-V1,15	A39-V2,54	B39-V2,53	C39-V2,20	D39-V2,19
A11-V1,48	B11-V1,47	C11-V1,14	D11-V1,13	A38-V2,56	B38-V2,55	C38-V2,22	D38-V2,21
A12-V1,46	B12-V1,45	C12-V1,12	D12-V1,11	A37-V2,58	B37-V2,57	C37-V2,24	D37-V2,23
A13-V1,44	B13-V1,43	C13-V1,10	D13-V1,9	A36-V2,60	B36-V2,59	C36-V2,26	D36-V2,25
A14-V1,42	B14-V1,41	C14-V1,8	D14-V1,7	A35-V2,62	B35-V2,61	C35-V2,28	D35-V2,27
A15-V1,40	B15-V1,39	C15-V1,6	D15-V1,5	A34-V2,64	B34-V2,63	C34-V2,30	D34-V2,29
A16-V1,38	B16-V1,37	C16-V1,4	D16-V1,3	A33-V2,66	B33-V2,65	C33-V2,32	D33-V2,31
A17-V1,36	B17-V1,35	C17-V1,2	D17-V1,1	A32-V2,68	B32-V2,67	C32-V2,34	D32-V2,33

NOTES:

1. AVAILABLE GROUNDING / SHIELDING POINTS ARE : A18-A31, B18-B31, C18-C31, D18-D31

DO NOT SCALE DRAWING

CUSTOMER DRAWING - CUSTOMER DRAWING - CUSTOMER DRAWING

THE INFORMATION CONTAINED HEREIN IS THE EXCLUSIVE PROPERTY OF VIRGINIA PANEL CORPORATION AND IS SUBMITTED FOR USE BY THE CUSTOMER ONLY. THE DATA SHALL NOT BE DUPLICATED, USED, OR DISCLOSED IN WHOLE OR IN PART FOR ANY PURPOSE OTHER THAN TO MAINTAIN THE EQUIPMENT PROVIDED.

SIZE
C

CAGE CODE
18117

DWG.NO.
510151123

REV
J

SCALE: NONE510151123SHEET 2 OF 2

4

3

2

1