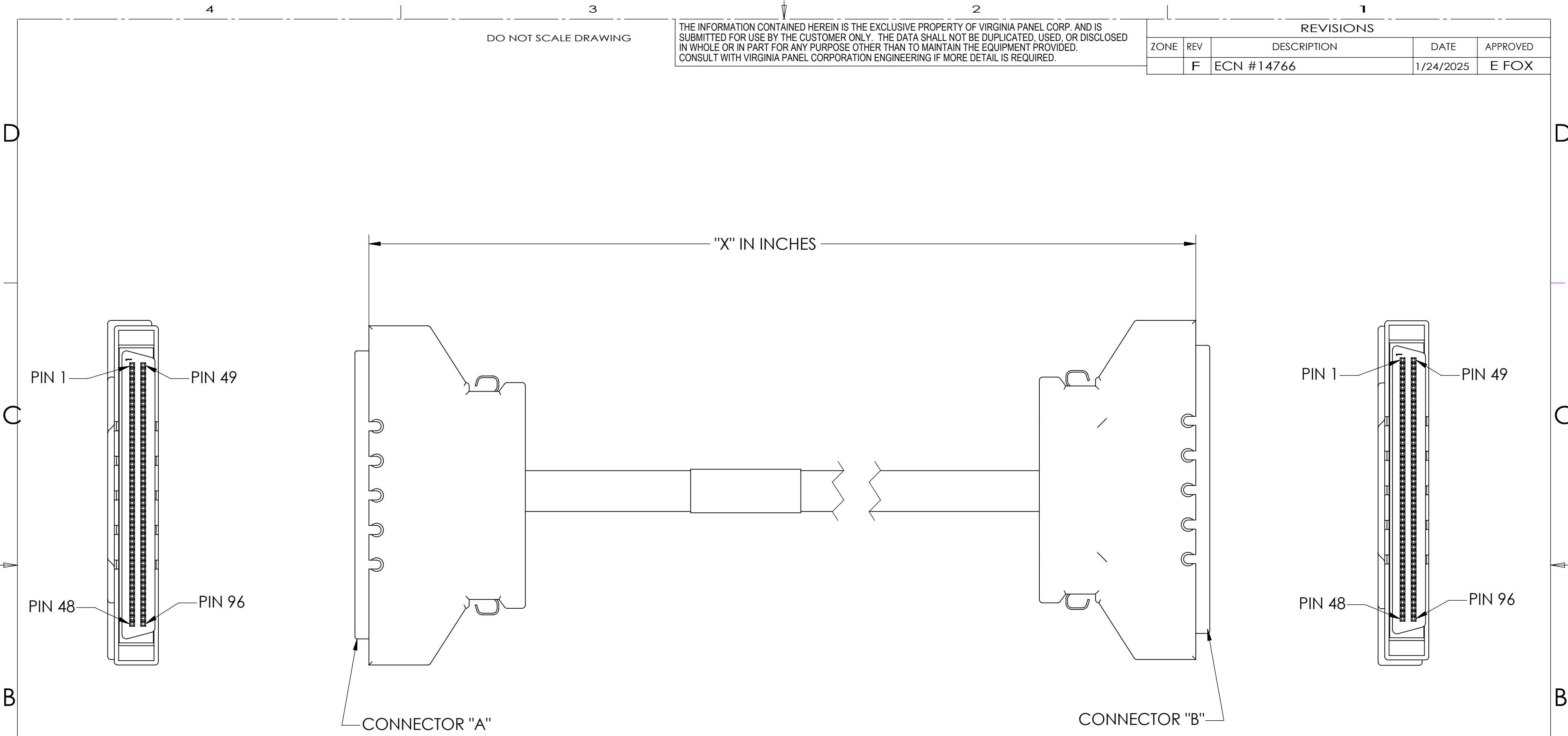


DO NOT SCALE DRAWING

THE INFORMATION CONTAINED HEREIN IS THE EXCLUSIVE PROPERTY OF VIRGINIA PANEL CORP. AND IS SUBMITTED FOR USE BY THE CUSTOMER ONLY. THE DATA SHALL NOT BE DUPLICATED, USED, OR DISCLOSED IN WHOLE OR IN PART FOR ANY PURPOSE OTHER THAN TO MAINTAIN THE EQUIPMENT PROVIDED. CONSULT WITH VIRGINIA PANEL CORPORATION ENGINEERING IF MORE DETAIL IS REQUIRED.

REVISIONS				
ZONE	REV	DESCRIPTION	DATE	APPROVED
	F	ECN #14766	1/24/2025	E FOX



PART NUMBER	CONN. "A" TYPE	BACKSHELL STYLE	CONN. "B" TYPE	BACKSHELL STYLE	"X" LENGTH
515109007	96 PIN FML SCSI	SPRING LATCH	96 PIN FML SCSI	SPRING LATCH	18.00 [457.20]
515109008	96 PIN FML SCSI	SPRING LATCH	96 PIN FML SCSI	SPRING LATCH	36.00 [914.4]
515109160	96 PIN FML SCSI	SPRING LATCH	96 PIN FML SCSI	SPRING LATCH	60.00 [1524]
515109253	96 PIN FML SCSI	SPRING LATCH	96 PIN FML SCSI	SPRING LATCH	23.00 [584.20]
515109009	96 PIN FML SCSI	SPRING LATCH	96 PIN FML SCSI	SPRING LATCH	72.00 [1828.8]
515109159	96 PIN FML SCSI	SPRING LATCH	96 PIN FML SCSI	SPRING LATCH	48.00 [1219.2]
515109259	96 PIN FML SCSI	SPRING LATCH	96 PIN FML SCSI	SPRING LATCH	100.00 [2540]
515109391	96 PIN FML SCSI	SPRING LATCH	96 PIN FML SCSI	SPRING LATCH	108.00 [2743.2]

3. BACKSHELLS MAY VARY  
 2. TECHNICAL DATA:  
 WIRE:  
 100 CONDUCTOR - 50 TWISTED PAIR 28 AWG WITH OVERALL SHIELDING  
 NOMINAL DIFF. IMP. (Ohms) = 100±15%  
 INSULATION = FLAME RETARDANT CELLULAR POLYOLEFIN  
 JACKET = BLACK PVC  
 MIN. BEND RAD. = 1.5 INCHES  
 CONNECTORS:  
 CURRENT = 1 AMP @ 30 VAC  
 TEMP. = -55° to 105° C  
 TERMINATION RESISTANCE = 25 MILLIOHMS  
 INSULATION RESISTANCE = 1000 MEGAOHMS  
 DWV = 500 VAC

1. FOR APPLICATION USE AND CARE INFORMATION CONSULT VPC USERS MANUAL @ WWW.VPC.COM  
 NOTES:

**CUSTOMER DRAWING - CUSTOMER DRAWING**

SOLIDWORKS DRAWING FILE	DIMENSIONS ARE SHOWN AS:		SIGNATURES		DATE	<b>VIRGINIA PANEL CORPORATION</b> WWW.VPC.COM		
	(millimeters) INCHES		DR	R. HERRON	9/17/03			
	REMOVE BURRS, BREAK SHARP EDGES		CHK			<b>QP PCB STD CABLE ASSEMBLY</b>		
	MATERIAL		ENG					
	FINISH		PROD					
		ASSY			SIZE	FSCM NO.	DWG. NO.	REV
		Q A			C	18117	515109007	F
		APPD			SCALE: NONE	1/31/2020	515109007	SHEET 1 OF 2

DO NOT SCALE DRAWING

THE INFORMATION CONTAINED HEREIN IS THE EXCLUSIVE PROPERTY OF VIRGINIA PANEL CORP. AND IS SUBMITTED FOR USE BY THE CUSTOMER ONLY. THE DATA SHALL NOT BE DUPLICATED, USED, OR DISCLOSED IN WHOLE OR IN PART FOR ANY PURPOSE OTHER THAN TO MAINTAIN THE EQUIPMENT PROVIDED. CONSULT WITH VIRGINIA PANEL CORPORATION ENGINEERING IF MORE DETAIL IS REQUIRED.

REVISIONS				
ZONE	REV	DESCRIPTION	DATE	APPROVED
	F	ECN #14766	1/24/2025	E FOX

## WIRE CHART

CONNECTOR		
A	B	
1	1	TWISTED PAIR #1
2	2	
3	3	TWISTED PAIR #2
4	4	
5	5	TWISTED PAIR #3
6	6	
7	7	TWISTED PAIR #4
8	8	
9	9	TWISTED PAIR #5
10	10	
11	11	TWISTED PAIR #6
12	12	
13	13	TWISTED PAIR #7
14	14	
15	15	TWISTED PAIR #8
16	16	
17	17	TWISTED PAIR #9
18	18	
19	19	TWISTED PAIR #10
20	20	
21	21	TWISTED PAIR #11
22	22	
23	23	TWISTED PAIR #12
24	24	
25	25	TWISTED PAIR #13
26	26	
27	27	TWISTED PAIR #14
28	28	
29	29	TWISTED PAIR #15
30	30	
31	31	TWISTED PAIR #16
32	32	

CONNECTOR		
A	B	
33	33	TWISTED PAIR #17
34	34	
35	35	TWISTED PAIR #18
36	36	
37	37	TWISTED PAIR #19
38	38	
39	39	TWISTED PAIR #20
40	40	
41	41	TWISTED PAIR #21
42	42	
43	43	TWISTED PAIR #22
44	44	
45	45	TWISTED PAIR #23
46	46	
47	47	TWISTED PAIR #24
48	48	
49	49	TWISTED PAIR #25
50	50	
51	51	TWISTED PAIR #26
52	52	
53	53	TWISTED PAIR #27
54	54	
55	55	TWISTED PAIR #28
56	56	
57	57	TWISTED PAIR #29
58	58	
59	59	TWISTED PAIR #30
60	60	
61	61	TWISTED PAIR #31
62	62	
63	63	TWISTED PAIR #32
64	64	

CONNECTOR		
A	B	
65	65	TWISTED PAIR #33
66	66	
67	67	TWISTED PAIR #34
68	68	
69	69	TWISTED PAIR #35
70	70	
71	71	TWISTED PAIR #36
72	72	
73	73	TWISTED PAIR #37
74	74	
75	75	TWISTED PAIR #38
76	76	
77	77	TWISTED PAIR #39
78	78	
79	79	TWISTED PAIR #40
80	80	
81	81	TWISTED PAIR #41
82	82	
83	83	TWISTED PAIR #42
84	84	
85	85	TWISTED PAIR #43
86	86	
87	87	TWISTED PAIR #44
88	88	
89	89	TWISTED PAIR #45
90	90	
91	91	TWISTED PAIR #46
92	92	
93	93	TWISTED PAIR #47
94	94	
95	95	TWISTED PAIR #48
96	96	

PAIRS 49 & 50 NOT USED

CUSTOMER DRAWING - CUSTOMER DRAWING									
SOLIDWORKS DRAWING FILE	DIMENSIONS ARE SHOWN AS:		SIGNATURES		DATE	<b>VIRGINIA PANEL CORPORATION</b> WWW.VPC.COM			
	(millimeters)		DR	R. HERRON	9/17/03				
	INCHES		CHK			QP PCB STD CABLE ASSEMBLY			
	REMOVE BURRS, BREAK SHARP EDGES		ENG						
	MATERIAL		PROD						
FINISH		ASSY			SIZE	FSCM NO.	DWG. NO.	REV	
		QA			C	18117	515109007	F	
		APPD			SCALE: NONE	1/31/2020	515109007	SHEET 2 OF 2	