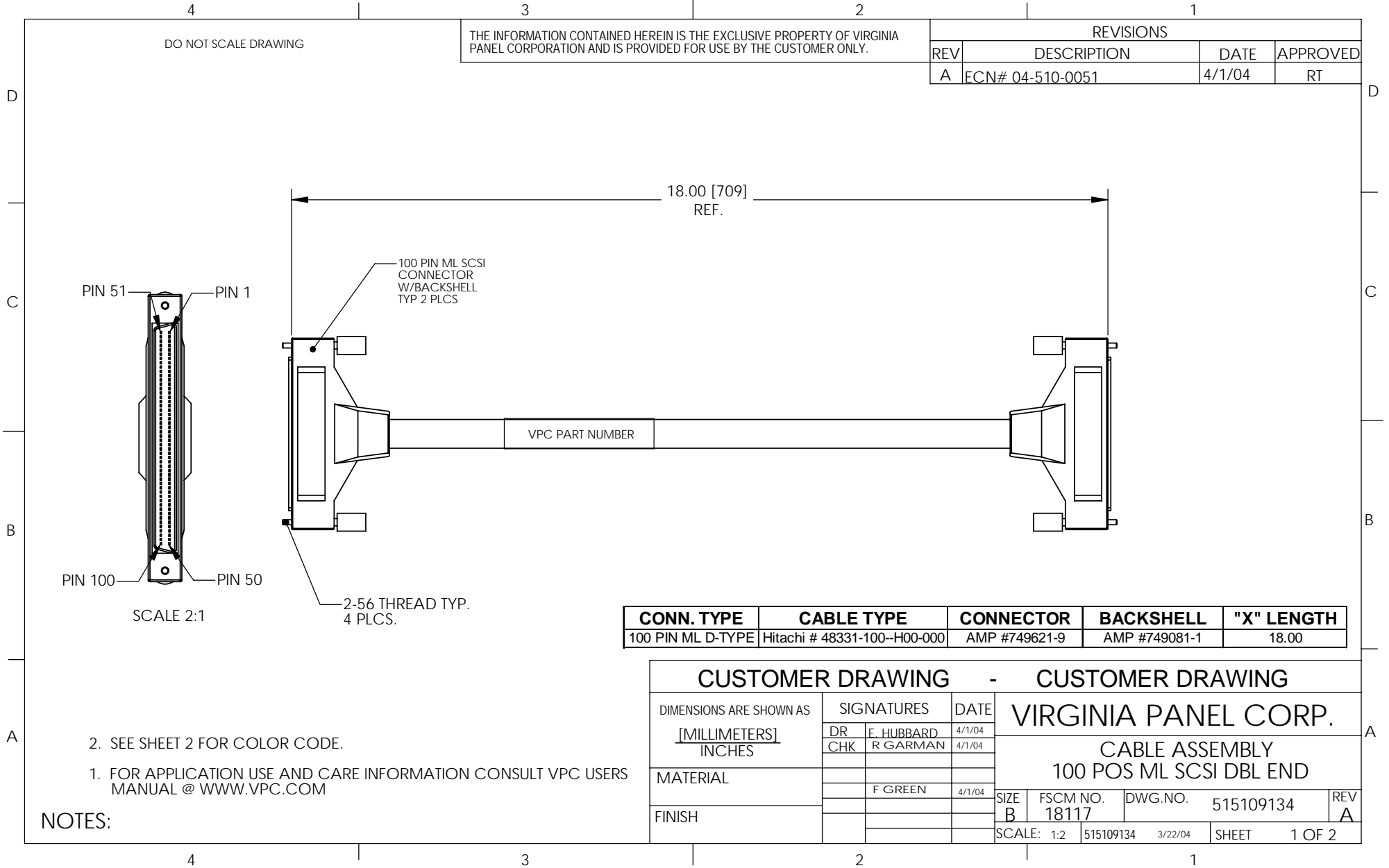


DO NOT SCALE DRAWING

THE INFORMATION CONTAINED HEREIN IS THE EXCLUSIVE PROPERTY OF VIRGINIA PANEL CORPORATION AND IS PROVIDED FOR USE BY THE CUSTOMER ONLY.

REVISIONS			
REV	DESCRIPTION	DATE	APPROVED
A	ECN# 04-510-0051	4/1/04	RT



CONN. TYPE	CABLE TYPE	CONNECTOR	BACKSHELL	"X" LENGTH
100 PIN ML D-TYPE	Hitachi # 48331-100-H00-000	AMP #749621-9	AMP #749081-1	18.00

CUSTOMER DRAWING - CUSTOMER DRAWING							
DIMENSIONS ARE SHOWN AS [MILLIMETERS] INCHES	SIGNATURES DR E. HUBBARD CHK R. GARMAN	DATE 4/1/04 4/1/04	VIRGINIA PANEL CORP. CABLE ASSEMBLY 100 POS ML SCSI DBL END				
MATERIAL	F GREEN	4/1/04					
FINISH			<table border="1"> <tr> <td>SIZE B</td> <td>FSCM NO. 18117</td> <td>DWG. NO. 515109134</td> <td>REV A</td> </tr> </table>	SIZE B	FSCM NO. 18117	DWG. NO. 515109134	REV A
SIZE B	FSCM NO. 18117	DWG. NO. 515109134	REV A				
SCALE: 1:2		515109134 3/22/04	SHEET 1 OF 2				

2. SEE SHEET 2 FOR COLOR CODE.

1. FOR APPLICATION USE AND CARE INFORMATION CONSULT VPC USERS MANUAL @ WWW.VPC.COM

NOTES:

4
DO NOT SCALE DRAWING

3
THE INFORMATION CONTAINED HEREIN IS THE EXCLUSIVE PROPERTY OF VIRGINIA
PANEL CORPORATION AND IS PROVIDED FOR USE BY THE CUSTOMER ONLY.

2
1

REVISIONS			
REV	DESCRIPTION	DATE	APPROVED
A	ECN# 04-510-0051	4/1/04	RT

TABLE #4

PIN #	COLOR	PAIR #	PIN #	COLOR	PAIR #	PIN #	COLOR	PAIR #
1	WHT/TAN	1	35	BRN/PNK	18	69	ORN/GRY	34
2	TAN/WHT		36	PNK/BRN		70	GRY/ORN	
3	WHT/BRN	2	37	BRN/ORN	19	71	YEL/GRN	36
4	BRN/WHT		38	ORN/BRN		72	GRN/YEL	
5	WHT/PNK	3	39	BRN/YEL	20	73	YEL/BLU	37
6	PNK/WHT		40	YEL/BRN		74	BLU/YEL	
7	WHT/ORN	4	41	BRN/GRN	21	75	YEL/VIO	38
8	ORN/WHT		42	GRN/BRN		76	VIO/YEL	
9	WHT/YEL	5	43	BRN/BLU	22	77	YEL/GRY	39
10	YEL/WHT		44	BLU/BRN		78	GRY/YRL	
11	WHT/GRN	6	45	BRN/VIO	23	79	GRN/BLU	40
12	GRN/WHT		46	VIO/BRN		80	BLU/GRN	
13	WHT/BLU	7	47	BRN/GRY	24	81	GRN/VIO	41
14	BLU/WHT		48	GRY/BRN		82	VIO/GRN	
15	WHT/VIO	8	49	PNK/ORN	25	83	GRN/GRY	42
16	VIO/WHT		50	ORN/PNK		84	GRY/GRN	
17	WHT/GRY	9	51	PNK/YEL	26	85	BLU/VIO	43
18	GRY/WHT		52	YEL/PNK		86	VIO/BLU	
19	TAN/BRN	10	53	PNK/GRN	27	87	BLU/GRY	44
20	BRN/TAN		54	GRN/PNK		88	GRY/BLU	
21	TAN/PNK	11	55	PNK/BLU	28	89	VIO/GRY	45
22	PNK/TAN		56	BLU/PNK		90	GRY/VIO	
23	TAN/ORN	12	57	PNK/VIO	29	91	WHT	46
24	ORN/TAN		58	VIO/PNK		92	TAN	
25	TAN/YEL	13	59	PNK/GRY	30	93	GRY	47
26	YEL/TAN		60	GRY/PNK		94	BRN	
27	TAN/GRN	14	61	ORN/YEL	31	95	BLU	48
28	GRN/TAN		62	YEL/ORN		96	PNK	
29	TAN/BLU	15	63	ORN/GRN	32	97	VIO	49
30	BLU/TAN		64	GRN/ORN		98	ORN	
31	TAN/VIO	16	65	ORN/BLU	33	99	GRN	50
32	VIO/TAN		66	BLU/ORN		100	YEL	
33	TAN/GRY	17	67	ORN/VIO	34			
34	GRY/TAN		68	VIO/ORN				

A

CUSTOMER DRAWING - CUSTOMER DRAWING									
DIMENSIONS ARE SHOWN AS			SIGNATURES		DATE	VIRGINIA PANEL CORP.			
[MILLIMETERS] INCHES			DR	E. HUBBARD	4/1/04				
MATERIAL			CHK	R. GARMAN	4/1/04	CABLE ASSEMBLY 100 POS ML SCSI DBL END			
			FINISH						
SIZE	FSCM NO.	DWG. NO.				515109134		REV	
B	18117				A				
SCALE: 1:2		515109133	3/22/04	SHEET	2 OF 2				

4

3

2

1