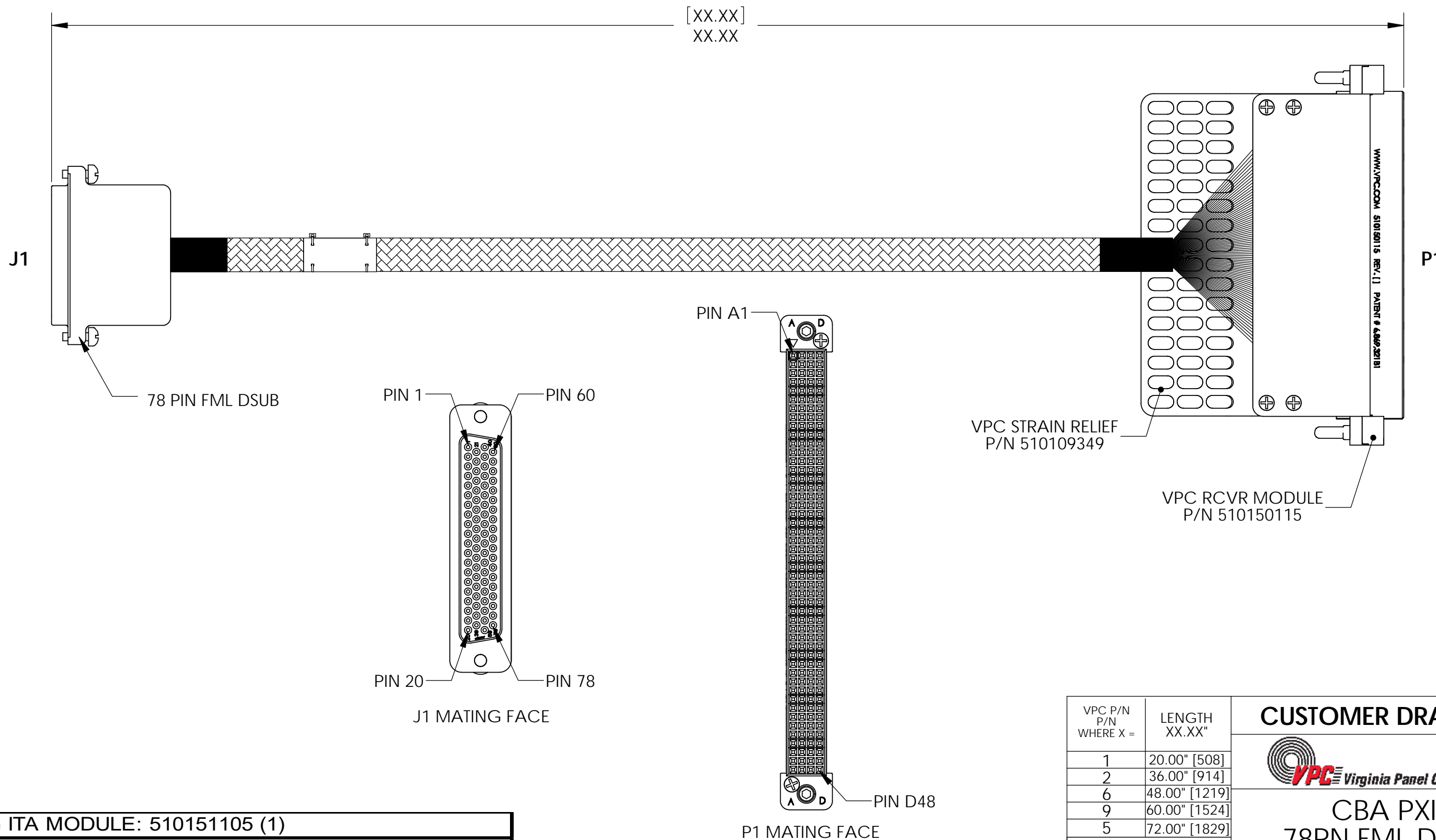


DO NOT SCALE DRAWING

THE INFORMATION CONTAINED HEREIN IS THE EXCLUSIVE PROPERTY OF VIRGINIA PANEL CORPORATION AND IS SUBMITTED FOR USE BY THE CUSTOMER ONLY. THE DATA SHALL NOT BE DUPLICATED, USED, OR DISCLOSED IN WHOLE OR IN PART FOR ANY PURPOSE OTHER THAN TO MAINTAIN THE EQUIPMENT PROVIDED. CONSULT WITH VIRGINIA PANEL CORPORATION ENGINEERING IF MORE DETAIL IS REQUIRED.

REV	DESCRIPTION	DATE	ENGINEER
G	ECN #11455	5/6/2021	RF



**MATING ITA MODULE: 510151105 (1)**  
**MATING ITA PATCHCORDS: 7-121924000-036 (78)**

1. FOR APPLICATION USE AND CARE INFORMATION CONSULT VPC USERS GUIDE @ WWW.VPC.COM

NOTES:

VPC P/N P/N WHERE X =	LENGTH XX.XX"
1	20.00" [508]
2	36.00" [914]
6	48.00" [1219]
9	60.00" [1524]
5	72.00" [1829]

RELATIVE CONNECTOR POSITIONS AND WIRE ROUTING ARE GENERIC AND MAY VARY WITH PINOUT

DIMENSIONS ARE SHOWN AS:  
**[MILLIMETERS]**  
**INCHES**

**CUSTOMER DRAWING**

**CBA PXI  
78PN FML D QP**

DWG.NO. **540034010X40** REV **G**

SIZE B	SCALE NONE	CAGE CODE 18117	SHEET 1 OF 2
-----------	---------------	--------------------	-----------------

Run #	From Location (Conn - Pin)	Contact	Wire AWG	Wire/Patchcord P/N	Wire Color	To Location (Conn - Pin)	Contact	Notes
1	P1-A1	610138216	24	7-124924548-XXX	WHT	J1-60	960058	
2	P1-B1	610138216	24	7-124924548-XXX	WHT	J1-40	960058	
3	P1-C1	610138216	24	7-124924548-XXX	WHT	J1-21	960058	
4	P1-D1	610138216	24	7-124924548-XXX	WHT	J1-1	960058	
5	P1-A2	610138216	24	7-124924548-XXX	WHT	J1-61	960058	
6	P1-B2	610138216	24	7-124924548-XXX	WHT	J1-41	960058	
7	P1-C2	610138216	24	7-124924548-XXX	WHT	J1-22	960058	
8	P1-D2	610138216	24	7-124924548-XXX	WHT	J1-2	960058	
9	P1-A3	610138216	24	7-124924548-XXX	WHT	J1-62	960058	
10	P1-B3	610138216	24	7-124924548-XXX	WHT	J1-42	960058	
11	P1-C3	610138216	24	7-124924548-XXX	WHT	J1-23	960058	
12	P1-D3	610138216	24	7-124924548-XXX	WHT	J1-3	960058	
13	P1-A4	610138216	24	7-124924548-XXX	WHT	J1-63	960058	
14	P1-B4	610138216	24	7-124924548-XXX	WHT	J1-43	960058	
15	P1-C4	610138216	24	7-124924548-XXX	WHT	J1-24	960058	
16	P1-D4	610138216	24	7-124924548-XXX	WHT	J1-4	960058	
17	P1-A5	610138216	24	7-124924548-XXX	WHT	J1-64	960058	
18	P1-B5	610138216	24	7-124924548-XXX	WHT	J1-44	960058	
19	P1-C5	610138216	24	7-124924548-XXX	WHT	J1-25	960058	
20	P1-D5	610138216	24	7-124924548-XXX	WHT	J1-5	960058	
21	P1-A6	610138216	24	7-124924548-XXX	WHT	J1-65	960058	
22	P1-B6	610138216	24	7-124924548-XXX	WHT	J1-45	960058	
23	P1-C6	610138216	24	7-124924548-XXX	WHT	J1-26	960058	
24	P1-D6	610138216	24	7-124924548-XXX	WHT	J1-6	960058	
25	P1-A7	610138216	24	7-124924548-XXX	WHT	J1-66	960058	
26	P1-B7	610138216	24	7-124924548-XXX	WHT	J1-46	960058	
27	P1-C7	610138216	24	7-124924548-XXX	WHT	J1-27	960058	
28	P1-D7	610138216	24	7-124924548-XXX	WHT	J1-7	960058	
29	P1-A8	610138216	24	7-124924548-XXX	WHT	J1-67	960058	
30	P1-B8	610138216	24	7-124924548-XXX	WHT	J1-47	960058	
31	P1-C8	610138216	24	7-124924548-XXX	WHT	J1-28	960058	
32	P1-D8	610138216	24	7-124924548-XXX	WHT	J1-8	960058	
33	P1-A9	610138216	24	7-124924548-XXX	WHT	J1-68	960058	
34	P1-B9	610138216	24	7-124924548-XXX	WHT	J1-48	960058	
35	P1-C9	610138216	24	7-124924548-XXX	WHT	J1-29	960058	
36	P1-D9	610138216	24	7-124924548-XXX	WHT	J1-9	960058	
37	P1-A10	610138216	24	7-124924548-XXX	WHT	J1-69	960058	
38	P1-B10	610138216	24	7-124924548-XXX	WHT	J1-49	960058	
39	P1-C10	610138216	24	7-124924548-XXX	WHT	J1-30	960058	

Run #	From Location (Conn - Pin)	Contact	Wire AWG	Wire/Patchcord P/N	Wire Color	To Location (Conn - Pin)	Contact	Notes
40	P1-D10	610138216	24	7-124924548-XXX	WHT	J1-10	960058	
41	P1-A11	610138216	24	7-124924548-XXX	WHT	J1-70	960058	
42	P1-B11	610138216	24	7-124924548-XXX	WHT	J1-50	960058	
43	P1-C11	610138216	24	7-124924548-XXX	WHT	J1-31	960058	
44	P1-D11	610138216	24	7-124924548-XXX	WHT	J1-11	960058	
45	P1-A12	610138216	24	7-124924548-XXX	WHT	J1-71	960058	
46	P1-B12	610138216	24	7-124924548-XXX	WHT	J1-51	960058	
47	P1-C12	610138216	24	7-124924548-XXX	WHT	J1-32	960058	
48	P1-D12	610138216	24	7-124924548-XXX	WHT	J1-12	960058	
49	P1-A13	610138216	24	7-124924548-XXX	WHT	J1-72	960058	
50	P1-B13	610138216	24	7-124924548-XXX	WHT	J1-52	960058	
51	P1-C13	610138216	24	7-124924548-XXX	WHT	J1-33	960058	
52	P1-D13	610138216	24	7-124924548-XXX	WHT	J1-13	960058	
53	P1-A14	610138216	24	7-124924548-XXX	WHT	J1-73	960058	
54	P1-B14	610138216	24	7-124924548-XXX	WHT	J1-53	960058	
55	P1-C14	610138216	24	7-124924548-XXX	WHT	J1-34	960058	
56	P1-D14	610138216	24	7-124924548-XXX	WHT	J1-14	960058	
57	P1-A15	610138216	24	7-124924548-XXX	WHT	J1-74	960058	
58	P1-B15	610138216	24	7-124924548-XXX	WHT	J1-54	960058	
59	P1-C15	610138216	24	7-124924548-XXX	WHT	J1-35	960058	
60	P1-D15	610138216	24	7-124924548-XXX	WHT	J1-15	960058	
61	P1-A16	610138216	24	7-124924548-XXX	WHT	J1-75	960058	
62	P1-B16	610138216	24	7-124924548-XXX	WHT	J1-55	960058	
63	P1-C16	610138216	24	7-124924548-XXX	WHT	J1-36	960058	
64	P1-D16	610138216	24	7-124924548-XXX	WHT	J1-16	960058	
65	P1-A17	610138216	24	7-124924548-XXX	WHT	J1-76	960058	
66	P1-B17	610138216	24	7-124924548-XXX	WHT	J1-56	960058	
67	P1-C17	610138216	24	7-124924548-XXX	WHT	J1-37	960058	
68	P1-D17	610138216	24	7-124924548-XXX	WHT	J1-17	960058	
69	P1-A18	610138216	24	7-124924548-XXX	WHT	J1-77	960058	
70	P1-B18	610138216	24	7-124924548-XXX	WHT	J1-57	960058	
71	P1-C18	610138216	24	7-124924548-XXX	WHT	J1-38	960058	
72	P1-D18	610138216	24	7-124924548-XXX	WHT	J1-18	960058	
73	P1-A19	610138216	24	7-124924548-XXX	WHT	J1-78	960058	
74	P1-B19	610138216	24	7-124924548-XXX	WHT	J1-58	960058	
75	P1-C19	610138216	24	7-124924548-XXX	WHT	J1-39	960058	
76	P1-D19	610138216	24	7-124924548-XXX	WHT	J1-19	960058	
77	P1-C20	610138216	24	7-124924548-XXX	WHT	J1-59	960058	
78	P1-D20	610138216	24	7-124924548-XXX	WHT	J1-20	960058	

**CUSTOMER DRAWING - CUSTOMER DRAWING - CUSTOMER DRAWING**

THE INFORMATION CONTAINED HEREIN IS THE EXCLUSIVE PROPERTY OF VIRGINIA PANEL CORPORATION AND IS SUBMITTED FOR USE BY THE CUSTOMER ONLY. THE DATA SHALL NOT BE DUPLICATED, USED, OR DISCLOSED IN WHOLE OR IN PART FOR ANY PURPOSE OTHER THAN TO MAINTAIN THE EQUIPMENT PROVIDED.

DWG.NO.		540034010X40		REV	G
SIZE	SCALE	CAGE CODE	SHEET		
B	NONE	18117	2 OF 2		

DO NOT SCALE DRAWING