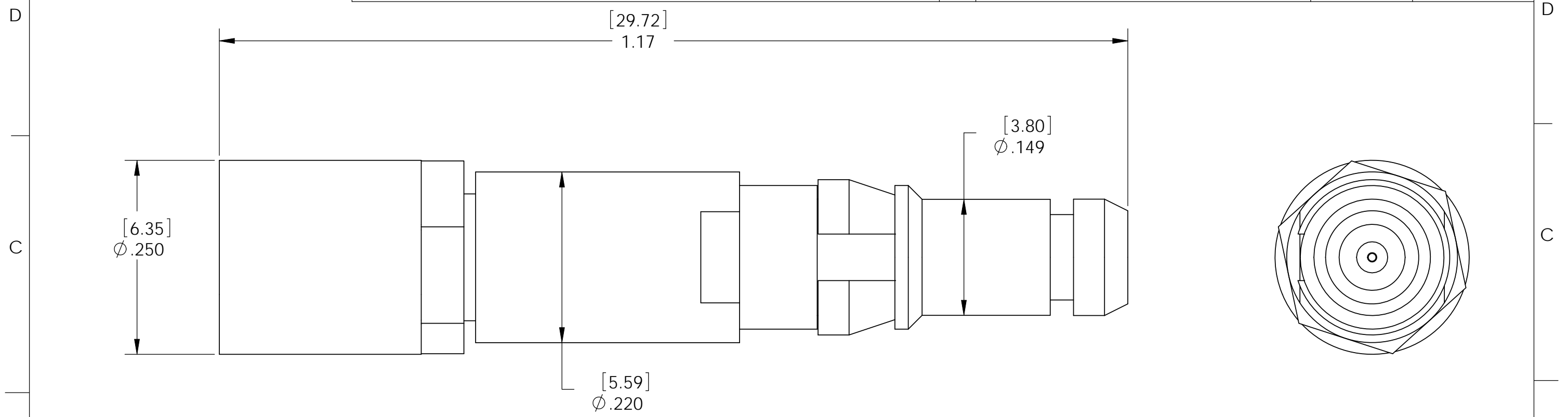


DO NOT SCALE DRAWING

THE INFORMATION CONTAINED HEREIN IS THE EXCLUSIVE PROPERTY OF VIRGINIA PANEL CORPORATION AND IS SUBMITTED FOR USE BY THE CUSTOMER ONLY. THE DATA SHALL NOT BE DUPLICATED, USED, OR DISCLOSED IN WHOLE OR IN PART FOR ANY PURPOSE OTHER THAN TO MAINTAIN THE EQUIPMENT PROVIDED. CONSULT WITH VIRGINIA PANEL CORPORATION ENGINEERING IF MORE DETAIL IS REQUIRED.

REVISIONS			
REV	DESCRIPTION	DATE	ENGR
A	ORIGINAL RELEASE - ECN #	5/8/01	R GARMAN



ELECTRICAL SPECIFICATIONS:

IMPEDANCE: 50 OHMS

CURRENT: 5 AMPS

BANDWIDTH: UP TP 26 GHz DC

RESISTANCE: CENTER 5 MILLIOHMS
OUTER 3 MILLIOHMS

VSWR: 1.15 + .01 x (F) GHz

INSERTION LOSS: .06 x SQUARE ROOT (F) GHz

1. FOR APPLICATION USE AND CARE INFORMATION CONSULT VPC USERS GUIDE @ WWW.VPC.COM
NOTES:

CUSTOMER DRAWING

VIRGINIA PANEL CORPORATION
WWW.VPC.COM

CNT CX ITA 50OHM F/RG142&223

DIMENSIONS ARE SHOWN AS: [MILLIMETERS] INCHES	SIZE	CAGE CODE	DWG.NO.	REV
	B	18117	610102117	A
SCALE: 8:1		610102117	5/8/01	SHEET 2 OF 2