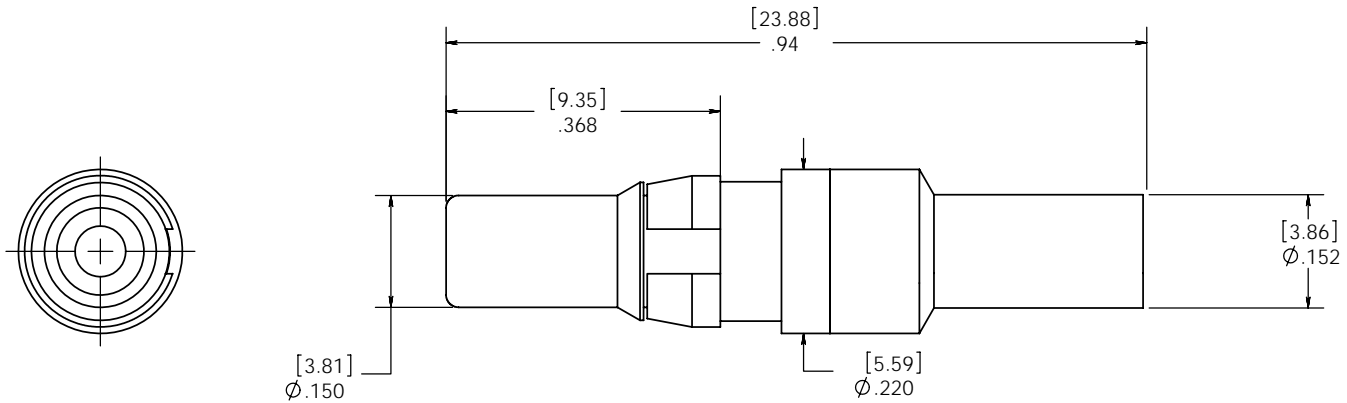


DO NOT SCALE DRAWING

THE INFORMATION CONTAINED HEREIN IS THE EXCLUSIVE PROPERTY OF VIRGINIA PANEL CORPORATION AND IS SUBMITTED FOR USE BY THE CUSTOMER ONLY. THE DATA SHALL NOT BE DUPLICATED, USED, OR DISCLOSED IN WHOLE OR IN PART FOR ANY PURPOSE OTHER THAN TO MAINTAIN THE EQUIPMENT PROVIDED. CONSULT WITH VIRGINIA PANEL CORPORATION ENGINEERING IF MORE DETAIL IS REQUIRED.

| REVISIONS | | | |
|-----------|--------------------------|---------|----------|
| REV | DESCRIPTION | DATE | ENGR |
| A | ORIGINAL RELEASE - ECN # | 12/6/00 | R GARMAN |



ELECTRICAL SPECIFICATIONS:
 INPEDANCE: 75 OHMS
 VOLTAGE RATING: 1000 V RMS
 CURRENT RATING: 3.5 AMPS.
 BANDWIDTH: 2 GHz DC
 RESISTANCE: CENTER - 5 MILLIOHMS
 OUTER - 3 MILLIOHMS
 INSERTION LOSS: 0.5 DB MAXIUM

| | | | |
|--|--|--|--|
| CUSTOMER DRAWING | | | |
| VIRGINIA PANEL CORPORATION WWW.VPC.COM | | | |
| CONTACT ITA 75 OHM F/RG-179 | | | |

1. FOR APPLICATION USE AND CARE INFORMATION CONSULT VPC USERS GUIDE @ WWW.VPC.COM
 NOTES:

| | | | | |
|--------------------------|------------|------------|-----------|--------------|
| DIMENSIONS ARE SHOWN AS: | SIZE | CAGE CODE | DWG.NO. | REV |
| [MILLIMETERS] | B | 18117 | 610103169 | A |
| INCHES | SCALE: 6:1 | 610103169a | 12/6/00 | SHEET 2 OF 2 |