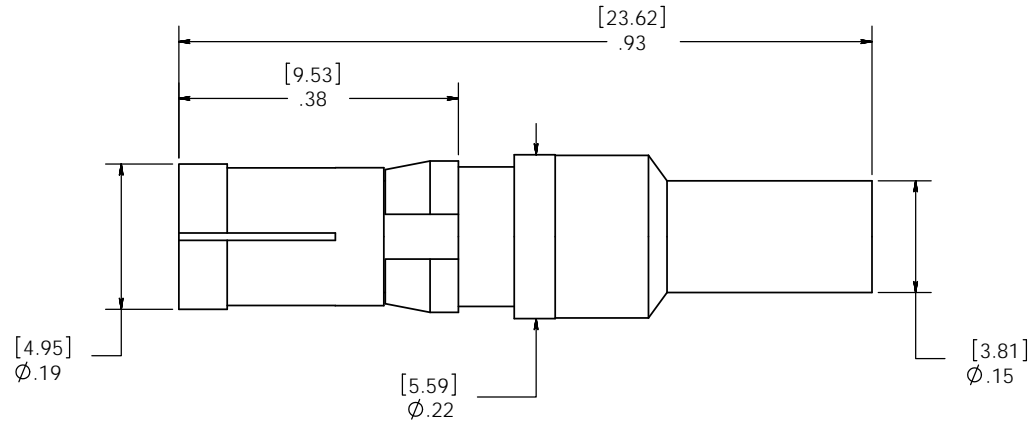
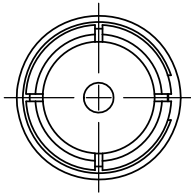


DO NOT SCALE DRAWING

THE INFORMATION CONTAINED HEREIN IS THE EXCLUSIVE PROPERTY OF VIRGINIA PANEL CORPORATION AND IS SUBMITTED FOR USE BY THE CUSTOMER ONLY. THE DATA SHALL NOT BE DUPLICATED, USED, OR DISCLOSED IN WHOLE OR IN PART FOR ANY PURPOSE OTHER THAN TO MAINTAIN THE EQUIPMENT PROVIDED. CONSULT WITH VIRGINIA PANEL CORPORATION ENGINEERING IF MORE DETAIL IS REQUIRED.

| REVISIONS |             |          |      |
|-----------|-------------|----------|------|
| REV       | DESCRIPTION | DATE     | ENGR |
| B         | ECN #3664   | 11/30/11 | CC   |



**ELECTRICAL SPECIFICATIONS:**

IMPEDANCE: 75 OHM  
 VOLTAGE RATING: 800 VRMS  
 CURRENT RATING: 0.5 AMPS MAX CONTINUOUS  
 BANDWIDTH: DC TO 3GHZ  
 RESISTANCE: CENTER - 5 MILLIOHMS  
 OUTER - 3 MILLIOHMS  
 INSERTION LOSS: -1.64 DB @ 3 GHZ

|   |  |  |  |
|---|--|--|--|
| <b>CUSTOMER DRAWING</b>   |  |  |  |
| <b>VIRGINIA PANEL CORPORATION</b><br><small>WWW.VPC.COM</small> |  |  |  |
| <b>CONTACT RCV 75 OHM</b><br><b>F/RG-179</b>                    |  |  |  |

1. FOR APPLICATION USE AND CARE INFORMATION CONSULT VPC USERS GUIDE @ WWW.VPC.COM  
**NOTES:**

|                          |               |            |                   |              |
|--------------------------|---------------|------------|-------------------|--------------|
| DIMENSIONS ARE SHOWN AS: | SIZE          | CAGE CODE  | DWG.NO.           | REV          |
|                          | [MILLIMETERS] | B 18117    | 610104157         | B            |
|                          | INCHES        | SCALE: 6:1 | 610104157 12/6/00 | SHEET 1 OF 1 |