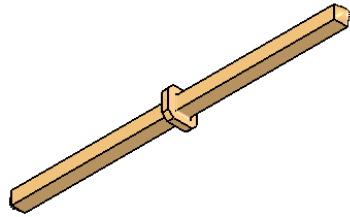
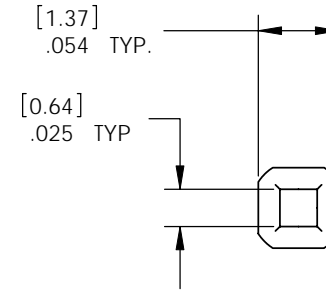
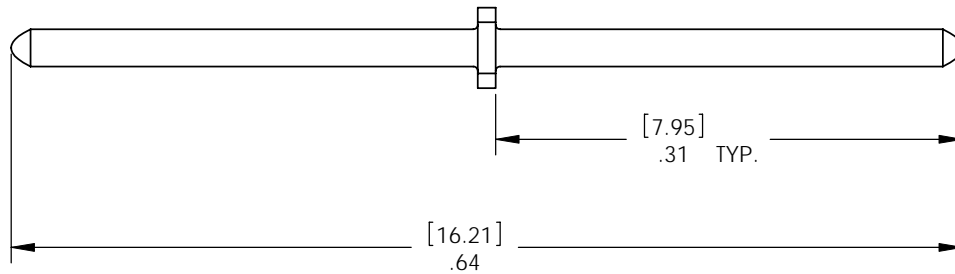


DO NOT SCALE DRAWING



THE INFORMATION CONTAINED HEREIN IS THE EXCLUSIVE PROPERTY OF VIRGINIA PANEL CORPORATION AND IS PROVIDED FOR USE BY THE CUSTOMER ONLY.

REVISIONS			
REV	DESCRIPTION	DATE	APPROVED
A	ORIGINAL RELEASE	10/15/03	
B	ECN #05-610-0005	3/15/05	DMA
C	ECN #09-610-0010	9/22/09	RLH



CUSTOMER DRAWING - CUSTOMER DRAWING

DIMENSIONS ARE SHOWN AS [MILLIMETERS] INCHES		SIGNATURES		DATE	VIRGINIA PANEL CORP.			
DR	R HERRON			10/15/03				
CHK	D ASHBY			10/17/03	ADAPTOR PIN SQ. POST			
MATERIAL BRASS ALLOY								
FINISH 30 μ INCHES Au OVER 100 μ INCHES Ni					SIZE B	FSCM NO. 18117	DWG.NO. 610138118	REV C
					SCALE: 4:1	610138118	10/15/03	SHEET 1 OF 1

1. FOR APPLICATION USE AND CARE INFORMATION CONSULT VPC USERS MANUAL @ WWW.VPC.COM

NOTES: