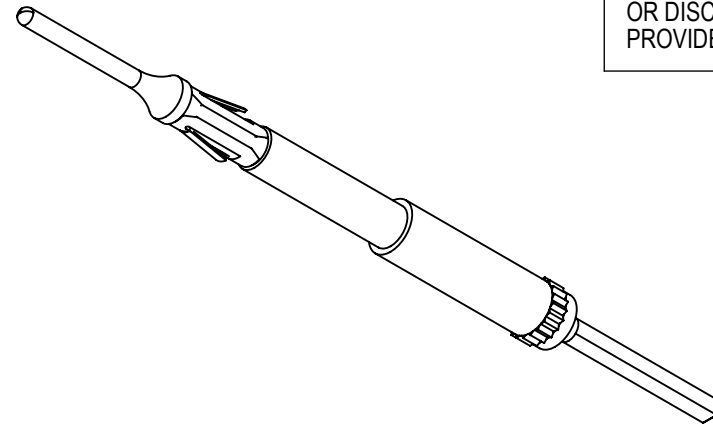


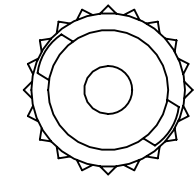
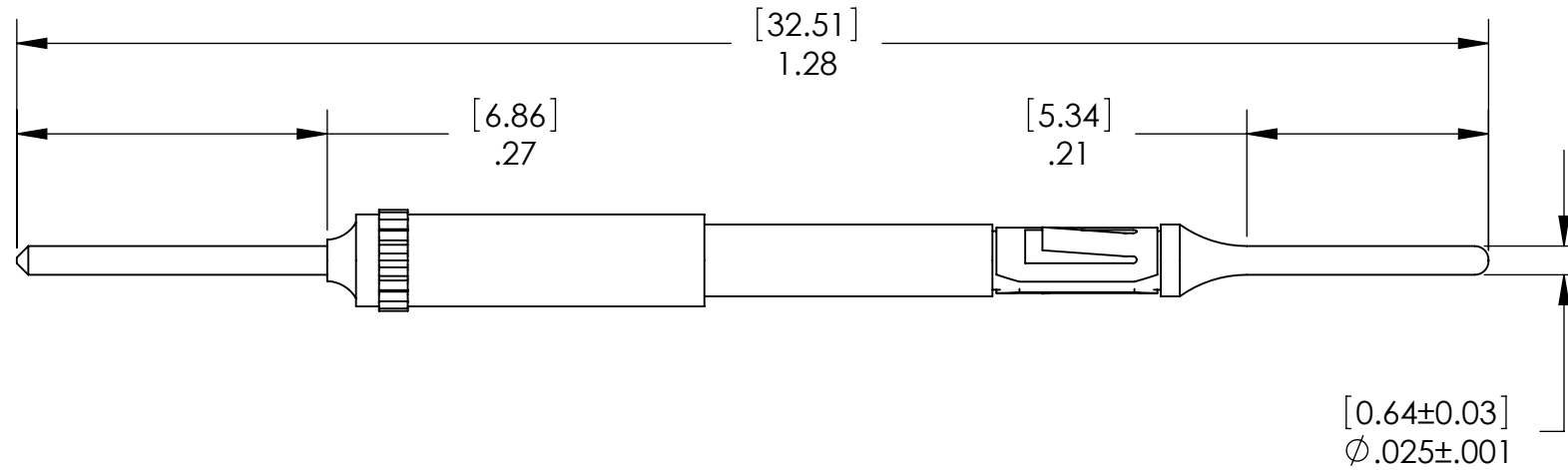
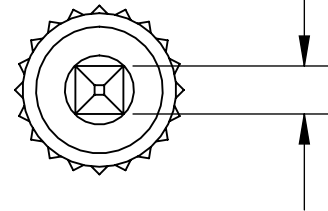
DO NOT SCALE DRAWING

THE INFORMATION CONTAINED HEREIN IS THE EXCLUSIVE PROPERTY OF VIRGINIA PANEL CORPORATION AND IS SUBMITTED FOR USE BY THE CUSTOMER ONLY. THE DATA SHALL NOT BE DUPLICATED, USED, OR DISCLOSED IN WHOLE OR IN PART FOR ANY PURPOSE OTHER THAN TO MAINTAIN THE EQUIPMENT PROVIDED. CONSULT WITH VIRGINIA PANEL CORPORATION ENGINEERING IF MORE DETAIL IS REQUIRED.

REVISIONS			
REV	DESCRIPTION	DATE	ENGR
B	ECN #3139	2/1/11	E HUSTED



[0.64±0.03]
.025±.001
SQUARE POST



3. LIMITED REPLACABILITY IN ONE MODULE POSITION (5X)

2. PHYSICAL CHARACTERISTICS:

WEIGHT - .015 OZ.

MATERIALS:

CONTACT - BRASS ALLOY

RETAINING RING - BeCu ALLOY

CONTACT PLATING - 30 μ INCHS Au OVER 100 μ INCHES NICKEL

1. FOR APPLICATION USE AND CARE INFORMATION CONSULT VPC USERS GUIDE @ WWW.VPC.COM

NOTES:

CUSTOMER DRAWING

VIRGINIA PANEL CORPORATION

WWW.VPC.COM

**WW MALE QPDL PIN,
ANTI ROTATION**

DIMENSIONS ARE SHOWN AS:

[MILLIMETERS]
INCHES

SIZE	CAGE CODE	DWG.NO.	REV
B	18117	610138122	B
SCALE: 2:1	610138122	12/11/07	SHEET 1 OF 1