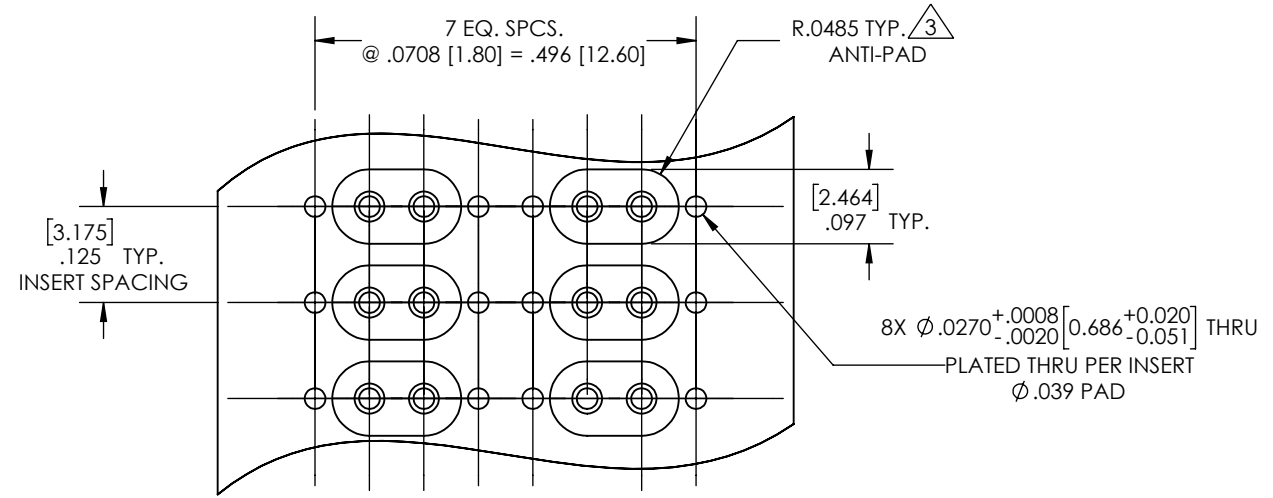
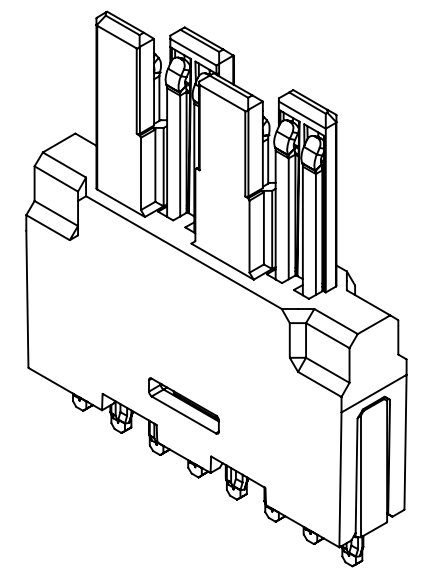
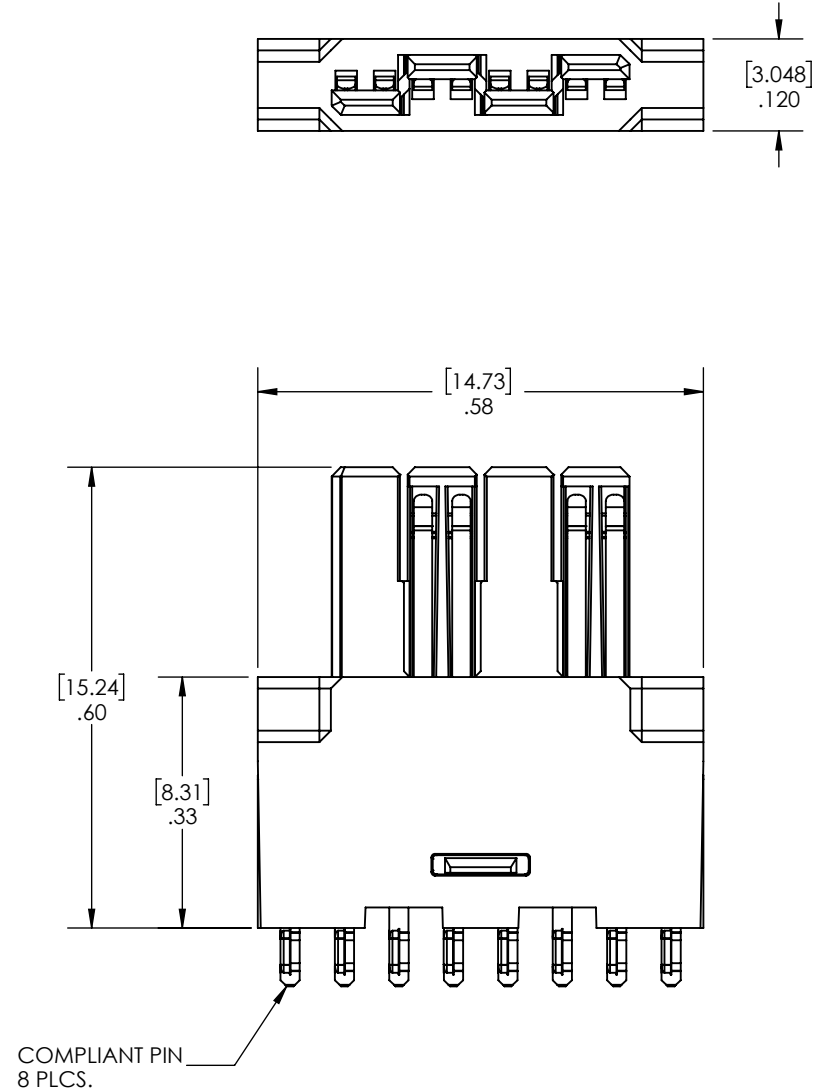


THE INFORMATION CONTAINED HEREIN IS THE EXCLUSIVE PROPERTY OF VIRGINIA PANEL CORPORATION AND IS SUBMITTED FOR USE BY THE CUSTOMER ONLY. THE DATA SHALL NOT BE DUPLICATED, USED, OR DISCLOSED IN WHOLE OR IN PART FOR ANY PURPOSE OTHER THAN TO MAINTAIN THE EQUIPMENT PROVIDED.

REV	DESCRIPTION	DATE	ENGINEER
F	ECN #12989	11/1/22	R HERRON

VERTICAL CONTACT LENGTHS $\triangle 5$	
PIN #	TOTAL LENGTH
1	.587 [14.910]
2	.576 [14.630]
3	.569 [14.453]
4	.566 [14.376]
5	.566 [14.376]
6	.569 [14.453]
7	.576 [14.630]
8	.587 [14.910]



PCB LAYOUT

- 7. SEE SHEET 2 FOR NOTE.
 - 6. SEE SHEET 2 FOR NOTE.
 - $\triangle 5$ INDIVIDUAL CONTACT LENGTHS ARE PROVIDED FOR TRACE LENGTH MATCHING.
 - 4. RECOMMENDED PCB LAYOUT
CONNECTOR MOUNTS THIS SIDE
BOARD THICKNESS = .062 [1.57]
DIMENSIONS TOLERANCE = \pm .005 [.13] UNLESS OTHERWISE SPECIFIED
 - $\triangle 3$ ANTI-PAD REQUIRED FOR USE WITH HIGH SPEED DIFFERENTIAL SIGNALS.
 - 2. SEE SHEET 2 FOR ADDITIONAL PCB LAYOUT INFORMATION.
 - 1. FOR APPLICATION USE AND CARE INFORMATION CONSULT VPC USERS GUIDE @ WWW.VPC.COM
- NOTES:

RELATIVE CONNECTOR POSITIONS AND WIRE ROUTING ARE GENERIC AND MAY VARY WITH PINOUT		
DIMENSIONS ARE SHOWN AS:		DWG. NO.
[MILLIMETERS]	INCHES	610151107
SCALE	CAGE CODE	SHEET
4:1	18117	1 OF 2

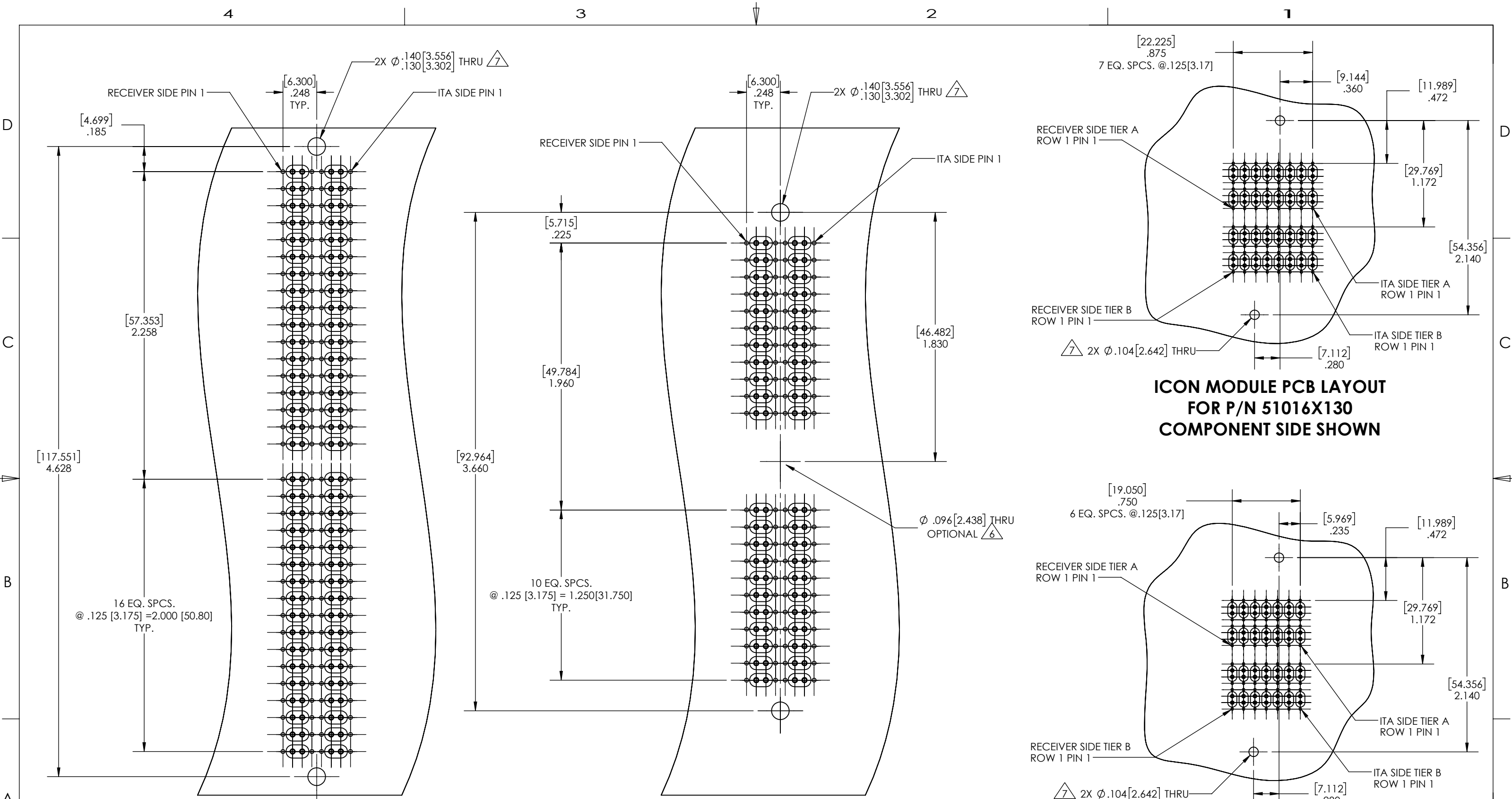
CUSTOMER DRAWING



VTAC
VERTICAL INSERT

D
C
B
A

D
C
B
A



**90 SERIES PCB LAYOUT
COMPONENT SIDE SHOWN**

**i2MX PCB LAYOUT
COMPONENT SIDE SHOWN**

**ICON MODULE PCB LAYOUT
FOR P/N 51016X130
COMPONENT SIDE SHOWN**

**ICON MODULE PCB LAYOUT
FOR P/N 51016X126
COMPONENT SIDE SHOWN**

VTAC VERTICAL INSERT INSERTION TOOL ALIGNMENT HOLES.

CLEARANCE HOLE FOR 2-56 SCREW TO ATTACH PCB TO i2MX RECEIVER FRAME. STANDOFF MAY BE REQUIRED DEPENDING ON APPLICATION.

NOTES:

DO NOT SCALE DRAWING

CUSTOMER DRAWING - CUSTOMER DRAWING - CUSTOMER DRAWING

THE INFORMATION CONTAINED HEREIN IS THE EXCLUSIVE PROPERTY OF VIRGINIA PANEL CORPORATION AND IS SUBMITTED FOR USE BY THE CUSTOMER ONLY. THE DATA SHALL NOT BE DUPLICATED, USED, OR DISCLOSED IN WHOLE OR IN PART FOR ANY PURPOSE OTHER THAN TO MAINTAIN THE EQUIPMENT PROVIDED.

DWG.NO.		REV
610151107		F
SCALE	CAGE CODE	SHEET
3:2	18117	2 OF 2