

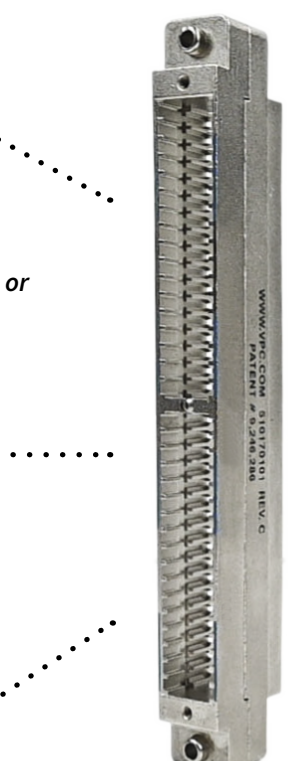
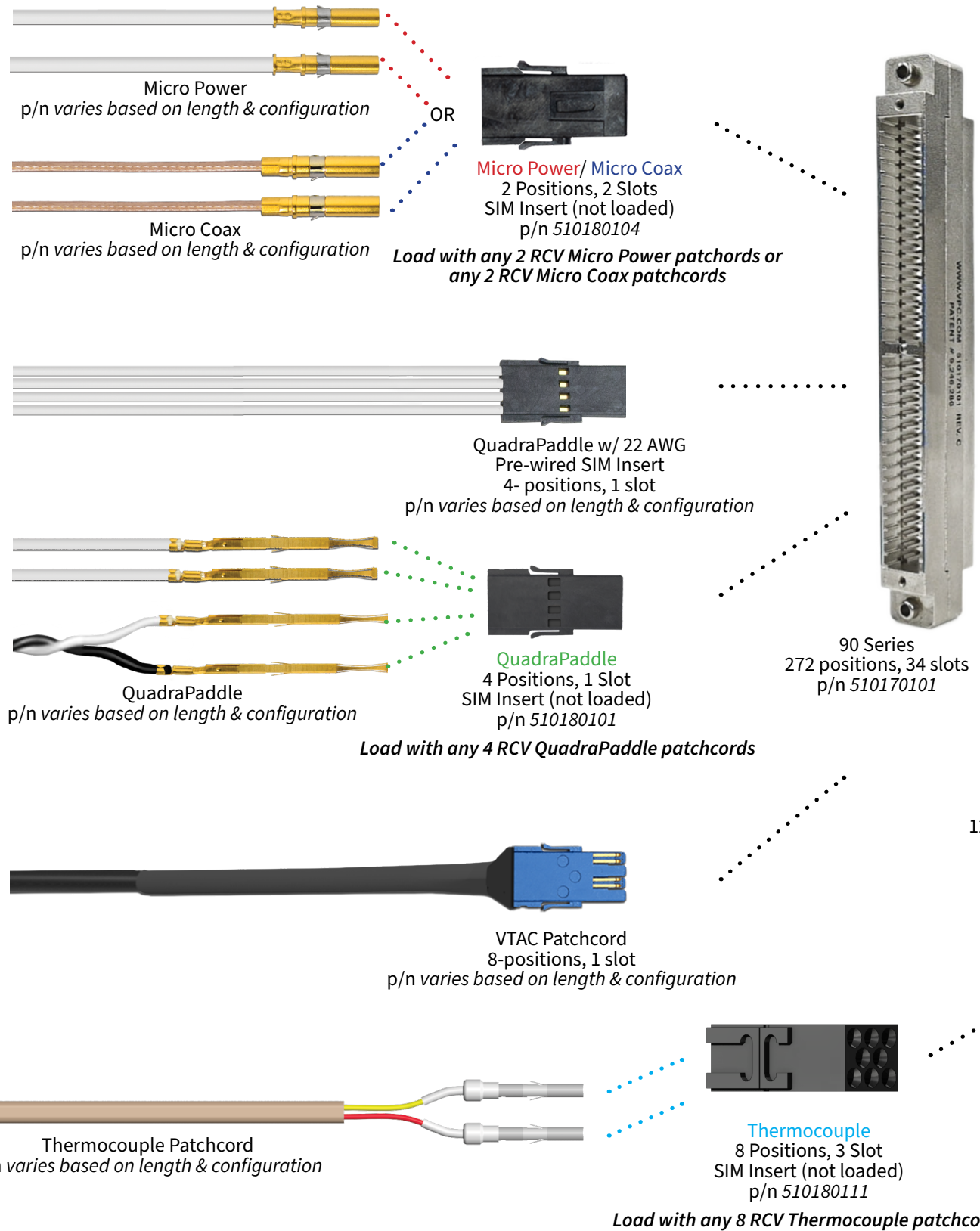
# Wired SIM Solutions

MIX MULTIPLE WIRED PROTOCOLS IN ONE MODULE WITH SIM TECHNOLOGY

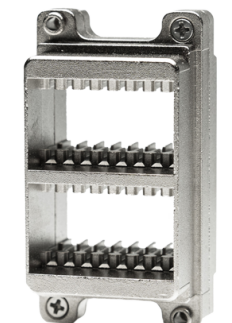
## RECEIVER

### PATCHCORDS/ SIM INSERTS

### SIM MODULES



90 Series  
272 positions, 34 slots  
p/n 510170101



iCon/i1  
128 positions, 16 slots  
p/n 510160130



i2 MX  
176 positions, 22 slots  
p/n 310130113



i2 MX  
176 positions, 22 slots  
p/n 410130116

Load SIM Modules\*  
into compatible

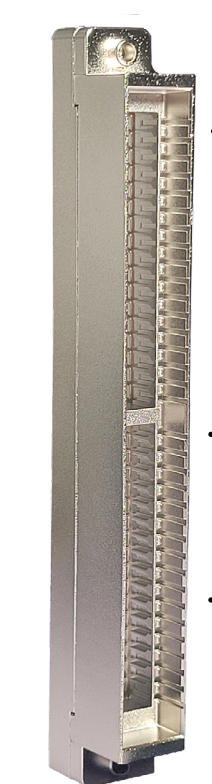
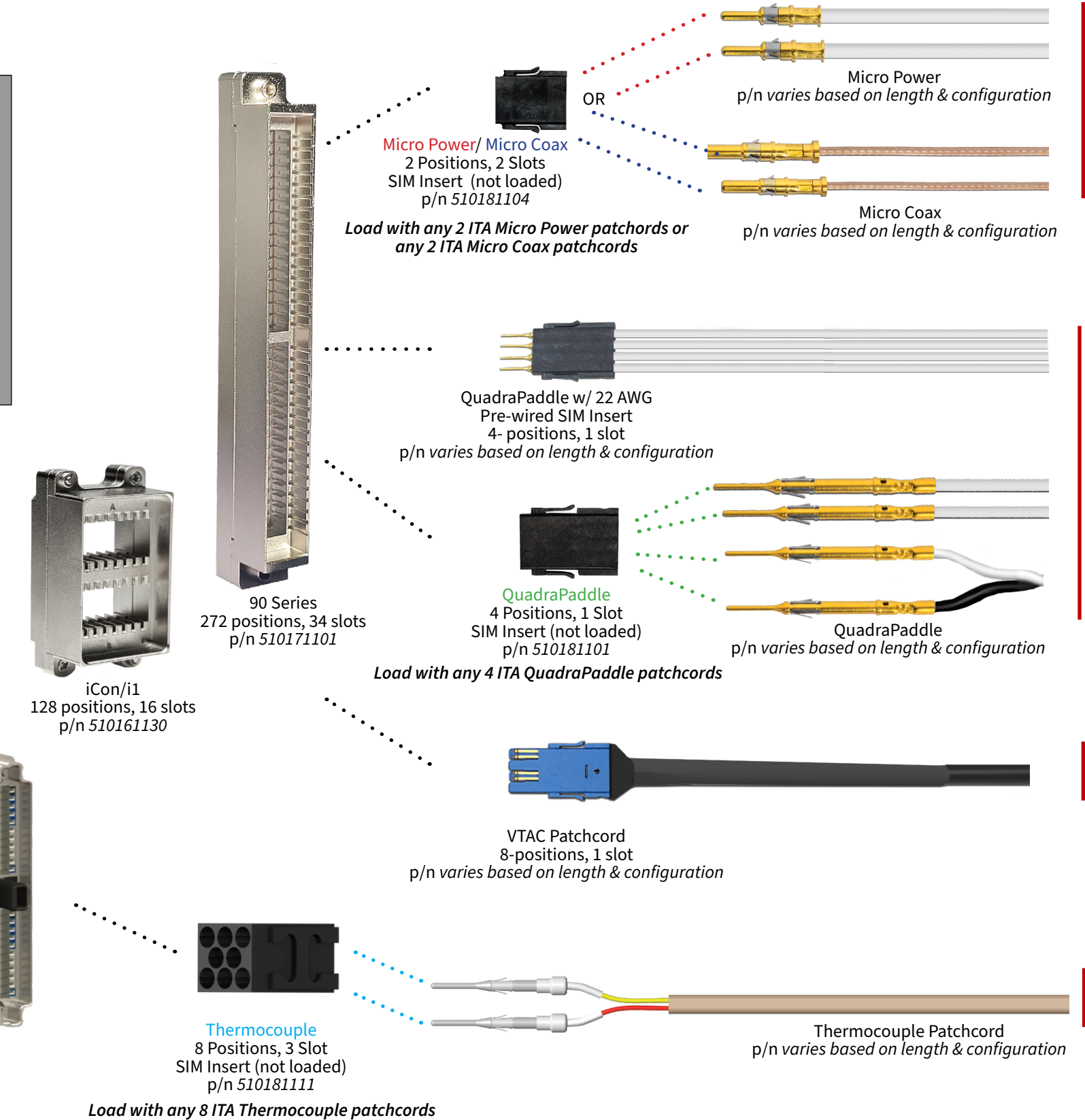
**90 SERIES &  
iSERIES  
ITAs  
RECEIVERS**

\*Inserts load directly into  
some models

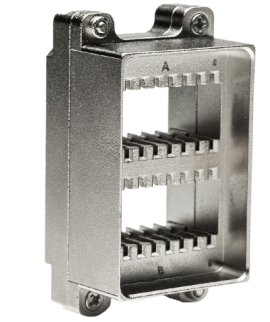
## ITA

### SIM MODULES

### PATCHCORDS/ INSERTS



90 Series  
272 positions, 34 slots  
p/n 510171101



iCon/i1  
128 positions, 16 slots  
p/n 510161130



VTAC Patchcord  
8-positions, 1 slot  
p/n varies based on length & configuration



Thermocouple  
8 Positions, 3 Slot  
SIM Insert (not loaded)  
p/n 510181111

