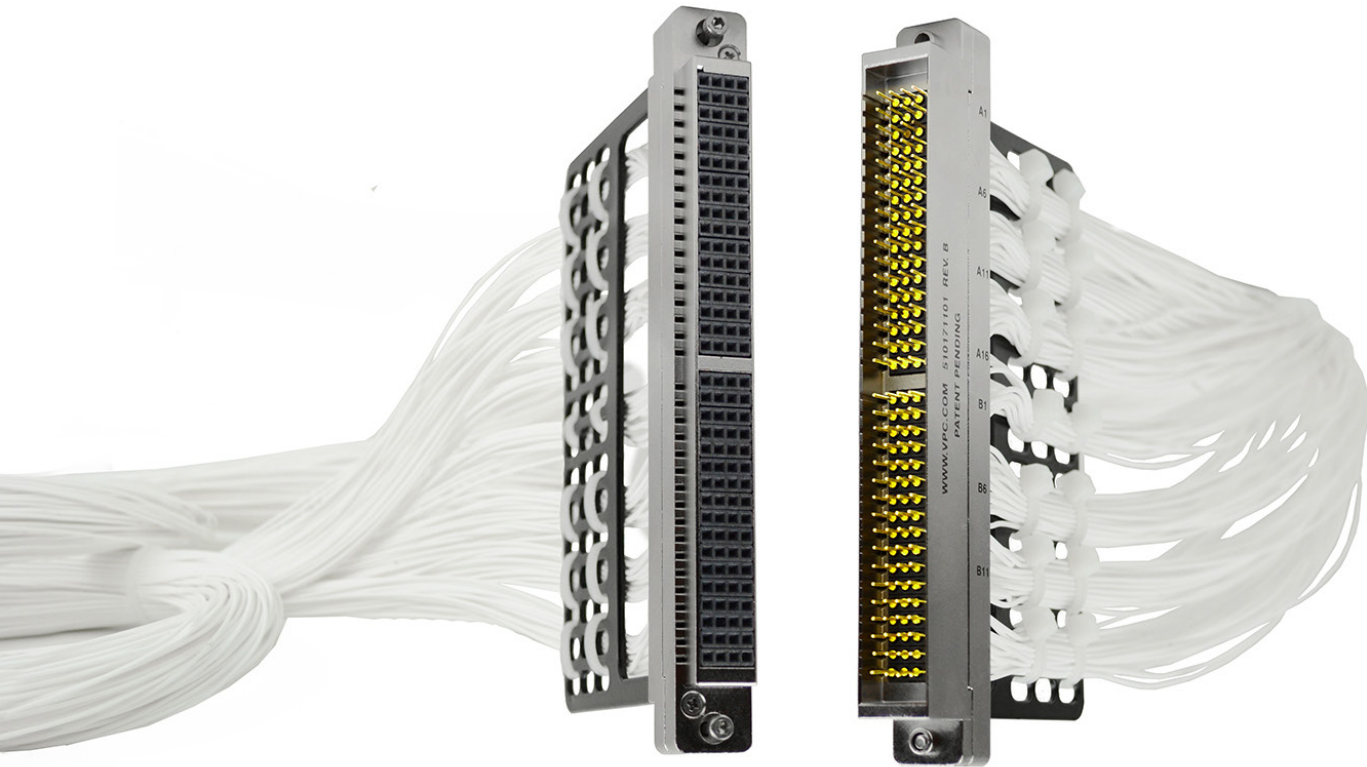


# SIM QuadraPaddle



## Features and Benefits

- Compatible with i2MX connectors and 90s Series SIM Modules
- SIM QuadraPaddle and VTAC HSD can be used in each module concurrently
- SIM QuadraPaddle only take up one slot in the 90s Series SIM Module
- SIM Cable Assemblies can easily be removed from the SIM Module with an inexpensive extraction tool

# SIM QuadraPaddle Receiver/ITA Options



ITA, i2 MX, 2 SIM Module Inserts, 22 Position, EMI Backshell



Receiver, i2 MX, 2 SIM Module Inserts, 22 Position, EMI-Shielded



SIM Module, Receiver, 34 Position



SIM Module, ITA, 34 Position

## Specifications

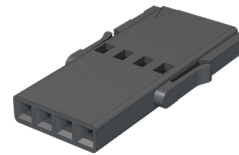
Insert Material	Black Liquid Crystal Polymer
Operating Temperature Range	-55° C to 100° C
Non-operating Temperature Range	-65° C to 225° C
Insert Slots Required	1

## Receiver Insert

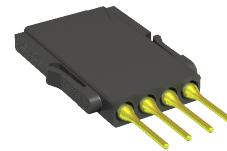
Insert Width	0.50 in [12.57 mm]
Insert Height	0.12 in [3.05 mm]
Insert Length	1.00 in [25.27 mm]

## ITA Insert

Insert Width	0.50 in [12.57 mm]
Insert Height	0.12 in [3.05 mm]
Insert Length	0.72 in [8.16 mm]



Signal Insert, Receiver, SIM QuadraPaddle, 4 Positions



Signal Insert, ITA, SIM QuadraPaddle, 4 Positions