

Tech Tip: G18 Slide Configuration

INDEX [\(CLICK TO NAVIGATE TO PAGE\)](#)

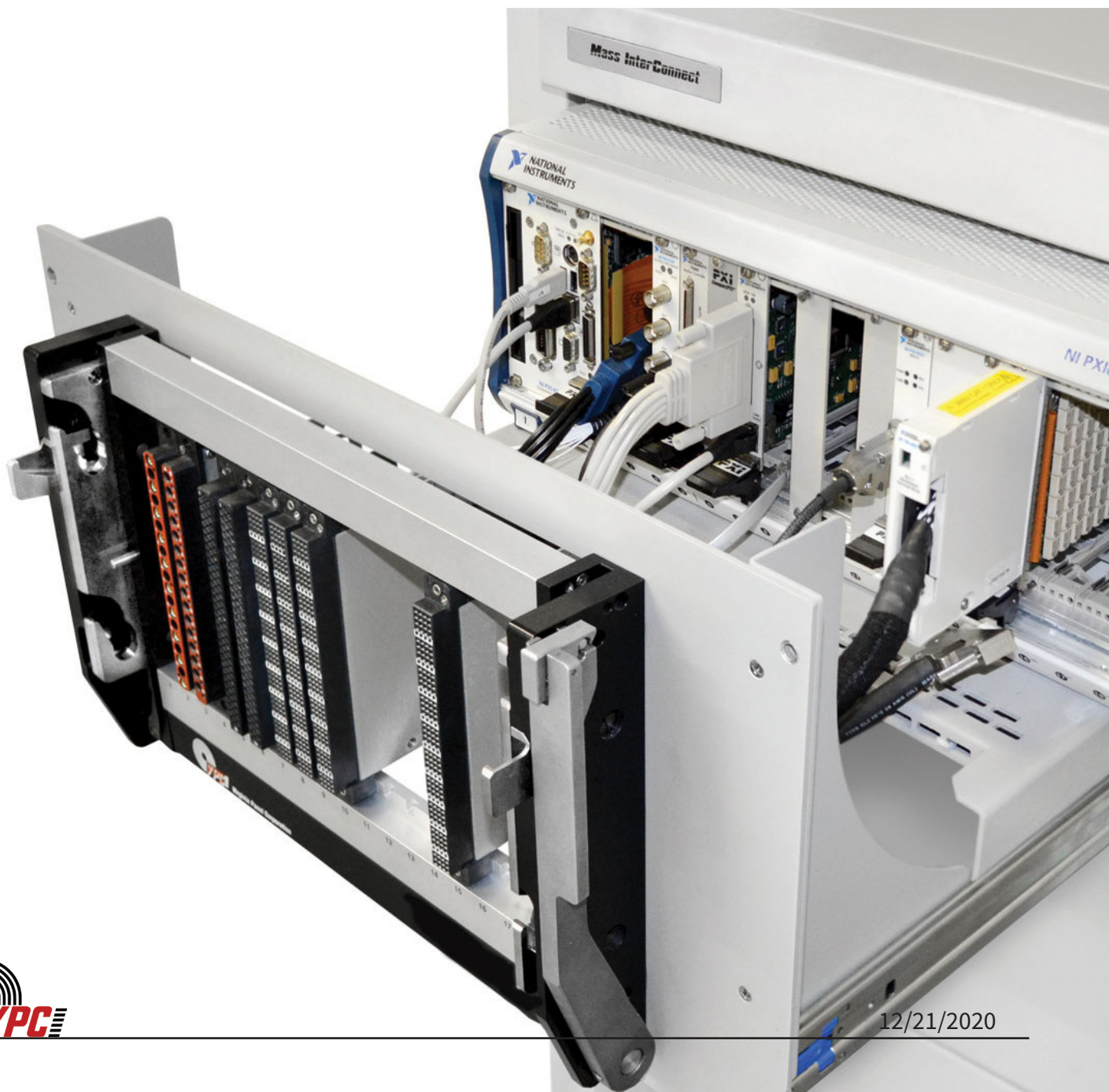
PAGE

1 [DETERMINING SLIDE KIT & INSTALLATION OF MOUNTING BRACKETS](#)

2 [INSTALLATION OF G18 RECEIVER TO MOUNTING PLATE](#)

3 [INSTRUMENT BRACKET INSTALLATION](#)

5 [CABLE TRAY INSTALLATION](#)



Tech Tip: G18 Slide Configuration

DETERMINING SLIDE KIT & INSTALLATION OF MOUNTING BRACKETS

20" SLIDE KIT (FITS 20" – 22" DEEP RACKS [508 - 558.8]) • PART # 310 113 409

24" SLIDE KIT (FITS 24" – 26" DEEP RACKS [609.6 - 660.4]) • PART # 310 113 410

28" SLIDE KIT (FITS 28" – 30" DEEP RACKS [711.2 - 762]) • PART # 310 113 451

30" SLIDE KIT (FITS 30" – 32" DEEP RACKS [762 - 812.8]) • PART # 310 113 411

36" SLIDE KIT (FITS 34" – 38" DEEP RACKS [863.6 - 965.2]) • PART # 310 113 500

NOTE: The slide kits include a mounting bracket kit, slides and hardware. Choose your slide kit based on the distance from rail to rail and verify that the slides will not interfere with the rack enclosure. Each kit will support 180 lbs.

TOOLS REQUIRED

Phillips Head Screwdriver

Flat Head Screwdriver

$\frac{3}{32}$ Allen Wrench

$\frac{5}{32}$ Allen Wrench

DETERMINE YOUR SLIDE KIT

1. Measure dimension A as shown in **Figure A** to determine the proper slide kit.

NOTE: Make sure the slide length does not exceed dimension A plus B.

INSTALLATION

1. Install slides using manufacturer's instructions. A hard copy is included with the slide kit.
(www accuride.com/Resources/pdf/3507-r4-0309.pdf)
2. Attach G18 mounting plate brackets to slides (**Figure B**).
NOTE: The screws will overhang the bracket holes by $\frac{3}{8}$ ". These screws will also be used to mount the optional keyboard tray kit, Part # 310 113 439.

**Installation instructions are continued on page 2 of this Tech Tip*

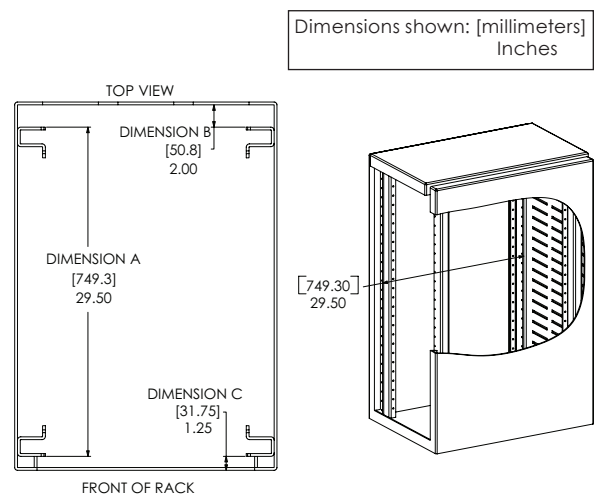


Figure A. Use the diagram above to determine the proper slide kit for your G18. Be sure the slide length does not exceed dimension A.

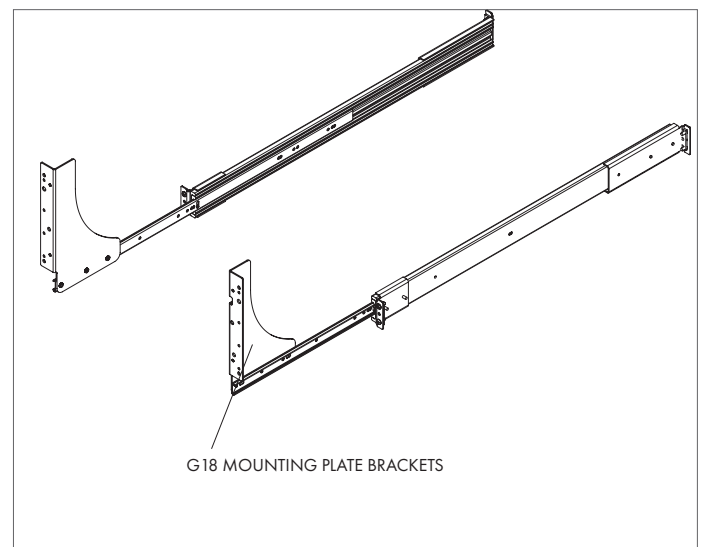


Figure B. The platform mounting brackets are threaded so washers and nuts will not need to be locked.

Tech Tip: G18 Slide Configuration

INSTALLATION (CONTINUED)

3. Attach G18 receiver to G18 mounting plate then attach plate to mounting brackets (**Figure C**).

NOTE: If you are installing a cable tray or instrument brackets, they should be installed prior to installing the G18 and plate assembly.

4. Pull the receiver out as far as possible. The slides will lock in position. Push the blue tabs located on the middle section of the slides (**Figure D**). Apply pressure to push the receiver back in toward the rack. The smaller inner slides move into the middle section, which should not move. Push receiver in until it backs into the rack. The mounting screws can now be used.

ALWAYS SUPPORT THE RECEIVER WITH THE MOST ROBUST (MIDDLE) SECTION OF THE SLIDES.

NOTE: To ensure proper support when extending the receiver away from the rack, stop the receiver and platform at approximately 6" from the rack. Reach around to the rear of the receiver to the slides underneath on both sides. Manually extend the middle section of the slides forward until fully underneath the platform. The receiver may then be extended while holding this middle slide in place. If completed properly, the middle section of the slides will remain underneath and offer the strongest support.



5. Secure receiver to rack.

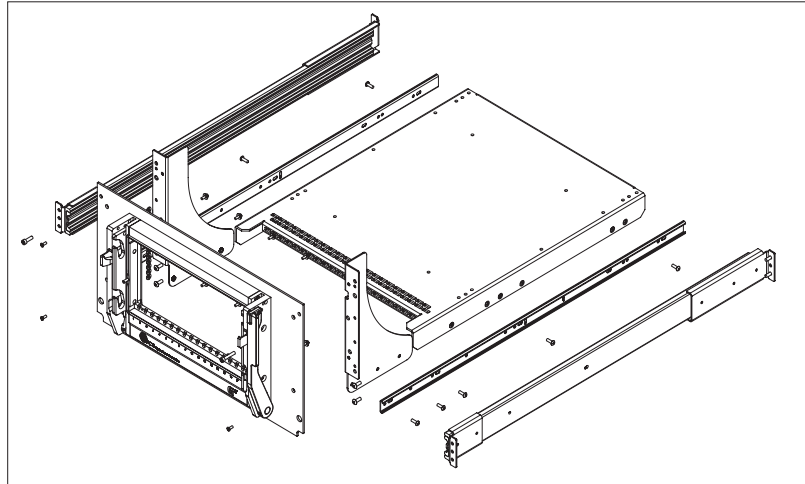


Figure C. Use the existing #8-32 flat head screws, washers, and hex nuts to secure the plate to the brackets.

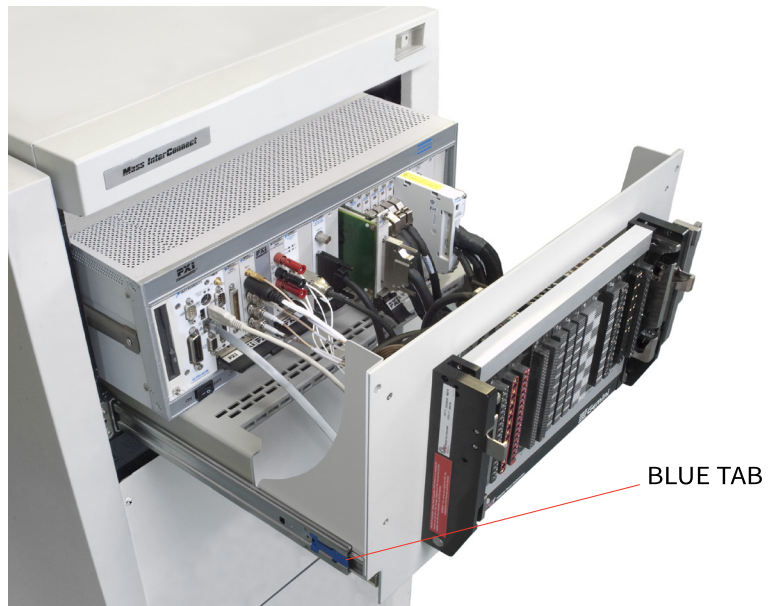


Figure D. The slides will support 180 pounds. VPC recommends removing the ITA/Fixture when extending the slides for wiring access and maintenance.

Tech Tip: G18 Slide Configuration

INSTRUMENT BRACKET INSTALLATION

PART # 310 113 453

The instrument brackets mount to the inner slide and provide maintenance access to the chassis and the instruments.

NOTE: This instrument bracket kit does not work with the 20" or 24" slide kits.

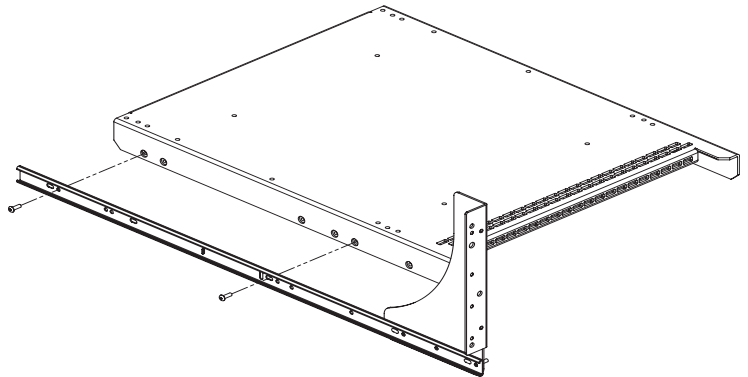


TOOLS REQUIRED

⁵/₃₂ Allen Wrench
Phillips Head Screwdriver

INSTALLATION

1. Depress the blue tab on the inner slide and remove.
2. Attach one of the mounting brackets to the slide using three #8-32 button head screws.
3. Attach the remaining bracket to the other inner slide.
If you are also installing a cable tray, do so before reinstalling the slides and attaching the plate. See *Cable Tray Installation* instructions in this section.



Continued on next page...

Figure A. The brackets are not identical parts and only the front three holes on each mounting flange are designed to line up with the slides.

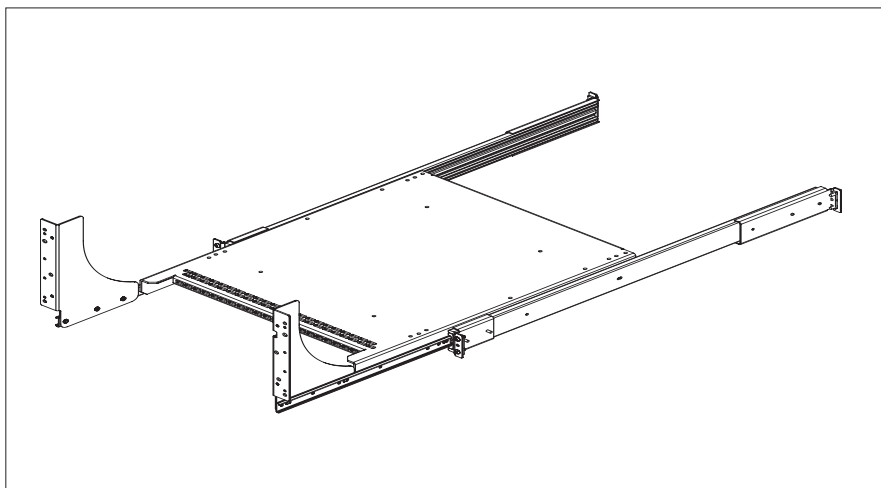


Figure B. The slots on the instrument brackets are designed to accept a strap should you want to secure your chassis.

Tech Tip: G18 Slide Configuration

5. Reinstall the inner slides.
 - Slide the left mid-section of the slide all the way out, you will feel it lock into position.
 - Feed the matching inner slide into position and ensure the inner section rides into place with the roller bearings seated into the groove.
 - Push the inner slide in about 6-8 inches and then pull out the right side. Slide the track of the mid-section over the right side of the inner slide.
 - Pull the slide out until the position matches the left side.
 - Reach to the back of the middle slides and release the spring locking mechanism (**Figure C**).

NOTE: Both sides are partially installed when it will no longer proceed into the rack because the support tab on the instrument brackets hits the slide mounting bracket.

6. Rotate both instrument brackets inward so the support tabs can pass the mounting brackets. Continue to push (install slides simultaneously) into position. Remember to push the blue tabs to allow the inner slide to continue to travel into the middle slide section.

NOTE: The middle section will not go into the outer section until the inner section has been fully installed into the middle section.

7. Tighten the slide mounting screws.

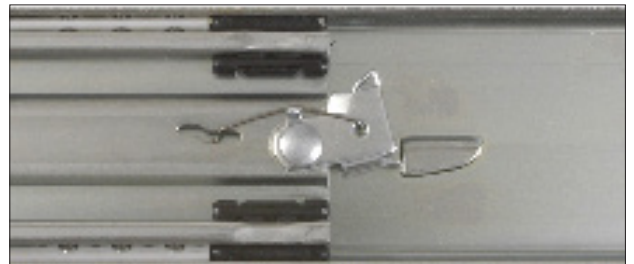


Figure C. Spring-locking mechanism.



MAKE SURE ALL SCREW HEADS HAVE BEEN SECURELY TIGHTENED. ONLY USE 8-32 BUTTON HEAD SCREWS.

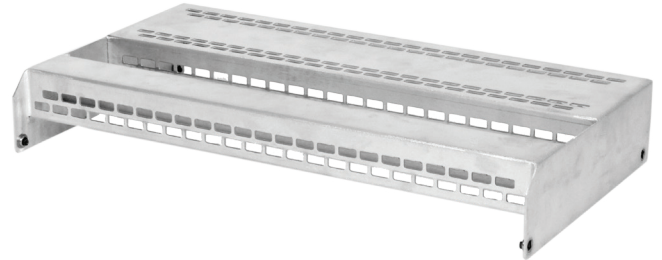
Tech Tip: G18 Slide Configuration

CABLE TRAY INSTALLATION

CABLE TRAY • PART # 310 113 424

The cable tray is used for strain relief and cable management. The horizontal and vertical flanges provide tie down options that allow you to route your cables as needed and also present a secure and reliable way to protect your investment. For tips on proper strain relief methods, consult VPC's Strain Relief User Manual. (vpc.com/resources/user-manuals/assets/interconnect-solution-manuals/strain-relief-user-manual/)

NOTE: The cable tray does not work with the 20" or 24" slide kits or the instrument bracket kit with strain relief.



CABLE TRAY INSTALLATION

1. Loosen the slide mounting screws by one turn.
2. Depress the blue tab and remove the inner slides.
3. Attach the cable tray to the slides with #8-32 screws as shown in **Figure A**.

TOOLS REQUIRED

$\frac{3}{32}$ Allen wrench

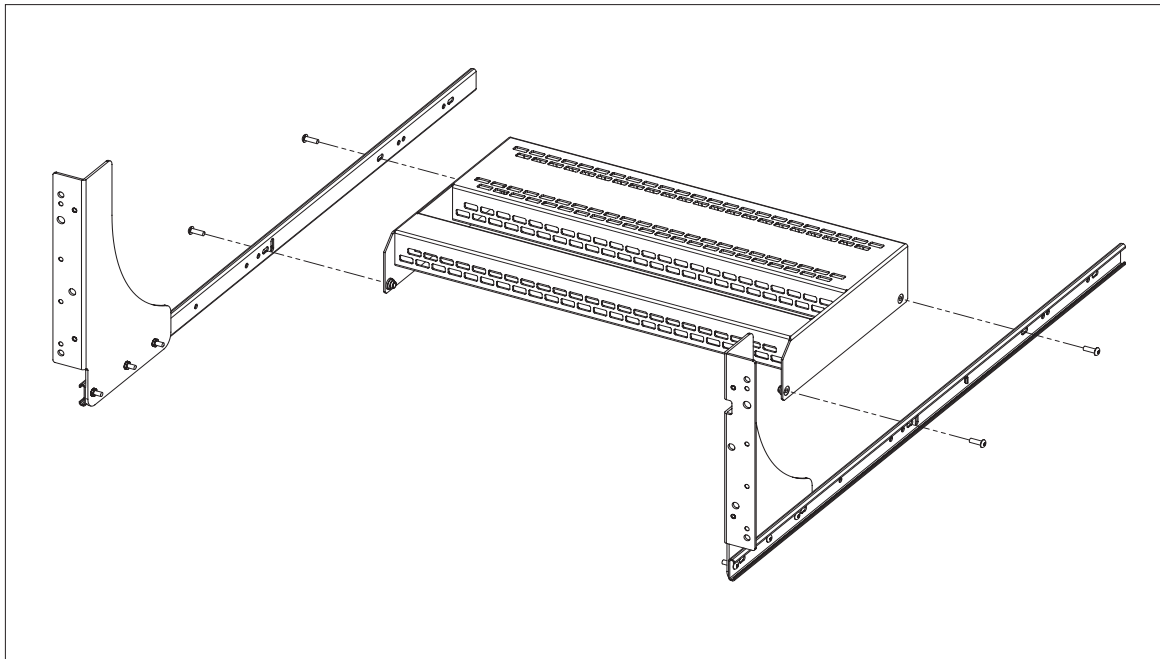


Figure A. The angled side of the cable tray should face the G18 receiver, and with shorter slide kits the cable tray will sit below the lip of the instrument brackets.

4. Install the inner slides and cable tray assembly into the rack. See Instrument Bracket Installation instructions in this section for more detail.
5. Tighten the slide mounting screws.

