

4

3

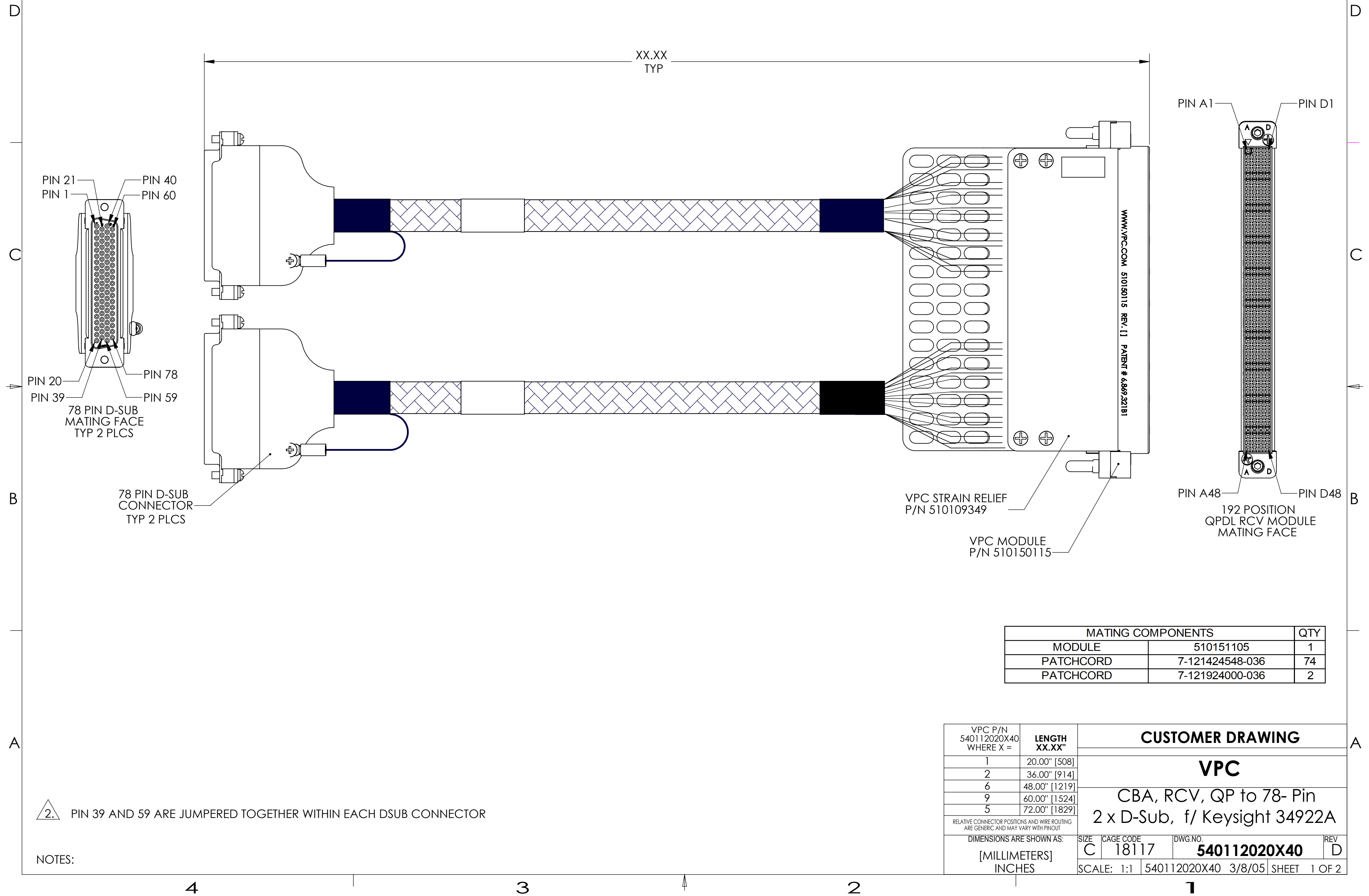
2

1

DO NOT SCALE DRAWING

THE INFORMATION CONTAINED HEREIN IS THE EXCLUSIVE PROPERTY OF VIRGINIA PANEL CORPORATION AND IS SUBMITTED FOR USE BY THE CUSTOMER ONLY. THE DATA SHALL NOT BE DUPLICATED, USED, OR DISCLOSED IN WHOLE OR IN PART FOR ANY PURPOSE OTHER THAN TO MAINTAIN THE EQUIPMENT PROVIDED. CONSULT WITH VIRGINIA PANEL CORPORATION ENGINEERING IF MORE DETAIL IS REQUIRED.

REVISIONS			
REV	DESCRIPTION	DATE	ENGR
D	ECN #12472	4/7/2022	IC



MATING COMPONENTS		
MODULE	QTY	
MODULE	510151105	1
PATCHCORD	7-121424548-036	74
PATCHCORD	7-121924000-036	2

VPC P/N 540112020X40 WHERE X =	LENGTH XX.XX"	CUSTOMER DRAWING		
1	20.00" [508]	VPC CBA, RCV, QP to 78- Pin 2 x D-Sub, f/ Keysight 34922A		
2	36.00" [914]			
6	48.00" [1219]			
9	60.00" [1524]			
5	72.00" [1829]			
RELATIVE CONNECTOR POSITIONS AND WIRE ROUTING ARE GENERIC AND MAY VARY WITH PINOUT		DIMENSIONS ARE SHOWN AS:		
		SIZE	CAGE CODE	DWG. NO.
		C	18117	540112020X40
		SCALE: 1:1 540112020X40 3/8/05 SHEET 1 OF 2		

2. PIN 39 AND 59 ARE JUMPERED TOGETHER WITHIN EACH DSUB CONNECTOR

NOTES:

4

3

2

1

78 Pin Connector "BANK 1"	VPC Module	PATCH CORD P/N	COLOR	78 Pin Connector "BANK 1"	VPC Module	PATCH CORD P/N	COLOR
1	A 1	7-124424548-XXX	WHT	43	C 1	7-124424548-XXX	WHT
2	A 2		BLK	44	C 2		BLK
3	A 3	7-124424548-XXX	WHT	45	C 3	7-124424548-XXX	WHT
4	A 4		BLK	46	C 4		BLK
5	A 5	7-124424548-XXX	WHT	47	C 5	7-124424548-XXX	WHT
6	A 6		BLK	48	C 6		BLK
7	A 7	7-124424548-XXX	WHT	49	C 7	7-124424548-XXX	WHT
8	A 8		BLK	50	C 8		BLK
9	A 9	7-124424548-XXX	WHT	51	C 9	7-124424548-XXX	WHT
10	A 10		BLK	52	C 10		BLK
11	A 11	7-124424548-XXX	WHT	53	C 11	7-124424548-XXX	WHT
12	A 12		BLK	54	C 12		BLK
13	A 13	7-124424548-XXX	WHT	55	C 13	7-124424548-XXX	WHT
14	A 14		BLK	56	C 14		BLK
15	A 15	7-124424548-XXX	WHT	57	C 15	7-124424548-XXX	WHT
16	A 16		BLK	58	C 16		BLK
17	A 17	7-124424548-XXX	WHT	61	C 17	7-124424548-XXX	WHT
18	A 18		BLK	62	C 18		BLK
19	A 19	7-124424548-XXX	WHT	63	C 19	7-124424548-XXX	WHT
20	A 20		BLK	64	C 20		BLK
21	B 1	7-124424548-XXX	WHT	65	D 1	7-124424548-XXX	WHT
22	B 2		BLK	66	D 2		BLK
23	B 3	7-124424548-XXX	WHT	67	D 3	7-124424548-XXX	WHT
24	B 4		BLK	68	D 4		BLK
25	B 5	7-124424548-XXX	WHT	69	D 5	7-124424548-XXX	WHT
26	B 6		BLK	70	D 6		BLK
27	B 7	7-124424548-XXX	WHT	71	D 7	7-124424548-XXX	WHT
28	B 8		BLK	72	D 8		BLK
29	B 9	7-124424548-XXX	WHT	73	D 9	7-124424548-XXX	WHT
30	B 10		BLK	74	D 10		BLK
31	B 11	7-124424548-XXX	WHT	75	D 11	7-124424548-XXX	WHT
32	B 12		BLK	76	D 12		BLK
33	B 13	7-124424548-XXX	WHT	40	D 13	7-124424548-XXX	WHT
34	B 14		BLK	60	D 14		BLK
35	B 15	7-124424548-XXX	WHT	39	-	7-548725548-004	WHT
36	B 16		BLK	59	-		WHT
37	B 17	7-124424548-XXX	WHT	BACKSHELL	D 15	7-124924000-XXX	WHT
38	B 18		BLK				
41	B 19	7-124424548-XXX	WHT				WHT
42	B 20		BLK				



78 Pin Connector "BANK 2"	VPC Module	PATCH CORD P/N	COLOR	78 Pin Connector "BANK 2"	VPC Module	PATCH CORD P/N	COLOR
1	A 24	7-124424548-XXX	WHT	43	C 24	7-124424548-XXX	WHT
2	A 25		BLK	44	C 25		BLK
3	A 26	7-124424548-XXX	WHT	45	C 26	7-124424548-XXX	WHT
4	A 27		BLK	46	C 27		BLK
5	A 28	7-124424548-XXX	WHT	47	C 28	7-124424548-XXX	WHT
6	A 29		BLK	48	C 29		BLK
7	A 30	7-124424548-XXX	WHT	49	C 30	7-124424548-XXX	WHT
8	A 31		BLK	50	C 31		BLK
9	A 32	7-124424548-XXX	WHT	51	C 32	7-124424548-XXX	WHT
10	A 33		BLK	52	C 33		BLK
11	A 34	7-124424548-XXX	WHT	53	C 34	7-124424548-XXX	WHT
12	A 35		BLK	54	C 35		BLK
13	A 36	7-124424548-XXX	WHT	55	C 36	7-124424548-XXX	WHT
14	A 37		BLK	56	C 37		BLK
15	A 38	7-124424548-XXX	WHT	57	C 38	7-124424548-XXX	WHT
16	A 39		BLK	58	C 39		BLK
17	A 40	7-124424548-XXX	WHT	61	C 40	7-124424548-XXX	WHT
18	A 41		BLK	62	C 41		BLK
19	A 42	7-124424548-XXX	WHT	63	C 42	7-124424548-XXX	WHT
20	A 43		BLK	64	C 43		BLK
21	B 24	7-124424548-XXX	WHT	65	D 24	7-124424548-XXX	WHT
22	B 25		BLK	66	D 25		BLK
23	B 26	7-124424548-XXX	WHT	67	D 26	7-124424548-XXX	WHT
24	B 27		BLK	68	D 27		BLK
25	B 28	7-124424548-XXX	WHT	69	D 28	7-124424548-XXX	WHT
26	B 29		BLK	70	D 29		BLK
27	B 30	7-124424548-XXX	WHT	71	D 30	7-124424548-XXX	WHT
28	B 31		BLK	72	D 31		BLK
29	B 32	7-124424548-XXX	WHT	73	D 32	7-124424548-XXX	WHT
30	B 33		BLK	74	D 33		BLK
31	B 34	7-124424548-XXX	WHT	75	D 34	7-124424548-XXX	WHT
32	B 35		BLK	76	D 35		BLK
33	B 36	7-124424548-XXX	WHT	40	D 36	7-124424548-XXX	WHT
34	B 37		BLK	60	D 37		BLK
35	B 38	7-124424548-XXX	WHT	39	-	7-548725548-004	WHT
36	B 39		BLK	59	-		WHT
37	B 40	7-124424548-XXX	WHT	BACKSHELL	D 38	7-124924000-XXX	WHT
38	B 41		BLK				
41	B 42	7-124424548-XXX	WHT				WHT
42	B 43		BLK				



CUSTOMER DRAWING - CUSTOMER DRAWING - CUSTOMER DRAWING

THE INFORMATION CONTAINED HEREIN IS THE EXCLUSIVE PROPERTY OF VIRGINIA PANEL CORPORATION AND IS SUBMITTED FOR USE BY THE CUSTOMER ONLY. THE DATA SHALL NOT BE DUPLICATED, USED, OR DISCLOSED IN WHOLE OR IN PART FOR ANY PURPOSE OTHER THAN TO MAINTAIN THE EQUIPMENT PROVIDED.

SIZE	CAGE CODE	DWG. NO.	REV
C	18117	540112020X40	D
SCALE: NONE 540112020X40 9/06/11 SHEET 2 OF 2			

DO NOT SCALE DRAWING

4

3

2

1

4

3

2

1