

4

3

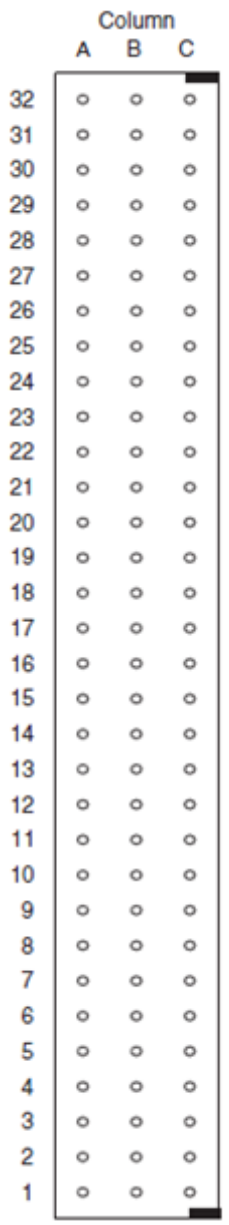
2

1

DO NOT SCALE DRAWING

THE INFORMATION CONTAINED HEREIN IS THE EXCLUSIVE PROPERTY OF VIRGINIA PANEL CORPORATION AND IS SUBMITTED FOR USE BY THE CUSTOMER ONLY. THE DATA SHALL NOT BE DUPLICATED, USED, OR DISCLOSED IN WHOLE OR IN PART FOR ANY PURPOSE OTHER THAN TO MAINTAIN THE EQUIPMENT PROVIDED. CONSULT WITH VIRGINIA PANEL CORPORATION ENGINEERING IF MORE DETAIL IS REQUIRED.

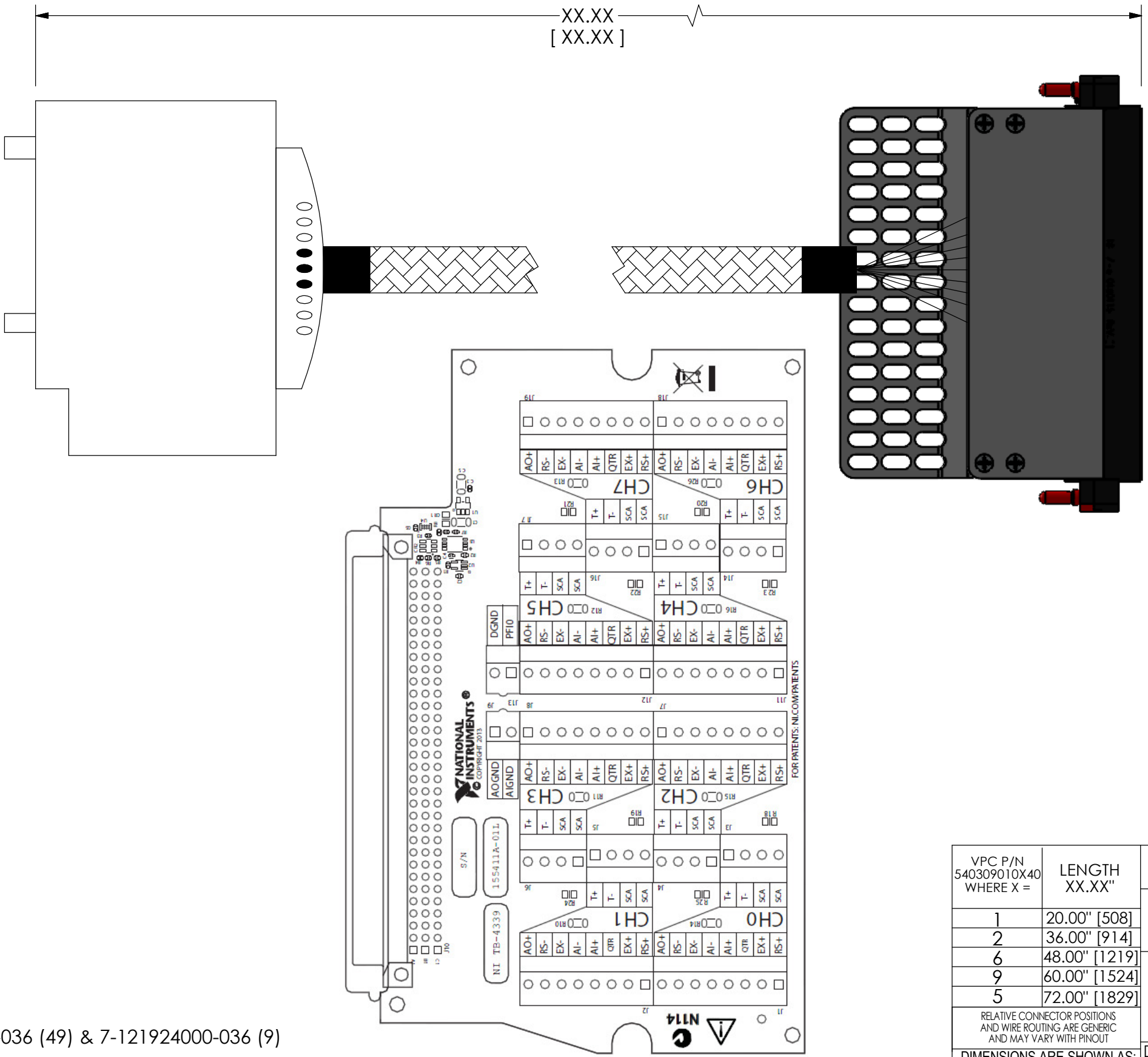
REV	DESCRIPTION	DATE	ENGINEER
D	ECN #13602	8/18/2023	C CHILDRESS



TB-4339 WIRING FACE

TB-4339

XX.XX  
[XX.XX]



MATING MODULE: 510151105 (1)  
MATING PATCHCORDS: 7-121425000-036 (49) & 7-121924000-036 (9)

1. FOR APPLICATION USE AND CARE INFORMATION CONSULT VPC USERS GUIDE @ WWW.VPC.COM

NOTES:

VPC P/N 540309010X40 WHERE X =	LENGTH XX.XX"
1	20.00" [508]
2	36.00" [914]
6	48.00" [1219]
9	60.00" [1524]
5	72.00" [1829]

RELATIVE CONNECTOR POSITIONS AND WIRE ROUTING ARE GENERIC AND MAY VARY WITH PINOUT

DIMENSIONS ARE SHOWN AS:  
[MILLIMETERS]  
INCHES

CUSTOMER DRAWING



CBA PXI QP RCV TB-4339

DWG.NO. <b>540309010X40</b>		REV D
SIZE B	SCALE NONE	CAGE CODE 18117
SHEET 1 OF 3		

4

3

2

1



Front Connector Diagram			Row Number	Column A	Column B	Column C	Channel																																																																																																																																
Column A B C <table border="1"> <tr><td>32</td><td>o</td><td>o</td><td>o</td></tr> <tr><td>31</td><td>o</td><td>o</td><td>o</td></tr> <tr><td>30</td><td>o</td><td>o</td><td>o</td></tr> <tr><td>29</td><td>o</td><td>o</td><td>o</td></tr> <tr><td>28</td><td>o</td><td>o</td><td>o</td></tr> <tr><td>27</td><td>o</td><td>o</td><td>o</td></tr> <tr><td>26</td><td>o</td><td>o</td><td>o</td></tr> <tr><td>25</td><td>o</td><td>o</td><td>o</td></tr> <tr><td>24</td><td>o</td><td>o</td><td>o</td></tr> <tr><td>23</td><td>o</td><td>o</td><td>o</td></tr> <tr><td>22</td><td>o</td><td>o</td><td>o</td></tr> <tr><td>21</td><td>o</td><td>o</td><td>o</td></tr> <tr><td>20</td><td>o</td><td>o</td><td>o</td></tr> <tr><td>19</td><td>o</td><td>o</td><td>o</td></tr> <tr><td>18</td><td>o</td><td>o</td><td>o</td></tr> <tr><td>17</td><td>o</td><td>o</td><td>o</td></tr> <tr><td>16</td><td>o</td><td>o</td><td>o</td></tr> <tr><td>15</td><td>o</td><td>o</td><td>o</td></tr> <tr><td>14</td><td>o</td><td>o</td><td>o</td></tr> <tr><td>13</td><td>o</td><td>o</td><td>o</td></tr> <tr><td>12</td><td>o</td><td>o</td><td>o</td></tr> <tr><td>11</td><td>o</td><td>o</td><td>o</td></tr> <tr><td>10</td><td>o</td><td>o</td><td>o</td></tr> <tr><td>9</td><td>o</td><td>o</td><td>o</td></tr> <tr><td>8</td><td>o</td><td>o</td><td>o</td></tr> <tr><td>7</td><td>o</td><td>o</td><td>o</td></tr> <tr><td>6</td><td>o</td><td>o</td><td>o</td></tr> <tr><td>5</td><td>o</td><td>o</td><td>o</td></tr> <tr><td>4</td><td>o</td><td>o</td><td>o</td></tr> <tr><td>3</td><td>o</td><td>o</td><td>o</td></tr> <tr><td>2</td><td>o</td><td>o</td><td>o</td></tr> <tr><td>1</td><td>o</td><td>o</td><td>o</td></tr> </table>			32	o	o	o	31	o	o	o	30	o	o	o	29	o	o	o	28	o	o	o	27	o	o	o	26	o	o	o	25	o	o	o	24	o	o	o	23	o	o	o	22	o	o	o	21	o	o	o	20	o	o	o	19	o	o	o	18	o	o	o	17	o	o	o	16	o	o	o	15	o	o	o	14	o	o	o	13	o	o	o	12	o	o	o	11	o	o	o	10	o	o	o	9	o	o	o	8	o	o	o	7	o	o	o	6	o	o	o	5	o	o	o	4	o	o	o	3	o	o	o	2	o	o	o	1	o	o	o	32	AIGND	EX+	AI+	0
			32	o	o	o																																																																																																																																	
			31	o	o	o																																																																																																																																	
			30	o	o	o																																																																																																																																	
			29	o	o	o																																																																																																																																	
			28	o	o	o																																																																																																																																	
			27	o	o	o																																																																																																																																	
			26	o	o	o																																																																																																																																	
			25	o	o	o																																																																																																																																	
			24	o	o	o																																																																																																																																	
			23	o	o	o																																																																																																																																	
			22	o	o	o																																																																																																																																	
			21	o	o	o																																																																																																																																	
			20	o	o	o																																																																																																																																	
			19	o	o	o																																																																																																																																	
			18	o	o	o																																																																																																																																	
			17	o	o	o																																																																																																																																	
			16	o	o	o																																																																																																																																	
			15	o	o	o																																																																																																																																	
			14	o	o	o																																																																																																																																	
			13	o	o	o																																																																																																																																	
			12	o	o	o																																																																																																																																	
			11	o	o	o																																																																																																																																	
			10	o	o	o																																																																																																																																	
			9	o	o	o																																																																																																																																	
			8	o	o	o																																																																																																																																	
			7	o	o	o																																																																																																																																	
			6	o	o	o																																																																																																																																	
			5	o	o	o																																																																																																																																	
			4	o	o	o																																																																																																																																	
			3	o	o	o																																																																																																																																	
			2	o	o	o																																																																																																																																	
1	o	o	o																																																																																																																																				
31	SCA	EX-	AI-																																																																																																																																				
30	SCA	RS-	RS+																																																																																																																																				
29	AIGND	EX+	AI+	1																																																																																																																																			
28	SCA	EX-	AI-																																																																																																																																				
27	SCA	RS-	RS+																																																																																																																																				
26	AIGND	EX+	AI+	2																																																																																																																																			
25	SCA	EX-	AI-																																																																																																																																				
24	SCA	RS-	RS+																																																																																																																																				
23	AIGND	EX+	AI+	3																																																																																																																																			
22	SCA	EX-	AI-																																																																																																																																				
21	SCA	RS-	RS+																																																																																																																																				
20	DGND	T0	T1	No Channel																																																																																																																																			
19	T4	T2	T3																																																																																																																																				
18	T5	T6	T7																																																																																																																																				
17	AOGND	AO0+	AO1+																																																																																																																																				
16	AO4+	AO2+	AO3+																																																																																																																																				
15	AO5+	AO6+	AO7+	4																																																																																																																																			
14	AIGND	EX+	AI+																																																																																																																																				
13	SCA	EX-	AI-																																																																																																																																				
12	SCA	RS-	RS+	5																																																																																																																																			
11	AIGND	EX+	AI+																																																																																																																																				
10	SCA	EX-	AI-																																																																																																																																				
9	SCA	RS-	RS+	6																																																																																																																																			
8	AIGND	EX+	AI+																																																																																																																																				
7	SCA	EX-	AI-																																																																																																																																				
6	SCA	RS-	RS+	7																																																																																																																																			
5	PFI0	EX+	AI+																																																																																																																																				
4	SCA	EX-	AI-																																																																																																																																				
3	SCA	RS-	RS+	No Channel																																																																																																																																			
2	RSVD	DGND	RSVD																																																																																																																																				
1	RSVD	RSVD	RSVD																																																																																																																																				

RSVD is reserved

REFERENCE ONLY

**CUSTOMER DRAWING - CUSTOMER DRAWING - CUSTOMER DRAWING**

THE INFORMATION CONTAINED HEREIN IS THE EXCLUSIVE PROPERTY OF VIRGINIA PANEL CORPORATION AND IS SUBMITTED FOR USE BY THE CUSTOMER ONLY. THE DATA SHALL NOT BE DUPLICATED, USED, OR DISCLOSED IN WHOLE OR IN PART FOR ANY PURPOSE OTHER THAN TO MAINTAIN THE EQUIPMENT PROVIDED.

DWG.NO.		540309010X40		REV	D
SIZE	SCALE	CAGE CODE	SHEET		
B	NONE	18117	2 OF 3		

DO NOT SCALE DRAWING

Run #	From Conn.	From Pin	AWG	Color	To Conn.	To Pin	Notes	CONN. PIN
1		A1	24 S T/P	WHT	TB-4339	J1 EX+		B32
2		B1		WHT/BLU		J1 EX-		B31
3		C1		SHIELD		RING LUG*		-
4		D1	24 S T/P	WHT	J1 RS+		C30	
5		A2		WHT/BLU	J1 RS-		B30	
6		B2		SHIELD	RING LUG*		-	
7		C2	24 S T/P	WHT	J1 AI+		C32	
8		D2		WHT/BLU	J1 AI-		C31	
9		A3		SHIELD	RING LUG*		-	
10		B3	24 S T/P	WHT	J1 QTR			
11		C3		WHT	J3 SCA-M			
12		D3		WHT/BLU	J3 SCA			
13		A4	24 S T/P	SHIELD	RING LUG*		-	
14		B4		WHT	J2 EX+		B29	
15		C4		WHT/BLU	J2 EX-		B28	
16		D4	SHIELD	RING LUG*		-		
17		A5	24 S T/P	WHT	J2 RS+		C27	
18		B5		WHT/BLU	J2 RS-		B27	
19		C5		SHIELD	RING LUG*		-	
20		D5	24 S T/P	WHT	J2 AI+		C29	
21		A6		WHT/BLU	J2 AI-		C28	
22		B6		SHIELD	RING LUG*		-	
23		C6	24 S T/P	WHT	J2 QTR			
24		D6		WHT	J5 SCA-M			
25		A7		WHT/BLU	J5 SCA	*JUMPER SHIELDS AT VENDOR END AND TAKE LAST LEAD TO RING LUG		
26	P1	B7	SHIELD	RING LUG*		-		
27		C7	24 S T/P	WHT	J7 EX+		B26	
28		D7		WHT/BLU	J7 EX-		B25	
29		A8		SHIELD	RING LUG*		-	
30		B8	24 S T/P	WHT	J7 RS+		C24	
31		C8		WHT/BLU	J7 RS-		B24	
32		D8		SHIELD	RING LUG*		-	
33		A9	24 S T/P	WHT	J7 AI+		C26	
34		B9		WHT/BLU	J7 AI-		C25	
35		C9		SHIELD	RING LUG*		-	
36		D9	24 S T/P	WHT	J7 QTR			
37		A10		WHT	J4 SCA-M			
38		B10		WHT/BLU	J4 SCA			
39		C10	24 S T/P	SHIELD	RING LUG*		-	
40		D10		WHT	J8 EX+		B23	
41		A11		WHT/BLU	J8 EX-		B22	
42		B11	SHIELD	RING LUG*		-		
43		C11	24 S T/P	WHT	J8 RS+		C21	
44		D11		WHT/BLU	J8 RS-		B21	
45		A12		SHIELD	RING LUG*		-	
46		B12	24 S T/P	WHT	J8 AI+		C23	
47		C12		WHT/BLU	J8 AI-		C22	
48		D12		SHIELD	RING LUG*		-	
49		A13	24 S T/P	WHT	J8 QTR			
50		B13		WHT	J6 SCA-M			
51		C13		WHT/BLU	J6 SCA			
52		D13	SHIELD	RING LUG*		-		

Run #	From Conn.	From Pin	AWG	Color	To Conn.	To Pin	Notes	CONN. PIN
53		A14	24 S T/P	WHT	TB-4339	J11 EX+		B14
54		B14		WHT/BLU		J11 EX-		B13
55		C14		SHIELD		RING LUG*		-
56		D14	24 S T/P	WHT	J11 RS+		C12	
57		A15		WHT/BLU	J11 RS-		B12	
58		B15		SHIELD	RING LUG*		-	
59		C15	24 S T/P	WHT	J11 AI+		C14	
60		D15		WHT/BLU	J11 AI-		C13	
61		A16		SHIELD	RING LUG*		-	
62		B16	24 S T/P	WHT	J11 QTR			
63		C16		WHT	J15 SCA-M			
64		D16		WHT/BLU	J15 SCA			
65		A17	24 S T/P	SHIELD	RING LUG*		-	
66		B17		WHT	J12 EX+		B11	
67		C17		WHT/BLU	J12 EX-		B10	
68		D17	SHIELD	RING LUG*		-		
69		A18	24 S T/P	WHT	J12 RS+		C9	
70		B18		WHT/BLU	J12 RS-		B9	
71		C18		SHIELD	RING LUG*		-	
72		D18	24 S T/P	WHT	J12 AI+		C11	
73		A19		WHT/BLU	J12 AI-		C10	
74		B19		SHIELD	RING LUG*		-	
75		C19	24 S T/P	WHT	J12 QTR			
76		D19		WHT	J17 SCA-M	*JUMPER SHIELDS AT VENDOR END AND TAKE LAST LEAD TO RING LUG		
77		A20		WHT/BLU	J17 SCA			
78	P1	B20	SHIELD	RING LUG*		-		
79		C20	24 S T/P	WHT	J18 EX+		B8	
80		D20		WHT/BLU	J18 EX-		B7	
81		A21		SHIELD	RING LUG*		-	
82		B21	24 S T/P	WHT	J18 RS+		C6	
83		C21		WHT/BLU	J18 RS-		B6	
84		D21		SHIELD	RING LUG*		-	
85		A22	24 S T/P	WHT	J18 AI+		C8	
86		B22		WHT/BLU	J18 AI-		C7	
87		C22		SHIELD	RING LUG*		-	
88		D22	24 S T/P	WHT	J18 QTR			
89		A23		WHT	J14 SCA-M			
90		B23		WHT/BLU	J14 SCA			
91		C23	24 S T/P	SHIELD	RING LUG*		-	
92		D23		WHT	J19 EX+		B5	
93		A24		WHT/BLU	J19 EX-		B4	
94		B24	SHIELD	RING LUG*		-		
95		C24	24 S T/P	WHT	J19 RS+		C3	
96		D24		WHT/BLU	J19 RS-		B3	
97		A25		SHIELD	RING LUG*		-	
98		B25	24 S T/P	WHT	J19 AI+		C5	
99		C25		WHT/BLU	J19 AI-		C4	
100		D25		SHIELD	RING LUG*		-	
101		A26	24 S T/P	WHT	J19 QTR			
102		B26		WHT	J16 SCA-M			
103		C26		WHT/BLU	J16 SCA			
104		D26	SHIELD	RING LUG*		-		

Run #	From Conn.	From Pin	AWG	Color	To Conn.	To Pin	Notes	CONN. PIN
105		D48	24 S T/P	WHT	TB-4339	J3 T-		
106		C48		WHT/BLU		J3 T+		
107		B48		SHIELD		RING LUG*		-
108		A48	24 S T/P	WHT	J4 T-			
109		D47		WHT/BLU	J4 T+			
110		C47		SHIELD	RING LUG*		-	
111		B47	24 S T/P	WHT	J5 T-			
112		A47		WHT/BLU	J5 T+			
113		D46		SHIELD	RING LUG*		-	
114		C46	24 S T/P	WHT	J6 T-			
115		B46		WHT/BLU	J6 T+			
116		A46		SHIELD	RING LUG*	*JUMPER SHIELDS AT VENDOR END AND TAKE LAST LEAD TO RING LUG		-
117		D45	24 S T/P	WHT	J14 T-			
118		C45		WHT/BLU	J14 T+			
119		B45		SHIELD	RING LUG*		-	
120		A45	24 S T/P	WHT	J15 T-			
121		D44		WHT/BLU	J15 T+			
122		C44		SHIELD	RING LUG*		-	
123		B44	24 S T/P	WHT	J16 T-			
124		A44		WHT/BLU	J16 T+			
125		D43		SHIELD	RING LUG*		-	
126		C43	24 S T/P	WHT	J17 T-			
127		B43		WHT/BLU	J17 T+			
128		A43		SHIELD	RING LUG*		-	
129		D42	24 S T/P	WHT	PF10		A5	
130		C42		WHT/BLU	DGND		B2	
131	P1	B42		SHIELD	RING LUG*		-	
132		A42	24 S T/P	WHT	AIGND			
133		D41		WHT	J1 AO+		B17	
134		C41		WHT/BLU	-			
135		B41	SHIELD	RING LUG*	*JUMPER SHIELDS AT VENDOR END AND TAKE LAST LEAD TO RING LUG		-	
136		A41	24 S T/P	WHT	J2 AO+		C17	
137		D40		WHT/BLU	-			
138		C40		SHIELD	RING LUG*		-	
139		B40	24 S T/P	WHT	J7 AO+		B16	
140		A40		WHT/BLU	-			
141		D39		SHIELD	RING LUG*		-	
142		C39	24 S T/P	WHT	J8 AO+	**SOLDER BY HAND IN 2 GROUPS OF 4 WRAPPING IN BUSS WIRE WITH 2 24AWG WIRES EXITING. COVER WITH TUBE. TAKE 2 LEADS TO 3200687 (FERRULE) FOR AOGND.	C16	
143		B39		WHT/BLU	-			
144		A39		SHIELD	RING LUG*		-	
145		D38	24 S T/P	WHT	J11 AO+		A16	
146		C38		WHT/BLU	-			
147		B38		SHIELD	RING LUG*		-	
148		A38	24 S T/P	WHT	J12 AO+		A15	
149		D37		WHT/BLU	-			
150		C37		SHIELD	RING LUG*		-	
151		B37	24 S T/P	WHT	J18 AO+		B15	
152		A37		WHT/BLU	-			
153		D36		SHIELD	RING LUG*		-	
154		C36	24 S T/P	WHT	J19 AO+		C15	
155		B36		WHT/BLU	AOGND		A17	
156		A36		SHIELD	RING LUG*		-	

### CUSTOMER DRAWING - CUSTOMER DRAWING - CUSTOMER DRAWING

THE INFORMATION CONTAINED HEREIN IS THE EXCLUSIVE PROPERTY OF VIRGINIA PANEL CORPORATION AND IS SUBMITTED FOR USE BY THE CUSTOMER ONLY. THE DATA SHALL NOT BE DUPLICATED, USED, OR DISCLOSED IN WHOLE OR IN PART FOR ANY PURPOSE OTHER THAN TO MAINTAIN THE EQUIPMENT PROVIDED.

DWG.NO.		REV	
540309010X40		D	
SIZE	SCALE	CAGE CODE	SHEET
B	NONE	18117	3 OF 3

DO NOT SCALE DRAWING