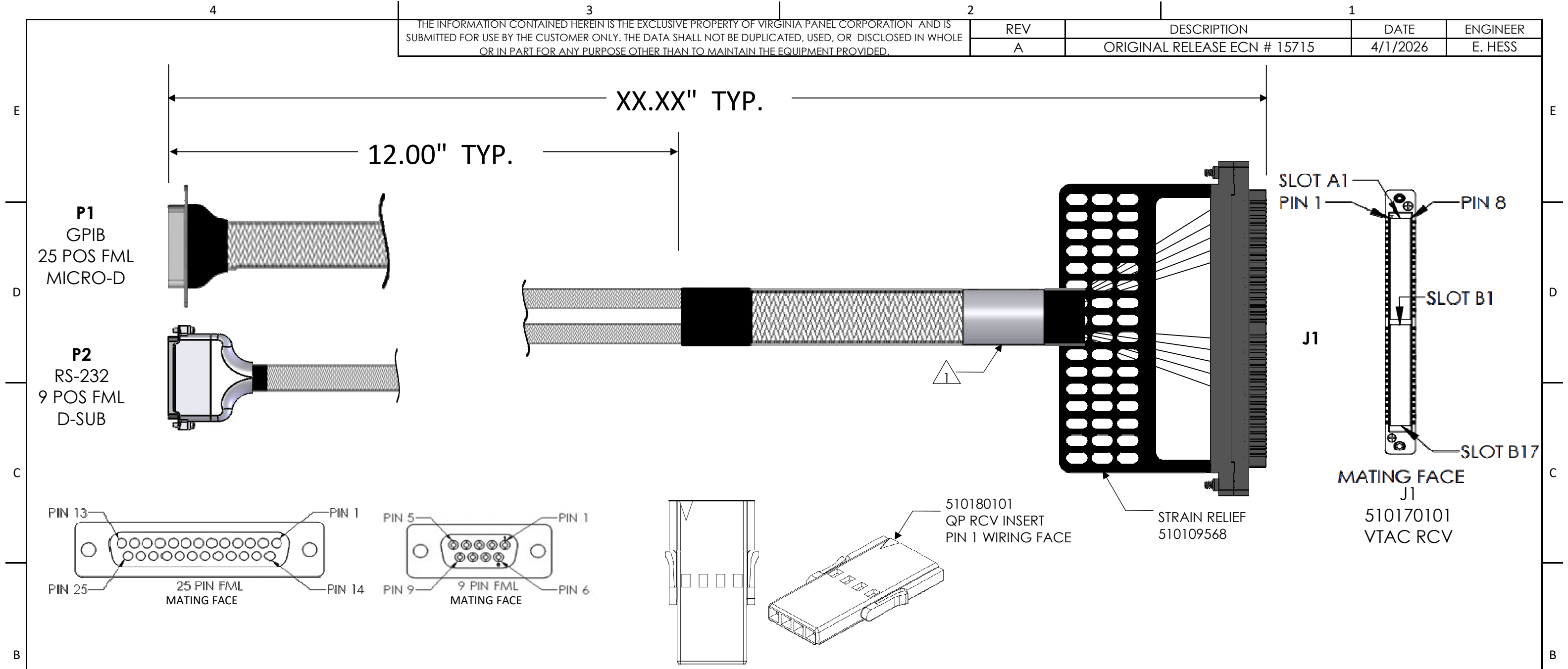


THE INFORMATION CONTAINED HEREIN IS THE EXCLUSIVE PROPERTY OF VIRGINIA PANEL CORPORATION AND IS SUBMITTED FOR USE BY THE CUSTOMER ONLY. THE DATA SHALL NOT BE DUPLICATED, USED, OR DISCLOSED IN WHOLE OR IN PART FOR ANY PURPOSE OTHER THAN TO MAINTAIN THE EQUIPMENT PROVIDED.		REV	DESCRIPTION	DATE	ENGINEER
		A	ORIGINAL RELEASE ECN # 15715	4/1/2026	E. HESS



MATING COMPONENTS		
ITEM	PART NUMBER	QTY
VTAC SIM MODULE	510171101	1
QP FLYING PATCHCORD	7-121924000-036	34
VTAC/QP INSERT	510181101	10
VTAC BLANK INSERT	610151102	24

VPC P/N	LENGTH
540365010X71	XX.XX"
WHERE X=	
1	20.00" [508]
2	36.00" [914]
6	48.00" [1219]
9	60.00" [1524]
5	72.00" [1829]

DIMENSION DESIGNATOR LABELS PER ES6 UNLESS OTHERWISE SPECIFIED.		TORQUE ALL SCREWS PER ES2 UNLESS OTHERWISE SPECIFIED.	
VPC BREAKOUT TOLERANCES UNLESS SPECIFIED REFERENCE ENGINEERING SPECIFICATION 4		DIMENSIONS ARE IN INCHES UNLESS OTHERWISE SPECIFIED.	
IF	THEN	RELATIVE CONNECTOR POSITIONS AND WIRE ROUTING ARE GENERIC AND MAY VARY WITH PINOUT	
BUNDLE SIZE IS SMALLER THAN THE CONNECTOR ENVELOPE & STRAIN RELIEF IS OFFSET	3.50 +/- 1.00	TOLERANCES UNLESS SPECIFIED	
BUNDLE SIZE IS SMALLER THAN THE CONNECTOR ENVELOPE & STRAIN RELIEF IS CENTERED	4.50 +/- 1.00	NOMINAL LENGTH	TOLERANCE
		0 - 11.99"	+1.00/-0.00
		12.00 - 59.99"	+2.00/-1.00
BUNDLE SIZE IS LARGER THAN THE CONNECTOR ENVELOPE	5.50 +/- 1.00	60.00 - 119.99"	+4.00/-1.00
		120.00 - 299.99"	+6.00/-1.00
		300.00" - UP	+5 %/- 1.00

CUSTOMER DRAWING



CBA GPIB/RS232 PXIe-8842

DWG.NO.	REV		
540365010X71	A		
SIZE	SCALE	CAGE CODE	SHEET
B	NONE	18117	1 OF 2

2. BLANK VTAC INSERTS WILL BE LOCATED IN THE FOLLOWING SLOTS: A8-A17(10), B4-B17(14).

1. FOR APPLICATION USE AND CARE INFORMATION CONSULT VPC USERS GUIDE @ WWW.VPC.COM.

NOTES:

Run #	From Location (Conn - Pin)	From Contact	VTAC Adapter	From Signal Desc	Wire AWG	Wire/Patchcord P/N	Wire Color	To Location (Conn-Pin)	To Contact	Notes
1	J1-A1-1	610138216	510180101	MICRO-D 1	26	877085	BLK	P1-1	W/CONN	
2	J1-A1-2	610138216	(510180101)	MICRO-D 2	26	↑	BRN	P1-2	↑	
3	J1-A1-3	610138216	(510180101)	MICRO-D 3	26	↑	RED	P1-3	↑	
4	J1-A1-4	610138216	(510180101)	MICRO-D 4	26	↑	ORG	P1-4	↑	
5	J1-A2-1	610138216	510180101	MICRO-D 5	26	↑	YEL	P1-5	↑	
6	J1-A2-2	610138216	(510180101)	MICRO-D 6	26	↑	GRN	P1-6	↑	
7	J1-A2-3	610138216	(510180101)	MICRO-D 7	26	↑	BLU	P1-7	↑	
8	J1-A2-4	610138216	(510180101)	MICRO-D 8	26	↑	VIO	P1-8	↑	
9	J1-A3-1	610138216	510180101	MICRO-D 9	26	↑	GRY	P1-9	↑	
10	J1-A3-2	610138216	(510180101)	MICRO-D 10	26	↑	WHT	P1-10	↑	
11	J1-A3-3	610138216	(510180101)	MICRO-D 11	26	↑	BLK	P1-11	↑	
12	J1-A3-4	610138216	(510180101)	MICRO-D 12	26	↑	BRN	P1-12	↑	
13	J1-A4-1	610138216	510180101	MICRO-D 13	26	↑	RED	P1-13	↑	
14	J1-A4-2	610138216	(510180101)	MICRO-D 14	26	↑	ORG	P1-14	↑	
15	J1-A4-3	610138216	(510180101)	MICRO-D 15	26	↑	YEL	P1-15	↑	
16	J1-A4-4	610138216	(510180101)	MICRO-D 16	26	↑	GRN	P1-16	↑	
17	J1-A5-1	610138216	510180101	MICRO-D 17	26	↑	BLU	P1-17	↑	
18	J1-A5-2	610138216	(510180101)	MICRO-D 18	26	↑	VIO	P1-18	↑	
19	J1-A5-3	610138216	(510180101)	MICRO-D 19	26	↑	GRY	P1-19	↑	
20	J1-A5-4	610138216	(510180101)	MICRO-D 20	26	↑	WHT	P1-20	↑	
21	J1-A6-1	610138216	510180101	MICRO-D 21	26	↑	BLK	P1-21	↑	
22	J1-A6-2	610138216	(510180101)	MICRO-D 22	26	↑	BRN	P1-22	↑	
23	J1-A6-3	610138216	(510180101)	MICRO-D 23	26	↑	RED	P1-23	↑	
24	J1-A6-4	610138216	(510180101)	MICRO-D 24	26	↑	ORG	P1-24	↑	
25	J1-A7-1	610138216	510180101	MICRO-D 25	26	↑	YEL	P1-25	↑	
26	J1-B1-1	610138216	510180101	DSUB 1	24	7-124924546-XXX	WHT	P2-1	960038	
27	J1-B1-2	610138216	(510180101)	DSUB 2	24	7-124924546-XXX	WHT	P2-2	960038	
28	J1-B1-3	610138216	(510180101)	DSUB 3	24	7-124924546-XXX	WHT	P2-3	960038	
29	J1-B1-4	610138216	(510180101)	DSUB 4	24	7-124924546-XXX	WHT	P2-4	960038	
30	J1-B2-1	610138216	510180101	DSUB 5	24	7-124924546-XXX	WHT	P2-5	960038	
31	J1-B2-2	610138216	(510180101)	DSUB 6	24	7-124924546-XXX	WHT	P2-6	960038	
32	J1-B2-3	610138216	(510180101)	DSUB 7	24	7-124924546-XXX	WHT	P2-7	960038	
33	J1-B2-4	610138216	(510180101)	DSUB 8	24	7-124924546-XXX	WHT	P2-8	960038	
34	J1-B3-1	610138216	510180101	DSUB 9	24	7-124924546-XXX	WHT	P2-9	960038	