



TABLE OF CONTENTS

SECTION 1 D1 PART IDENTIFICATION

SECTION 2 D1 RECEIVER AND ITA ENGAGEMENT

SECTION 3 RECEIVER MOUNTING

SECTION 4 MODULE INSTALLATION AND REMOVAL

SECTION 5 D1 ACCESSORIES

*Please note that any printed or downloaded User Manuals or Procedure Sheets may not reflect the most current revisions. The information contained in these materials is subject to change.
For the most current information available, visit www.vpc.com.*

D1 RECEIVER PART IDENTIFICATION

PART # 310 131 102

PART IDENTIFICATION

1. Locate the frame without guide pins or blue bushings. This is the receiver frame.
2. Rotate the receiver until the in-set face of the frame is visible (**Figure A**). Note the two mounting screw holes in the interior of the receiver. This is the module installation side. Any wiring will be visible from this side. Patchcords or cable sets will exit this side of the receiver.
3. Rotate the receiver until the smooth face of the frame is visible (**Figure B**). Note the mounting screw hole exits on this side. This is the mating face of the receiver when an iCon module is installed.
4. The D1 receiver is equipped with guide bushings (**Figure B**). These bushings accept the guide pins of the ITA frame.

NOTE: More information on module installation is provided in Section 4.

NOTE: The standard D1 receiver is *not* equipped with floating bushings in each corner. Floating bushings are only available on the ITA.



Figure A. D1's module installation side, indicated by the in-set face for the module.

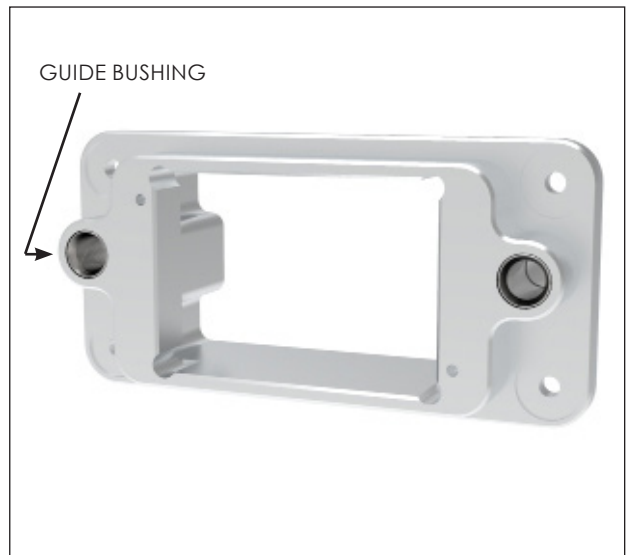


Figure B. D1's mating face, indicated by the smooth surface surrounding the module.

D1 ITA PART IDENTIFICATION

PART # 410 131 102

PART IDENTIFICATION

1. Locate the frame with guide pins.
2. Rotate the ITA until the smooth face of the frame is visible (**Figure A**). The guide pins should be visible from this view. This is the mating face of the ITA frame.
3. Rotate the ITA until the in-set face of the frame is visible. Note the mounting screw holes on the interior of the frame. This is the module installation face (**Figure B**). The iCon modules will be installed on this side.



Figure A. Mating side of the ITA.



Figure B. Module installation side for the ITA.

D1 RECEIVER AND ITA ENGAGEMENT

RECEIVER • PART # 310 131 102

ITA • PART # 410 131 102

INSTRUCTIONS

1. Align the ITA's guide pins with the receiver's guide bushings.
2. Push the ITA onto the receiver.

NOTE: When configuring the engagement settings for your test interface, be sure to leave a small gap between the ITA and receiver frame for the full-mated position. The gap will prevent continual contact of the frames upon mating. VPC recommends a maximum gap distance of 0.025" [.635 mm].

NOTE: The guide bushings are positioned off-center to prevent engagement mismatch.

NOTE: For optimum performance and system longevity, VPC recommends distributing the load evenly in all interfaces.

NOTE: To determine the maximum mating force for your configuration, VPC recommends contacting a VPC Field Application Engineer by visiting us at:

http://www.vpc.com/contact_us/sales_team/



Figure A. The ITA and Receiver Disengaged



Figure B. The ITA and Receiver Engaged

D1 RECEIVER PANEL MOUNTING

PART # 310 131 102

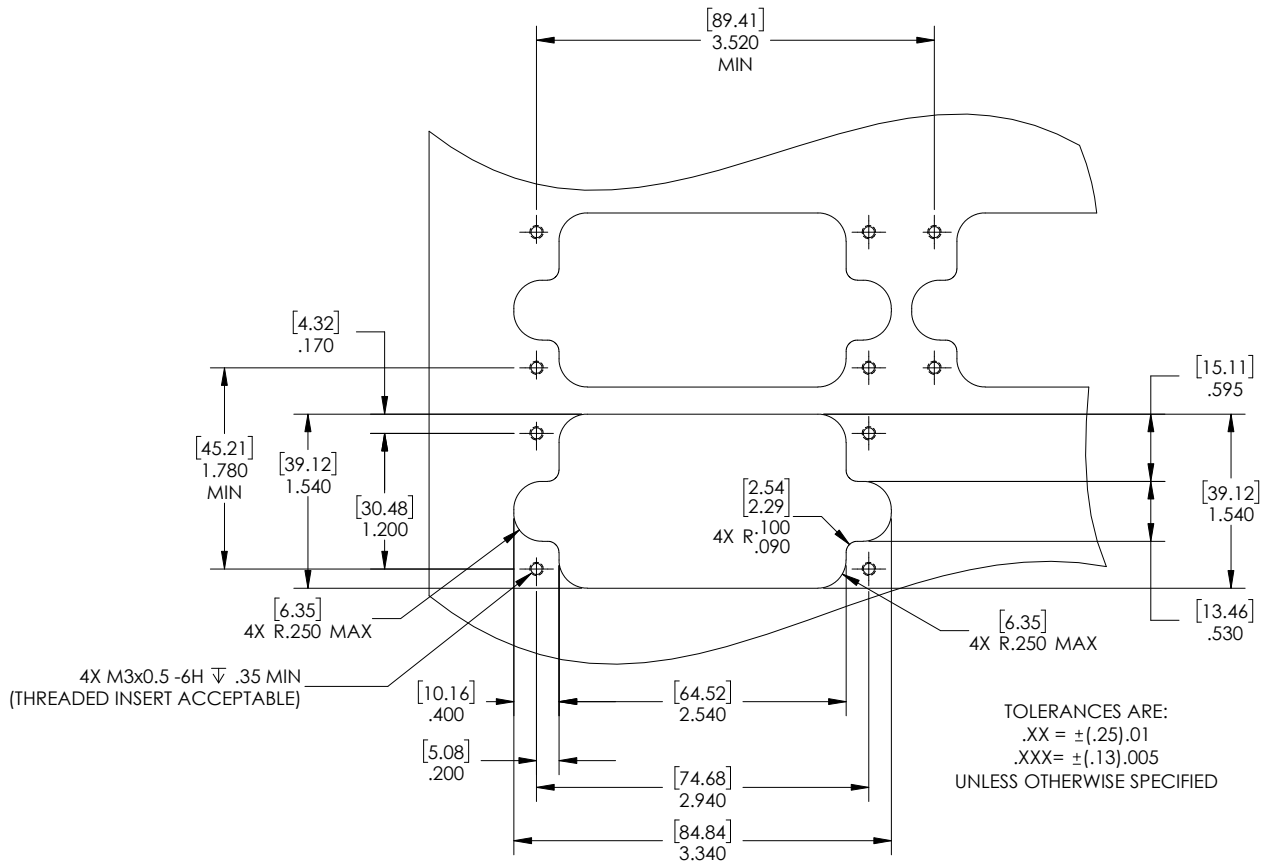
TOOLS REQUIRED

Phillips Head Screwdriver

INSTRUCTIONS

1. Prepare the mounting surface using the dimensions provided in **Figure A**.
2. Attach the D1 receiver to the panel with the provided M3 Phillips head screws.
3. Torque the screws to 6.5 in-lbs [0.73 Nm].
4. The D1 receiver frame is designed to be used in a modular configuration. As long as the minimum distances between frames are observed, multiple receiver frames can be engaged simultaneously as a single test interface. These frames can be placed adjacent to one another in horizontal or vertical configurations.

Figure A. Recommended panel cutout.



D1 RECEIVER MODULE INSTALLATION AND REMOVAL

RECEIVER • PART # 310 131 102

ITA • PART # 410 131 102

The D1 receiver is designed so the modules mount from the rear. This allows the test technician to easily mount wired cable assemblies without having to route the connectors through the receiver frame.

TOOLS REQUIRED

Phillips Head Screwdriver

MODULE INSTALLATION (iCon MODULE)

1. Locate pin 1 of the module. Each module has a specific pin 1 indicator to ensure that the module is positioned upright.
2. Place the module in the receiver or ITA until the upper and lower module screws touch the mating holes in the inner frame.
3. Using a Phillips head screwdriver, tighten the top screw while pushing lightly against the face of the module until the screw is seated.
4. Maintain this pressure while tightening the bottom screw until the screw is seated.
5. Torque both screws 1.5 in-lbs [0.16 Nm].

MODULE REMOVAL

1. To remove the module, loosen the screws using a Phillips head Screwdriver.

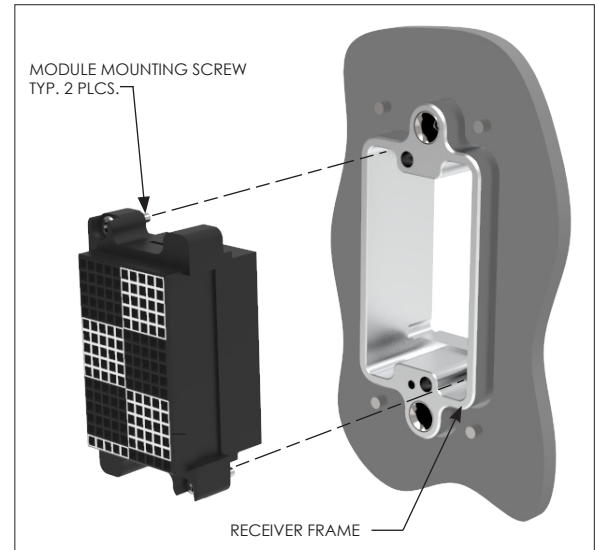


Figure A. D1 receiver and iCon receiver module.

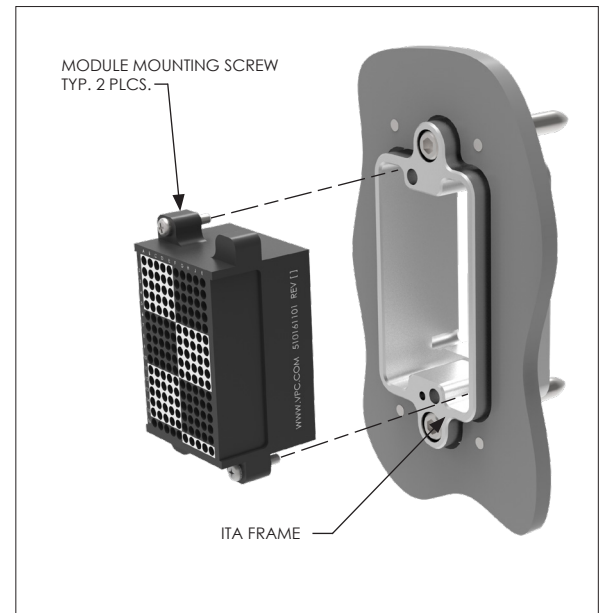


Figure B. D1 ITA and iCon ITA module.

D1 ACCESSORIES • i1 RECEIVER STRAIN RELIEF ASSEMBLY

PART # 310 113 531

TOOLS REQUIRED

Phillips Head Screwdriver

ASSEMBLY INSTRUCTIONS

1. Using the Phillips head screwdriver, fasten the strain relief to the back (wiring) side of the D1 receiver with the 2-56 screws and nuts provided (**Figure A**). Place the nuts in the keying positions from the front side of the receiver.
2. Torque screws to 2 in-lbs [0.23 Nm].

NOTE: Four wiring ties are included with the strain relief for restraining wires.

NOTE: If using 8AWG or 10AWG wire, the iCon Strain Relief Kit, Part # 310 113 582, will be required. Install patchcords into module before attaching strain relief.

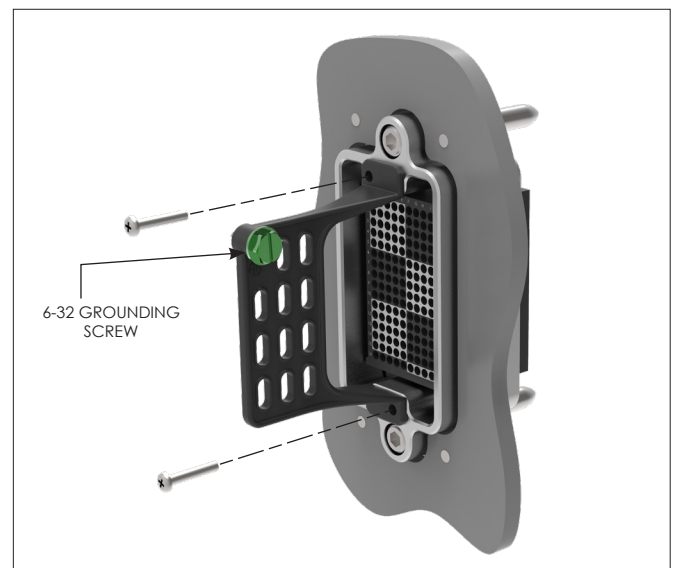


Figure A. D1 receiver strain relief.